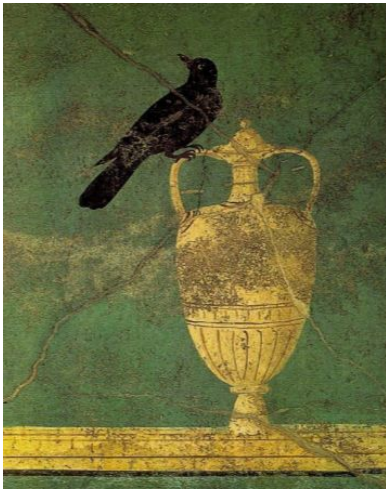


Art 204

History of Western Art: Prehistory to the Middle Ages



Fall 2016

Class Times:

CRN 20230: MWF 1-1:50

CRN 20231: TR 10-11:20

Location: NSH 106

Linn-Benton Community College

Professor: Isabelle Havet

Email: haveti@linnbenton.edu

Office: SSH 116C

Office Hours: MW 11-12; TR 1:30-2:30
& by appointment

Art 204

History of Western Art: Prehistory to the Middle Ages

Fall 2016
Class Times:
CRN 20230: MWF 1-1:50
CRN 20231: TR 10-11:20
Location: NSH 106

Professor: Isabelle Havet
E-mail: haveti@linnbenton.edu
Phone: 541-917-4559
Office: SSH 116C
Office Hours: MW 11-12,
TR 1:30-2:30 & by appt.

Course Description

This class provides an overview of the History of Art from Prehistory to the Middle Ages. Significant artworks, including painting, sculpture, architecture, and other media, will be examined within their historical, social, and cultural contexts. Students will develop an understanding and appreciation of the major periods, styles, and artworks produced by different artists and civilizations. This class is the first part of the three-part History of Western Art sequence (ART 204, 205 & 206). It is recommended, but not required, that the History of Western Art courses be taken in sequence.

Learning Outcomes

- Articulate verbally and in writing an understanding of the significance of art relative to the prehistoric and ancient cultures that produced them.
- Identify and describe verbally and in writing, specific two and three-dimensional works of art from these early societies, using appropriate art vocabulary.
- Articulate verbally and in writing the form and content of specific and significant works of art from the ancient cultures that produced them.

Credits: 3 credits; 3 hours of class per week.

General Education Requirements: AS Literature & the Arts, AS Western Culture, AAS Human Relations, AS Liberal Arts Core 2, Cultural Literacy AAOT/AAS, AAOT Arts & Letters, AGS Humanities/Arts.

Prerequisites: None.

Recommended (but not required): College-level reading and writing skills.

Required Textbook: Fred S. Kleiner, *Gardner's Art through the Ages: A Global History*, Volume I. Cengage Learning, 15th edition. ISBN-10: 1285837843; ISBN-13: 978-1285837840.

Course Assignments:

- ❖ Weekly Readings & Videos
- ❖ Weekly Quizzes
- ❖ In-Class Discussions
- ❖ Group Presentation
- ❖ Response Papers
- ❖ Final Paper

Description of Course Assignments:

❖ **Readings & Videos**

You are required to read the assigned textbook chapters and watch the assigned videos posted in Moodle for each week. Please come to class having completed all assigned readings and videos. The textbook reading will sometimes be substantial, so it is best to stick to the reading schedule so that you do not fall behind. If you would like tips on successfully completing the assigned readings and/or taking notes, please contact the instructor.

❖ **Weekly Quizzes (10)**

Weekly Quizzes are designed to help students keep pace with the material and absorb class content. They cover information from lectures, readings, and videos for that week. All quizzes are taken in Moodle and must be completed by Friday at 11:59pm of that week. Quizzes may be taken twice, and the system will save the highest score of the two attempts.

❖ **Discussions (3)**

In-class discussions requiring work with other students are designed to promote student interaction in the course. These are a fun way to get to know your fellow students and collaborate with them. You will also be able to explore different topics in the course that might interest you. Your thoughts and observations, and the materials that you will bring to Discussions, will greatly enrich the class for all.

❖ **Response Papers (3)**

Students will write short (2-page) response papers focused on the formal analysis of artworks. Short Response Papers are meant to sharpen students' abilities to critically analyze artworks within their social and historical contexts. They are also meant to provide practice in honing the style of writing and methods of art historical analysis required for the Final Paper, which will be due towards the end of the term. Responses must be written in essay format (they must be written in paragraph form and with complete sentences, and be largely free of grammatical or spelling errors).

❖ **Final Paper (1)**

Students will complete a 3-page Final Paper. The topic and detailed instructions will be given well in advance of the due date. Final Papers must demonstrate college-level writing skills. Written work may NOT contain word-by-word text that you have copied from your readings, a website, or another source, and must cite any sources appropriately. **Due date: Friday, December 2, 2016 at 11:59pm on Moodle.** Late papers will be accepted, however they will be downgraded 10% of the paper grade per day (including weekends).

❖ **Group Presentation (1)**

Students will work in groups on a presentation project based on a select course topic (to be determined). Instruction will be given well in advance of the due date. Presentations will be 10 minutes in length and will be given during finals, in lieu of a final exam.

Failure to submit work or participate in class activities will result in a 0 for that assignment.

Grading:

Assignment	Number of Assignments	Points Each	Total Points
Syllabus quiz	1	1	1
Weekly Quizzes	10	3	30
Discussions	3	5	15
Q&A Assignments	3	5	15
Group Presentation	1	14	14
Final Paper	1	25	25
Total Points			100

Grading Scale

A 93-100; A- 90-92; B+ 87-89; B 83-86; B- 80-82; C+ 77-79; C 73-76; C- 70-72; D+ 67-69; D 63-66; D- 60-62; F Any score below 60

Course Policies

Moodle

This course uses the Moodle learning platform. Think of Moodle as the class hub: you will have access to important announcements, the syllabus and class schedule, instructions for assignments, as well as lecture PowerPoints, assigned videos, readings, and other resources. **You will use Moodle to turn in all of your written work, including Quizzes, Response Papers, and your Final Paper.** You will also be able to interact with the class outside of classroom hours. I make frequent class

announcements through Moodle, so be sure to check into Moodle or check your email frequently (preferably daily). Consult the class schedule for assignment due dates. **All written assignments must be uploaded in Moodle on Friday at 11:59 pm on the week they are due (See Course Schedule for details).**

Moodle Support

For questions about using Moodle or for technical support, visit:

- ❖ **The Student Help Desk** (located in the Library): Either visit, call at 541.917.4630, or email at student.helpdesk@linnbenton.edu
- ❖ **LBCC Moodle User Support Forum**: You can look up other people's Moodle questions, or post your own on the forum:
<http://elearning.linnbenton.edu/mod/forum/view.php?id=2697>

Communication

The best way to reach me is via email, during office hours, or before or after class. I try to respond to email messages daily during weekdays. I will send out announcements, due date reminders, and important messages to your LBCC email through Moodle, and you are responsible for reading that information on time. Make sure to either check your LBCC email frequently, or forward your LBCC emails to your personal email.

Attendance & Participation

- ❖ **How important is regular attendance?**
Very. Attendance and participation are required, and are essential for student success in this class. **Attendance is taken each class period.** Because the term is only 10 weeks long and we have so few class sessions, missing classes will put students behind, and generally means they are not getting what they need out of the class.
- ❖ **What if I miss a class?**
If you cannot attend a class, get notes from a fellow student and look over the lecture PowerPoint (it will not make much sense without notes), and stop by the instructor's office hours to figure out what you need to do to catch up. If something is impacting your ability to attend class regularly, contact the instructor *as soon as possible*.
- ❖ **What is the class attendance policy?**
You are allowed **two (2) unexcused absences**. Additional absences will negatively impact your grade and may result in failure of the class. Lectures and class activities include a lot of information and ideas that are not in the readings or lecture PowerPoints.
- ❖ **Are extensions or makeup work ever offered?**
Extensions and makeup work are granted only in exceptional circumstances.

I will, of course, work with students who have true emergencies (i.e., military duty, medical emergency, death in the family). Please let me know *as soon as possible* (and well before a deadline!) if you need to negotiate an alternate due date for one of these reasons. Documentation will be required.

❖ **What if I have an issue related to the class, but I'm not sure if it's worth bringing up to the instructor?**

When in doubt, just contact the instructor. Email, visit office hours, or see the instructor before or after class.

❖ **What do I need to do to be successful in this class?**

- **Attend class regularly**
- **Take notes during class and of assigned readings/videos**
- **Actively participate in discussions and activities**

Note-taking is an important college skill that is developed through practice. For tips on successful note-taking, please contact the instructor. Students who do not actively **attend and participate in class** on a regular basis (by actively listening and engaging in discussions/activities) are unlikely to earn a passing grade. The goal of participation is not always to have the “right” ideas or answers. Rather, it is important to try your best, stretch yourself, build on your skills and knowledge throughout the term, and for us to learn together as a class.

Grace Period Policy for this Course

All written assignments (except for in-class assignments) must be uploaded to Moodle. Please be aware in planning your work that Moodle automatically counts as late any assignment that is submitted even 1 minute past the deadline. Do not wait until the last minute to turn in assignments! That being said, I understand that sometimes, even with our best efforts, things can go wrong. Therefore, I am instituting a grace period policy for the course.



I will accept, with no questions asked, three (3) late assignments, as long as they are turned in within 48 hours of the original due date. This policy does NOT extend to in-class assignments such as discussions and group projects, since students count on each other to contribute in a timely manner.

Items that may be turned in late and qualify for the Grace Period: the Final Paper, Response Papers, and Quizzes. **If you have used up your three (3) grace period allotments, you will NOT receive any other extensions or make-ups (barring a documented emergency). Therefore, use your grace period allotments very sparingly (if at all) during the term.**

Extra Credit!

- ❖ **Writing Center:** You can receive two (2) extra credit points for using the Writing Center for your class Paper. You may upload the evidence on Moodle with your paper.

- Writing Center website: <https://www.linnbenton.edu/writing-center>
- There are 3 ways to use the Writing Center: by scheduling a 30-minute appointment, by using Drop-In Services, or by using OWL (the Online Writing Lab). **These services are highly recommended!**

- ❖ **Attend a campus/local lecture or exhibition:** During the term, I will announce campus/local lectures and exhibition events that are of interest to the class. You can receive two (2) extra credit points for each event you attend by turning in a 1-2 page reflection paper after the event. In your reflection paper, you may discuss any aspect of the lecture or exhibition that struck you or that you feel ties into issues we've explored in the class, as long as you include some specific details that show that you attended the event in person.

Important Academic Calendar Dates & Policies

- ❖ Last day to add/drop the class: **October 3, 2016.**
- ❖ Last day to withdraw from the class: **November 14, 2016**

Incomplete Grade Policy

Incompletes are rarely granted. They are granted solely at the discretion of the instructor, and only in extraordinary and documented circumstances (i.e., a family emergency or serious medical excuse). You must have regular attendance and have completed most of the assignments. If an Incomplete is granted, the instructor will provide instructions for turning in incomplete work and give a completion deadline for turning in all missing work. This deadline will be nonnegotiable. If the incomplete work is not turned in on time or is deemed unsatisfactory by the instructor, the Incomplete will revert to an F-grade.

Academic Honesty

Academic honesty is an indispensable value as students acquire knowledge and develop skills in college. Students are expected to practice academic honesty by not cheating, plagiarizing, or misrepresenting their coursework in any way. Students are ultimately responsible for understanding and avoiding academic dishonesty whether such incidences are intentional or unintentional. Violations may result in failure of an assignment or of the course. Plagiarism, collusion, and other forms of misrepresentation hurt the student and run counter to the goals of education.

Accessibility

Students who may need accommodations due to documented disabilities, or who have medical information which the instructor should know, or who need special arrangements in an emergency, should speak with the instructor during the first week of class. If you think you may need accommodation services, please contact Center for Accessibility Resources, 541-917-4789. Location: Red Cedar Hall, Room 105. Email: <https://linnbenton.edu/cfar>

Course Schedule (Subject to change)

Week	Dates	Topic	Readings & Resources	Activities & Assignments
All written assignments due in Moodle on Friday at 11:59 pm of listed week				
1	Sep 26-30	Course Introduction	Review Syllabus & Class Schedule Read Gardner, Introduction pp.2-13 (begin with “Art History in the 21 st Century”)	Syllabus Quiz (due in Moodle) Quiz 1 (Moodle)
		Art Before History: Paleolithic & Neolithic Art	Chapter 1: Art in the Stone Age pp. 14-29	
2	Oct 3-9	Ancient Mesopotamia & Persia	Chapter 2: Ancient Mesopotamia & Persia pp. 30-53	Quiz 2 (Moodle)
	M, Oct 3	LBCC Academic Calendar: Last day to add/drop		
3	Oct 10-16	Ancient Egypt	Chapter 3: Egypt 54-81	Library Workshop 1 (in class) Quiz 3 (Moodle)
4	Oct 17-23	Ancient Egypt Aegean Art: Cycladic, Minoan & Mycenaean Art	Chapter 4: The Prehistoric Aegean pp. 82-101	Discussion 1 (in class) Quiz 4 (Moodle)
5	Oct 24-30	Ancient Greece: Archaic Art, Early & High Classical Art	Chapter 5: Ancient Greece pp. 102-42	Library Workshop 2 (in class) Response Paper 1 (Moodle) Quiz 5 (Moodle)
6	Oct 31-Nov 6	Ancient Greece: Late Classical & Hellenistic Art	Chapter 5: Ancient Greece pp. 142-61	Quiz 6 (Moodle) Discussion 2 (in class)
7	Nov 7-13	Ancient Romans: Monarchy & the Republic; Pompeii	Chapter 7: The Roman Empire pp. 176-95	Library Workshop 3 (in class) Response Paper 2 (Moodle) Quiz 7 (Moodle)
	Th Nov 10	Academic Calendar: Last day to withdraw		

	Fr Nov 11	Academic Calendar: College Closed, Veteran's Day		
8	Nov 14-20	Ancient Romans: Early, High & Late Empire	Chapter 7: The Roman Empire pp. 195-229	Quiz 8 (Moodle)
9	Nov 21-27	Late Antiquity Byzantium	Chapter 8: Late Antiquity, Skim pp. 240-55 (start from "The First Churches;" review "The Life of Jesus in Art" pp. 240-41); Chapter 9: Byzantium pp. 256-83	Response Paper 3 (Moodle) Discussion 3 (in class) Quiz 9 (Moodle)
	Nov 24-27	Academic Calendar: College Closed, Thanksgiving		
10	Nov 28-Dec 4	The Middle Ages: Early Medieval Europe	Chapter 11: Early Medieval Europe pp. 310-37	Quiz 10 (Moodle) Final Paper (Moodle)
		The Middle Ages: Romanesque Europe	Chapter 12: Romanesque Europe pp. 338-53	
		The Middle Ages: Gothic Europe & Late Medieval Italy	Chapter 13: Gothic Europe pp. 372-390; Skim Chapter 14: Late Medieval Italy pp. 410-33	
11	Dec 5-9	Finals Week		
	Tu Dec 6, 9:30-11:20am (CRN 20231) Wed, Dec 7, 1-2:50 pm (CRN 20230)	Wrap-Up (We will meet during our scheduled final exam time slot)		Group Presentations (in class)

