

COMMUTER

VOL. 49 EDITION 16



FEB. 7, 2018



HOMELESS NOT HOPELESS

Former homeless student shares his story

PHOTO: ANGELA SCOTT

Michael Beck, a current LBCC student, has found a home for the first time since late fall 2016.

After over a year without a place to go, balancing both the anxieties of homelessness and college, Michael Beck finally returns home.

Beck, 66, a disabled veteran and former homeless student at LB, is currently looking to finish out an Associate Degree in Computer Aided Design and Drafting.

After 20 years of service, Beck left the Air Force in 1992 and lived in Buffalo, New York, until August 2016, when he decided it was time to come home to Oregon. Staying at his sister's home in Jefferson didn't work out, so he hopped on his bike and rode down to Albany and began staying at a KOA campsite in October of 2016. As the winter season approached, Beck moved into a Community Outreach Inc. (COI) Shelter in Corvallis to stay out of the cold.

"I ended up in Corvallis in November and then basically ran out of money and places to go," said Beck.

Beck, who has a 30 percent service disability, was able to get into a bulk rehab program called Chapter 31. The program provides assistance to eligible veterans and service members with service-connected disabilities in finding suitable employment.

"The purpose is to give individuals an opportunity to gain some skills. They pay for my tuition, buy some books, school supplies, everything. They also provided me with a computer and a printer, headphones, things like that. They pay me a subsistence allowance to go to school," said Beck.

Beck also says he has received good support from shelters, but the biggest issue he has faced as a student in the shelters was getting time to study. Not only did Beck have to be back at COI before 9 p.m., he wasn't allowed to use his computer in the facility because of its recording capabilities.

"If I could do any study time without the use of my computer I did. I was given some opportunities to do that, but I was still limited," said Beck.

"As long as I am in the building, I cannot use my computer. I have to wait until I'm outside. It created challenges with writing classes: you have to type it all up. Math classes [are] also challenging. With the introduction of ALEKS for the math classes, it's all online."

Beck utilized several different outlets to gain internet access, such as The Valley Library and Memorial Union at OSU, as well as the Corvallis Public Library. He also moved into the men's homeless shelter in south Corvallis in November 2017, where they were more flexible with internet access. However, due to the high volume of people in the shelter and the amount of

noise, the Corvallis shelter became a difficult place to study as well.

"There are a lot of different challenges, a lot of different things that I have to deal with that I wouldn't have to deal with if I lived at my own place. A lot of those things would be taken out of the equation and I could study when I want to, not having to say, 'Okay I have to study between this hour and this hour,'" said Beck.

STORY CONTINUED ON PAGE 4



One of Beck's drawings depicting a mountainous landscape with him yelling atop a mountain.

THE LINN-BENTON
COMMUNITY COLLEGE

The Commuter is the weekly student-run newspaper for LBCC, financed by student fees and advertising. Opinions expressed in The Commuter do not necessarily reflect those of the LBCC administration, faculty and students of LBCC. Editorials, columns, letters, and cartoons reflect the opinions of the authors.

LBCC is an equal opportunity educator and employer.

Letters Welcome

The Commuter encourages readers to use its "Opinion" pages to express their views on campus, community, regional and national issues. The Commuter attempts to print all submissions received, but reserves the right to edit for grammar, length, libel, privacy concerns and taste. Opinions expressed by letter submitters do not represent the views of the Commuter staff or the College. Deliver letters to:

Address:

The Commuter Office
Forum 222
6500 SW Pacific Blvd.
Albany, Oregon 97321

Web Address:

commuter.linnbenton.edu

Phone:

541-917-4451, 4452 or 4449

Email:

mmuter@linnbenton.edu

Twitter

@LBCommuter

Facebook

The Commuter

Google+

LBCC Commuter

Our Staff

Adviser

Rob Prieue

Editor-in-Chief

Katelyn Boring

Layout Designer

Rebecca Fewless

Managing Editor

Josh Stickrod

A&E

Steven Pryor

Photography

Angela Scott - Editor

Cuahtemoc Reilly

Steve Olson

Sarah Melcher

Web Master

Marci Sischo

Advertising

Vicki Ballestero

Contributors

Jeremy Durand

Josh Knight

Constance Jones

Cuahtemoc Reilly

Sarah Melcher

Becky Howell

Alex Gaub

Lisa Hoogesteger

Ravenshire

Samantha Guy

WB @ LB

I asked, students answered. What is your best tip for well-being as a student? Thinking about all aspects of well-being (physical health, mental health, social support, connection to community, career goals/purpose, financial well-being) what advice would you give to a new LBCC student?

"Ask for help if you need it. Whether that be raising your hand in class, tutoring, counseling or going to CFAR if you need extra assistance. Sometimes we need help and that's okay"

"Only put off until tomorrow what you are willing to die having left undone -Pablo Picasso. Laziness is great, but get everything done that you can in the time you have"

"Think about your health first before school. You can't focus if you're sick or stressed."

"Don't take out loans if you absolutely don't need to. Find work study or other on campus jobs that you can do in between classes. Utilize the writing center and other free tutoring options.

Find community through clubs."

I couldn't have said it better myself. Thank you to the students who shared their insights. Here is some additional information about the resources mentioned:

CFAR (Center for Accessibility Resources): CFAR provides assistance to students who have documented disabilities by reviewing documentation, planning reasonable accommodations, coordinating services in the classroom and providing support. For more information and to apply for accommodations online visit www.linnbenton.edu/cfar

Tutoring Center: Free tutoring is available to LBCC students taking credit courses. Learn more about the program guidelines and make an appointment online at www.linnbenton.edu/tutoring-center

Learning Center: Tutoring is a part of the larger Learning Center, which includes math and writing support and help with college learning strategies.

Stop by the second floor of Willamette Hall on Albany campus or visit www.linnbenton.edu/learning-center

Counseling: Limited personal counseling is available through the Advising Center, as well as referral to community resources. Call 541-917-4780 or stop by the Advising Center in Takena Hall 101 to schedule an appointment.

Financial Aid: Financial Aid has extensive information available on their website to help you learn more about debt management and different types of aid, including work study. Financial aid advisor drop-in hours are also available. Check out their website to learn more at www.linnbenton.edu/financial-aid

Clubs and Campus Involvement: A wide range of clubs, co-curriculars, and other involvement experiences are available at LBCC. Check out <https://www.linnbenton.edu/current-students/involvement>

COURTESY OF: LISA HOOGESTEGER

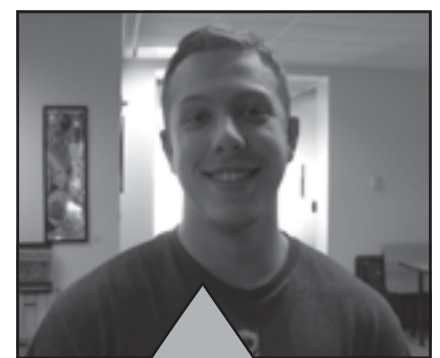
CAMPUS VOICE

What is the biggest mistake you've made while cooking?



WALDO FRENCH FOREIGN LANGUAGE

"I USED A CUP OF SALT ONCE INSTEAD OF SUGAR."

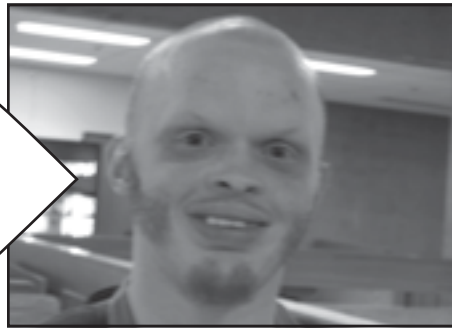


ELIJAH WILLIS MUSIC

"ONE TIME I WAS MAKING SOME CHICKEN NUGGETS, AND I MADE THEM PERFECTLY BUT I FORGOT TO TURN THEM OFF... I WOKE UP AT 3AM TO GET SOME WATER, AND I WAS LIKE 'OH I SHOULD TURN THAT OFF,' SO I DID."

MITCHELL BUTZNER UNDECIDED

"THERE WAS A RECENT ONE THAT WAS PRETTY BAD; I USED TWICE THE AMOUNT OF BUTTER YOU WERE SUPPOSED TO AND IT BURNT ON THE BOTTOM OF THE PAN AND I HAVEN'T BEEN ABLE TO GET IT OFF SINCE, WHICH IS PRETTY FRUSTRATING."



SETH BERG BUSINESS MARKETING

"NOT LEARNING HOW TO COOK."



ASHLEY CASTENEDA NATURAL RESOURCES

"I USED BAKING POWDER INSTEAD OF BAKING SODA ONE TIME."



STORY AND PHOTOS: CUAHTEMOC REILLY

ARTISTS, MENTORS TEAM UP

When you look at “Tideway,” a painting hanging on the second floor of the NSH Gallery, you’ll see an illusion of texture. Deep teal gives the impression of water rushing down it.

“What I really like about it is it really captures the symmetry and rawness of nature,” said LBCC student Trever Brice.

Brice was one of a myriad of students who attended the reception at 1 p.m. on Wednesday, Jan. 31, on the second floor of NSH. A table of light refreshments was set up in front of the balcony in the main walkway. People were gathering to listen to artist mentors and mentees during this reception for the “Esteem: Artists and Mentors” gallery.

This gallery covers both floors of NSH and features a range of art mediums from abstract animation and ceramics, handmade books, paintings, and more. Each submission is a pair of artworks, one from a mentor and one from their mentee. Each mentor also had a short dialogue on display next to their arts. Artists all over Oregon were written to and invited to have their pieces on display for the gallery. Some pieces were even mailed in.

At 1:22 p.m. LBCC student gallery advisor Anne Magratten introduced the gallery and invited the artists to say a few words. The crowd listened attentively as the four artists; Craig Hickman, Geogiana Nehl, Jan Shield, and Ying Tan; in attendance spoke.

Nehl spoke affectionately about her mentee, Linnea Solveig. “Her work really amazes me. She is such a storyteller,” said Nehl. “It was a delight to be able to be in a show with her.”

Nehl and Solveig submitted a pair of paintings for the



Richard Roland’s ceramic piece, “Hallow Tree-Pö (Flight-Realm of the Gods Anagama Fired),” is displayed at the entrance of North Santiam Hall.

ADDITIONAL INFORMATION

North Santiam Hall Gallery
 NSH Building
 artgallery@linnbenton.edu

gallery. Nehl’s painting is an abstract view of a plate and silverware, inside of a geometrically painted frame. It is titled “House of Pratyahara.” Solveig’s is a somewhat abstract and more brightly colored painting of human figures pieced together with different body parts, titled “Family tree.”

Shield was a mentor to Richard Roland. Both are ceramic artists.

Roland was a philosopher before becoming an artist. The pair have also spent time studying fine arts together in Tasmania, Australia, and, more locally, in Roland’s studio.

Hickman introduced Tan, saying how he just always admired her work and design. Tan does abstract animation and does photography. Tan has an animation on display on a television. Next to it, Hickman has a photo on display of the side of a building that focuses on its geometric shapes with playful imagery across it.

STORY AND PHOTO BY **SARAH MELCHER**



Did you know?

Every year more than 2,500 left-handed people are killed from using right-handed products.

Inaugural
Black History Month
Essay Contest



Contest open to students to examine a piece of African American Literature and express their understanding of the value of “witnessing.”

For details:

robin.havenick@linnbenton.edu
mcgheer@linnbenton.edu

Cash prizes awarded, with opportunity to read at the Unity Celebration Feb. 28.

CJ's Lingerie *Lingerie from Classy to Sassy*

2221 Santiam Hwy SE
 Albany, OR 97322

(541) 220-4740
www.cjslingerie.com

Lingerie, Bras, Panties, Garters, Mens Underwear
 Hosiery, Boudoir Sets sizes 32B-44H

Bring in this ad for 5% off your purchase

Black History Month Events

Diversity Achievement Center, F-220 Albany Campus

Movie: “13th”
 Wednesday, Feb. 7
 Noon-1:30 p.m.
Movie focuses on the history of the “Prison to Pine” line system particularly among African American boys and men in the U.S.

“Get Out”
Movie Discussion
 Wednesday, Feb. 14
 Noon-2 p.m.
Join the discussion as we explore certain aspects of the movie in real time of covert and overt racism.

The Beauty of My Black Hair
 Wednesday, Feb. 21
 1-3 p.m.
Join us for a panel discussion and workshop on Black Hair.

Request for Special Needs or Accommodations: Direct questions about or requests for special needs or accommodations to the LBCC Disability Coordinator, RCH-105, 6500 Pacific Blvd. SW, Albany, Oregon 97321. Phone 541-917-4789 or via Oregon Telecommunications Relay TTD at 1-800-735-2960 or 1-800-735-1232. Make sign language interpreting or real-time transcribing requests 2-4 weeks in advance. Make all other requests at least 72 hours prior to the event. LBCC will make every effort to honor requests. LBCC is an equal opportunity educator and employer.

LBCC Comprehensive Statement of Nondiscrimination: LBCC prohibits unlawful discrimination based on race, color, religion, ethnicity, use of native language, national origin, sex, sexual orientation, gender, gender identity, marital status, disability, veteran status, age, or any other status protected under applicable federal, state, or local laws. For further information see Board Policy P1015 in our Board Policies and Administrative Rules, Title II, IX, & Section 504; Scott Roles, CC-108, 541-917-4425; Lynne Cox, T-107B, 541-917-4806, LBCC, Albany, Oregon. To report: linnbenton-advocate@simplicity.com/public_report



CONTINUED FROM PAGE 1

Beck also listed some of the resources for homeless students that he would like to see implemented at LBCC.

"Someplace to go to study during the winter months, someplace warm besides your car, and wifi accessibility. These little things would make just a slight bit of difference and make it just a little bit easier for students to excel and to accomplish the goal that they are trying to do," said Beck.

LBCC's Vice President for Student Affairs Bruce Clemetsen acknowledged the difficulties homeless students are presented with and says that the college has to do more to help.

"It does create a problem when you can only access online and a computer for a certain period of time. If somebody is receiving financial aid, lets try to build that into their budget," said Clemetsen.

"What we want to try to do is try to learn how to connect people to resources. Since we don't have housing, we need to work through to get a stable place to study that's warm. Finding food, so the lunchbox that we have has helped a little bit, but we need to do more to help."

Clemetsen talked about the new scholarship database at LBCC and encourages students who are having difficulties to utilize it as a resource.

"We really want to encourage people to use the scholarship system with the foundation. It's new so it really tries to line you up with the scholarships you are eligible for based on your profile and push that to you," said Clemetsen.

"I guess we're at a point where we are trying to develop some tighter resources and some experts on campus that could actually help students line up some of those resources. That way we don't have students

wondering about who to talk to and what to do, or that kind of thing."

Clemetsen added that the college has much more room to learn about homelessness and wants to encourage students who are facing these difficulties to come forward and find help when they need it.

"We don't know who's homeless and who's not, and we're going to present a better, more open environment to that. I mean, we've had some staff experience homelessness, so it's not an unknown experience for some people. That's why they really want us to step forward," said Clemetsen.

"We have a lot to learn, we've learned some over time, and we have an affordability task force. One of the things they're trying to figure out is what do we not know? What do we need to know? How do we start getting some support for students?"

Beck was recently featured in a Corvallis Gazette-Times article back in December titled "Homeless for the Holidays," which detailed the struggles that homeless people face in the Corvallis men's homeless shelter during the holiday season. While Beck is appreciative of the article bringing attention to the issue, he wanted to express that homelessness is not limited to the holidays: it is a year-round struggle.

"Someone will glance at that article and see the difficulties homeless have during the holidays, but homeless is homeless. It's all year long," said Beck.

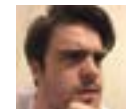
After checking Craigslist every two to three days since the beginning of December, Beck was finally able to move into his own room on Feb. 1.

"For the first time since October 2016 I was able to say, 'I am going home.' Being such an emotional person it chokes me up and brings tears of joy to my eyes," said Beck.

Beck hopes his story will help more students struggling with the same issue come forward and look for help. He also wants to encourage students to stay patient and never give up.

"I'm not the only one out there, there's other students in this school and there are individuals sleeping in their cars because they have nothing," said Beck.

"I want to Bring up the level of awareness to let people know that it's not just me. It's me plus hundreds that are struggling with the same thing."



STORY BY
JOSHUA STICKROD
@STICKRODJOSH

"For the first time since October 2016 I was able to say 'I am going home.' Being such an emotional person it chokes me up and brings tears of joy to my eyes."

- Michael Beck



PHOTOS: ANGELA SCOTT

Beck demonstrates his own artwork, used to decorate his new room. He held onto his artwork throughout his journey, keeping it safe until now.



Members of the LBCC Veterans club spend their Saturday afternoon helping out around the Veterans Farm, on LBCC's Albany Campus, January 27.

SOWING THE SEEDS

Student veterans come together to create a long-term agriculture project on LBCC's Albany Campus.

On a windy and wet Saturday, a group of veterans were putting finishing touches on a greenhouse near Luckiamute Center. A project since early November, on this cold day the work was being fueled by hot coffee and warm conversations.

The potluck held on Saturday, Jan. 27 at the LBCC and OSU Student Veterans Farm, located on LBCC's Albany Campus, was a way for veterans involved in the Veterans Club to come together and work on a common project. It was also good place to get a bite to eat and share stories with other veterans.

The Veterans Farm was the brainchild of Lisa Akers, 35, an OSU graduate of Earth Science. After getting out of the Navy in 2002, she worked on a farm, where she found a sense of pride and belonging.

"When I got out, there weren't any veterans going to school, so working on a farm brought me back," said Akers.

As a graduate of Oregon State University, Akers first intended to put together the Veterans Farm on the OSU campus. The process turned out to come with a long wait time, so, after some planning, she was able to get the project approved at LBCC.

Since Nov. 3, the farm has been moving steadily forward. With a lot of help from donations, Akers' vision is finally coming to fruition. Home Depot was able to donate a greenhouse, also organizing a volunteer work group to come out to the farm and put it together. In the coming weeks, Akers is expecting the donation of a gazebo.

Akers wants the farm to be a place for veterans to come learn and work, but also a place for them to seek peace and comfort in the presence of others.

"It's a good place for veterans to still have



PHOTOS: STEVE OLSON

Lisa Akers, OSU and LBCC Veterans Farm founder, transfers soil to trays that will be put in the greenhouse.

camaraderie" said Jacob Tudor, a veteran of the Navy.

Although veterans currently working on the project most likely won't get to see the fruits of their labor, Sean Olson, an Army veteran and LBCC graduate, believes it's more important to focus on the incoming student veteran population.

"We won't be able to use this stuff, because we will go on to other things, but imagine a new student coming in and having this all put together. That's what we want to do, we want to make it easy" said Olson.

Apart from the farm offering veterans a place to get together, it will soon be home to a variety of crops.

Akers' plans on growing a number of vegetables, and micro vegetables, which are harvested while they are still growing.

Akers vision includes participants seeing their food before it has hit the plate.

"It's important for people to not lose sight of where their food comes from," said Travis Ely, a veteran of the Coast Guard.

Akers is planning to start a weekly meeting to include LBCC students who are not veterans, in hopes this will help all students find common ground.

"Anyone willing to put in the work is welcome here," said Olson.

STORY BY ALEX GAUB

Need it Clean?
Call the Queen!
Queen Bee Cleaning Services LLC
 The Willamette Valley's Premier Residential & Commercial Cleaning Service

- Affordable flat-rate packages for all your cleaning needs, including:
 - Residential Housekeeping Services
 - Commercial and Restaurant Cleaning
 - Property Mgmt & Real Estate Cleaning
 - Debris Removal & Clean Up
 - Tenant Moving In/Moving Out

It's Not Clean Unless... It's QUEEN BEE Clean!

Call Today for a No-Cost, No-Obligation Quote!
541-936-9949

Midterm Study Jam
Hacks to ace your next midterm!*

Location: Albany Learning Center
 Time: 8-10 A.M. & 4-6 P.M.
 Date: Friday 9th February 2018
 Tips from people who've done it*
 Co-sponsored by the SLC

Hack - noun. a clever technique that solves a meaningful problem

snacks and beverages provided. Math, physics and essay test pop-up Test

Energy Bill Assistance

Do you need help paying your energy bill?

Community Services Consortium will be on LBCC Albany Campus to provide information and services for energy assistance. Please call 541-936-7163, or stop by the LBCC Student Life & Leadership office Forum 120 to sign up for an appointment.

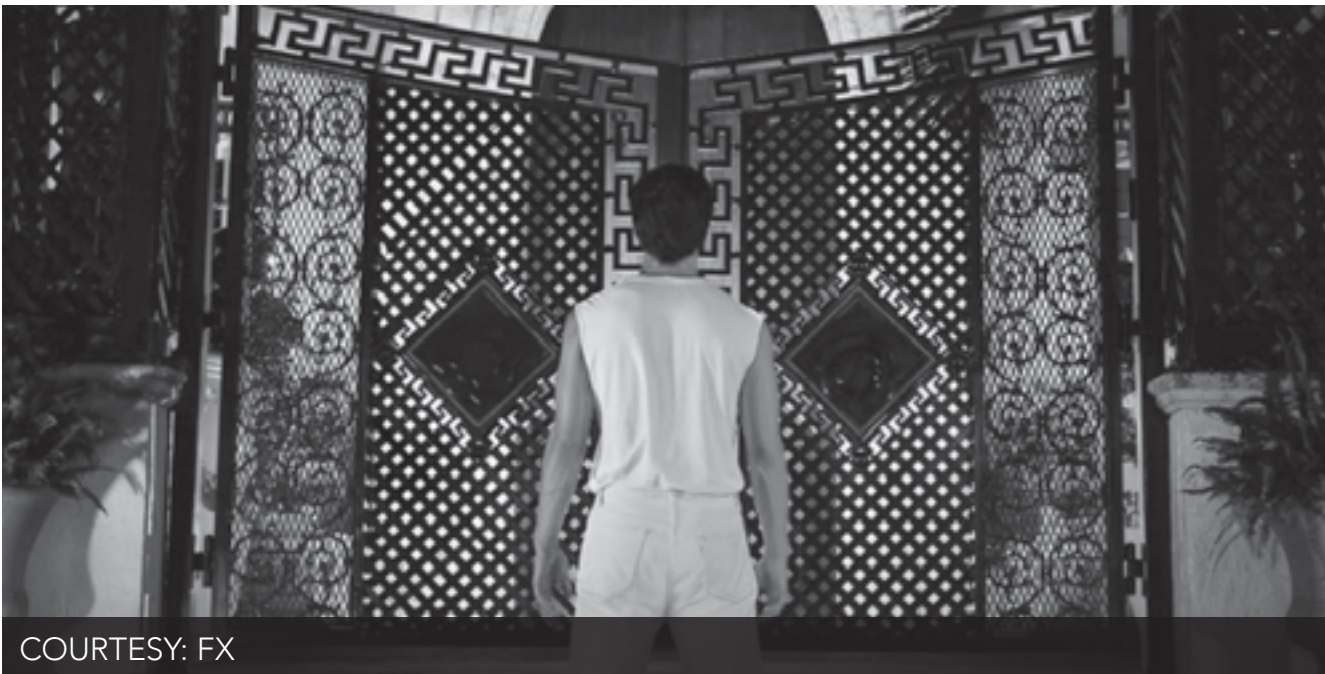
Schedule List

- Tuesday, Jan. 30, 2018 - 1 pm to 5:30 pm
- Wednesday, Feb. 7, 2018 - 1 pm to 5:30 pm
- Wednesday, Feb. 21, 2018 - 1 pm to 5:30 pm
- Wednesday, March 7, 2018 - 1 pm to 5:30 pm
- Wednesday, March 21, 2018 - 1 pm to 5:30 pm

Request for Special Needs or Accommodations
 Direct questions about or requests for special needs or accommodations to the LBCC Disability Coordinator, RCH-105, 6000 Pacific Blvd. SW, Albany, Oregon 97321. Phone 541-917-4789 or via Oregon Telecommunications Relay TDD at 1-800-735-2900 or 1-800-735-5232. Make sign language interpreting or real-time transcription requests 2-4 weeks in advance. Make all other requests at least 72 hours prior to the event. LBCC will make every effort to honor requests. LBCC is an equal opportunity educator and employer.

LBCC Comprehensive Statement of Non-Discrimination
 LBCC prohibits unlawful discrimination based on race, color, religion, ethnicity, use of native language, national origin, sex, sexual orientation, gender, gender identity, marital status, disability, veteran status, age, or any other status protected under applicable federal, state, or local laws. For further information see Board Policy P1023 in our Board Policies and Administrative Rules. Title IX, IX, & Section 504: Title IX, IX, & Section 504: Title IX, IX, & Section 504, CC-026, 541-917-4623; Lynn Cox, T-1078, 541-917-4806, LBCC, Albany, Oregon. To report: lbccstudentadvocate@public.lbcc.edu

AMERICAN CRIME STORY



COURTESY: FX

TV SERIES REVIEW:

The Assassination of Gianni Versace-American Crime Story

WHEN: Wednesdays at 10 p.m. on FX
STARRING: Edgar Ramirez, Darren Criss, Ricky Martin and Penelope Cruz
CREATED BY: Ryan Murphy (Based on the novel "Vulgar Favors: Andrew Cunanan, Gianni Versace and the Largest Failed Manhunt in US History" by Maureen Orth)
GENRE: sdsdf
RATED: TV-MA
OVERALL RATING: ★★★★★

"The Assassination of Gianni Versace" is the second incarnation of the FX anthology series "American Crime Story." Following off the success of "The People V. OJ Simpson," this series portrays a dark but fascinating version of one of the most infamous crimes in American history.

The series opens in 1997, with Andrew Cunanan (Darren Criss) firing the fateful shot that killed fashion designer Gianni Versace (Edgar Ramirez). From that point, the series shows how the two got to this moment in a nonlinear fashion that echoes films such as "Memento" and "Pulp Fiction." The result is a crime drama that rivals many theatrical films in terms of writing, acting and production values.

In addition to the leads, the series is bolstered by a strong supporting cast. Penelope Cruz stars

as Donatella Versace, and Ricky Martin stars in a surprisingly deft performance as Antonio D'Amico. Mirroring the success Ryan Murphy brought to "The People V. OJ Simpson," there is a compelling portrait of the events and individuals in the series' run.

The production design also sports details that help give the period settings a visual flair that enhances the story and the people within. Some of the music cues that back Cunanan's crimes include "Gloria" by Laura Branagan and Phil Collins' "Easy Lover." One episode also has a major clue revolving around the Lexus car phone of real estate magnate Lee Meglin (Mike Farrell).

One thing to know before watching this series: it is not for the faint of heart. Much like the first incarnation of "American Crime Story," the details of

this case are displayed in very graphic detail. Still, the series gives a compelling rendition of one of the most infamous crimes in modern history.

Overall, "The Assassination of Gianni Versace: American Crime Story" is another strong addition to Ryan Murphy's credits on FX. With future series in the wings centered around Hurricane Katrina and the Monica Lewinsky scandal, let's hope the same level of quality can be brought to the table as it has been here.



STORY BY
 STEVEN PRYOR
 @STEVENPRR2PRYOR



May Day:

Bin Laden's death was announced on May 1, 2011, and Hitler's death was announced May 1, 1945.

LOOKING FOR WORK?

- That fits your school schedule
- Earn a competitive wage
- Earn credits toward your degree for work experience

STILL INTERESTED?

Current job listings: http://bit.ly/CWE_jobs_blog

Application: http://bit.ly/LBCC-ATI_CWE-Application

MINIMUM QUALIFICATIONS:

- Min. 2.0 GPA
- One completed term of applicable college courses
- Pass drug screen & background check
- Legally able to work in United States
- Registration in CWE program at LBCC
- Prefer a one-year or longer commitment

QUESTIONS???

Contact: Lena Carr at cwe@linnbenton.edu with questions
www.linnbenton.edu/cwe

Fresh, local, organic groceries for everyone



follow us for savings, specials, recipes & more!

f t i @firstaltcoop

North Corvallis: **29th & Grant**
 South Corvallis: **1007 SE 3rd St.**
www.firstalt.coop Open daily 7am-10pm



2/7 to 2/13

Wednesday 2/7: Chili Verde w/Pork*, Chicken Cordon Bleu, Spinach Lasagna w/Garlic Bread. *Soups:* Tom Kha Gai*, Beer Cheese. *Salads:* Carnitas Thai Roast Pork, Mexican w/Spinach Cotija Quesadillas.

Thursday 2/8: Swiss Steak, Grilled Salmon*, Tofu Broccoli Stir Fry Over Rice. *Soups:* Avgolemono, African Sweet Potato*. *Salads:* Smoked Salmon Caesar, Caesar w/ Avocado.

Monday 2/12: Classic Eggs Benedict, Swedish Meatballs, Asparagus, Mushroom & Cheddar Quiche. *Soups:* Chicken Noodle, Split Pea*. *Salads:* Creole Shrimp, Chopped Salad w/Chick Peas.

Tuesday 2/13: Pork Ragu over Creamy Polenta*, Grilled Pork Chop*, Tempeh Black Bean Enchiladas* *Soups:* Beef Barley, Corn Chowder w/Green Chilies. *Salads:* Huli Huli Chicken OR Tempeh.

Monday to Friday - 10 AM - 1:15 PM

* Gluten Free



Did you know?

The Welsh word for 'Jellyfish' is Psygod wibli wobli.

Untitled

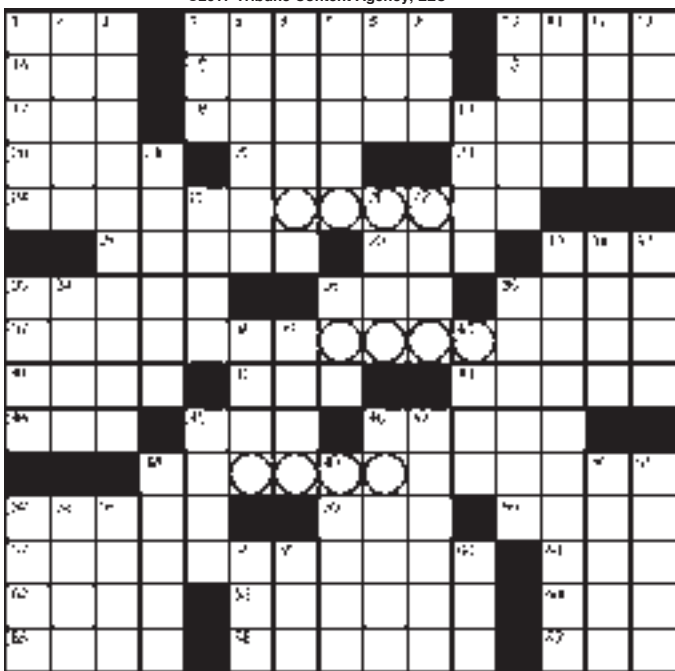
Beautifully stark
the clouds dark
Against the pink sky that is my heart
I'm feeling low
Where do I start?
How do I begin to explain
the pain
the embarrassment
the harassment of my brain
on my brain
each memory a stain
each mistake
I choose to make
A cloud, Dark
Against the pink sky that is my heart

BY RAVENSHIRE

Los Angeles Times Daily Crossword Puzzle

Edited by Rich Norris and Joyce Lewis

©2017 Tribune Content Agency, LLC



ACROSS

- 1 "Rhoda" production co.
- 4 It may follow cries of "Bravo!"
- 10 Brink
- 14 Longtime coach Parseghian of Notre Dame
- 15 Chestnut horse
- 16 Witnessed
- 17 B.A. or B.S.
- 18 With 57-Across, what a 37-Across does; also, as the circles show, what each answer containing them does
- 20 Alamo competitor
- 22 DDE's overseas command
- 23 Racers in some Wii games
- 24 Item that isn't on its regular hook
- 28 Gear components
- 29 Assist
- 30 Peace, to Pedro
- 33 Say yes
- 35 Journalist Curry
- 36 Warsaw native
- 37 Casino employee
- 41 The two
- 42 Tolkien forest shepherd
- 43 In ___: unborn
- 44 Stun
- 45 "The A-Team" actor
- 46 The "A" in James A. Garfield

- 48 Prepared goodies for the fundraiser
- 52 Blotch
- 55 Former transp. regulator
- 56 Confident words
- 57 See 18-Across
- 61 Keogh plan rel.
- 62 Many
- 63 Paradise
- 64 Third-qr. ender
- 65 Actress Russo
- 66 Fireplace shelf
- 67 Goal line crossings: Abbr.

DOWN

- 1 Start of a famous palindrome
- 2 Eternal City fountain
- 3 Legal administrator
- 4 Difficult curve
- 5 Tenant's winter complaint
- 6 Source of support
- 7 "Friend ___?": sentry's query
- 8 Slo-mo reviewer
- 9 Pipe shape
- 10 Composed piece
- 11 Expensive
- 12 Bloke
- 13 Fades to black
- 19 ___ out a win
- 21 The State of the Union, for one
- 25 Onionlike veggie
- 26 Moist and chilly
- 27 Nice
- 30 One drawn to controversy
- 31 Oriole or Jay
- 32 MapMyWalk starting point
- 33 "Waterloo" band
- 34 Healthy look
- 35 Pretend
- 36 Former New York governor George
- 38 Weightlifting move
- 39 Start a pot
- 40 German capital
- 45 Retail outlet
- 46 Say yes
- 47 Italian lawn bowling
- 48 Keep moist, in a way
- 49 "What I ___ My Summer Vacation": school essay
- 50 Like some seals
- 51 Spells, as of cold weather
- 52 Emotional mark
- 53 Beast of burden
- 54 Thames academy
- 58 Run smoothly
- 59 LAX announcement
- 60 ___ Kan pet food

Estonian:

"Mille peale eksam tuleb?"
"Paberi peale"



English:

"What will the exam be on?"
"Paper."

Portuguese:

Entao que tipo de sangue voce tem?
Vermelho.



English:

"What blood type do you have?"
"Red."

SUDOKU

THE SAMURAI OF PUZZLES By The Mepham Group

1					
6		9	1	5	4
		4			2
7		5	8		4
	6				3
3	5		4	6	9
	9		4		
5		1	3	7	8
					3

Level:

- 1 2
- 3 4

Complete the grid so each row, column and 3-by-3 box (in bold borders) contains every digit, 1 to 9. For strategies on how to solve Sudoku, visit www.sudoku.org.uk

© 2017 The Mepham Group. Distributed by Tribune Content Agency. All rights reserved.

French: Où vont les chats quand ils meurent? Au purrrchatoire.



English: Where do cats go when they die? To purrrgatory.

WOLF IN STUDENT'S CLOTHING

Students perform new rendition of "Red Riding Hood"

"Red Riding Hood" is set to hit the stage at the Russell Tripp Theater. This will be a double-cast, musical version of the classic tale.

This will not be the traditional Brothers Grimm's version with the Hunter, or the slightly gloomier Charles Perrault version, without the Hunter, but a version penned by Mike Kenny, a multiple award-winning playwright.

The play follows Stephen and Bridget while they are having a sleepover at their grandmother's house. To pass the time, the two tell stories, using items in the house as props. When fantasy and reality begin to overlap, they find themselves in the deep, dark woods, with a wolf stalking nearby.

"Because this one is such a big deal, whereas we bring elementary school students during daytime showings, there will be almost 5,000 kids over the course of pretty much all of February coming in to see this show. So, we run the show about 20 times for all the school groups. Because of that, it's typically theater students, or any students, that are cast," said Michael Winder, production coordinator for the theater.

While the show is being put on for kids, all are welcome to attend.

Not only does LBCC put on plays and musicals by college students, they also work with other primary schools as well. When a high school production needs a larger venue, the college will rent out the theater to these productions.

"We support the events that the LB music program does. They do a concert every term plus a couple other events. We also support the theater program here, that does a show every term. The fall is normally a student-directed show, and every winter we have our big



children's show. The one up now, 'Red Riding Hood,' is our 43rd annual production," said Winder.

This production of "Red Riding Hood" will be using guest director Rebecca Douglas, whose previous work has shown at the Majestic and Albany Civic Theater. The play stars LBCC students Phoebe May and Samantha Johnson as Bridget, and Jacob Birchard and Jakob Holden as Stephen.

"I've had an amazing time in the LBCC theatre program, I've learned a lot, I've met some incredible

ADDITIONAL INFORMATION

PUBLIC SHOWTIMES: Feb. 10 and 17 at 2 pm

For more information, contact the LBCC theater box office at 541-917-4531. For special needs and accommodations, call 541-917-4789 or Oregon Relay TDD at 1-800-735-2900 at

people, and I've had many wonderful experiences. I would do it all over again in a heartbeat," said Birchard.

"The experience has been both a relief and a challenge at the same time. A relief that with this show being double cast it gives each set of actors a moment to sit back and take a breath while the others take over. This is a very high energy show and being able to take that time to center yourself is really nice. On the other hand there's a lot of pressure with there only being two characters in the show, there's a lot of lines to memorize and a decent amount of music too. But I think it's all of the hard work that makes this process so worth it."

According to the LBCC News Service, the public showings are Feb. 10 and 17 at 2 p.m. in the Russell Tripp Performance Center, 6500 Pacific Blvd. SW, Albany. Admission is \$8 for adults, \$6 for under 18. Purchase online at www.linnbenton.edu/tickets, or at the door one hour prior to performance.

STORY BY **LEE FRAZIER**



Samantha Johnson and Jakob Holden are one of two duos that portray Bridget and Stephen. (Not pictured: Phoebe May and Jacob Birchard)



PHOTOS: ANGELA SCOTT

Little Red Riding Hood opened this past Tuesday for children visiting LBCC's Winter Children's Theatre.

