

HONORING OUR VETERANS

See Pages 4-5

PHOTO: SARAH MELCHER

The children in the crowd enjoy playing in the fall leaves of the 67th Annual Albany Veterans Day Parade on Saturday, Nov. 11. See pages 4 - 5.

THE LINN-BENTON
COMMUNITY COLLEGE



COMMUTER

The Commuter is the weekly student-run newspaper for LBCC, financed by student fees and advertising. Opinions expressed in The Commuter do not necessarily reflect those of the LBCC administration, faculty and students of LBCC. Editorials, columns, letters, and cartoons reflect the opinions of the authors.

LBCC is an equal opportunity educator and employer.

Letters Welcome

The Commuter encourages readers to use its "Opinion" pages to express their views on campus, community, regional and national issues. The Commuter attempts to print all submissions received, but reserves the right to edit for grammar, length, libel, privacy concerns and taste. Opinions expressed by letter submitters do not represent the views of the Commuter staff or the College. Deliver letters to:

Address:

The Commuter
Forum 222
6500 Pacific Blvd. SW
Albany, OR 97321

Web Address:

LBCcommuter.com

Phone:

541-917-4451, 4452 or 4449

Email:

commuter@linnbenton.edu

Twitter
@LBCommuter

Facebook
The Commuter

Instagram
@LBCommuter

Our Staff

Adviser

Rob Prieue

Editor-in-Chief

Alex Gaub

Layout Designer

Rebecca Fewless

Managing Editor

Sarah Melcher

Digital Editor

Josh Stickrod

A&E

Steven Pryor
Caleb Barber

Photography

Angela Scott - **Editor**
Davis Ihde

Web Master

Marci Sischo

Advertising

Vicki Ballestero

Sports

Cam Hanson

Contributors

Millicent Durand
Lee Frazier
Katelyn Boring

ELECTION DAY 2018

The results of the Oregon election and ballot measures votes came in last week. Unlike some states... (ahem..Florida)... we are not stuck in limbo waiting for recounts. Without further ado, here are our new (or not so new) elected officials and new (or not new) measures.

Oregon U.S. House Representatives:

- District 1:**
Suzanne Bonamici* (D)
63.5%
- District 2:**
Greg Walden* (R)
56.6%
- District 3:**
Earl Blumenauer* (D)
72.8%
- District 4:**
Peter A. DeFazio* (D)
56.0%
- District 5:**
Kurt Schrader* (D)
55.1%

* = *incumbent*

National Governor Election Results:

23 Democrat Seats, 25 Republican Seats, 2 TBA

Democrats gained 7 seats in:

- Nevada • New Mexico • Kansas • Illinois
- Wisconsin • Michigan • Maine

Republicans gained 1 seat in:

- Alaska

Oregon Ballot Measure Results:

102: Yes

Oregon counties, cities, and towns may now use bond revenue to fund the construction of affordable housing, without necessarily retaining complete ownership of that housing. The decision to devote bond revenue to any new projects must first be voted upon by the people of Oregon.

103: No

State and local Oregonian governments retain the authority to enact taxes on groceries.

104: No

A 3/5ths supermajority vote is required for any bills that raise revenue in Oregon, but are only limited to bills that levy/increase taxes. This does not include fees, changes to tax exemptions, deductions, or credits.

105: No

Oregon law enforcement's cooperation with federal immigration enforcement remains limited, preserving the status of sanctuary state.

106: No

Abortions in Oregon continue being publicly funded.

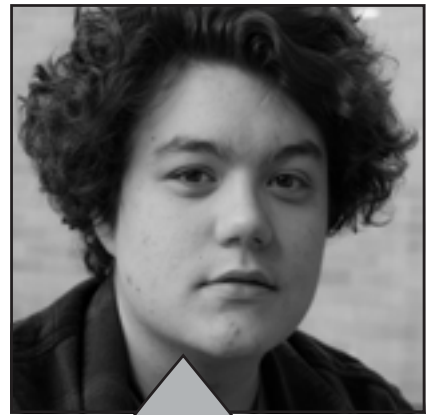
CAMPUS VOICE

What is your favorite Thanksgiving food?



CASSANDRA HYDE
ANIMAL SCIENCE

"YAMS, DEFINITELY."



ETHAN ECKERT
NUCLEAR ENGINEERING

"MASHED POTATOES, THAT'S LIKE THE ONLY THING I'LL EAT."



SHYANNE BOLTON
WILDLIFE BIOLOGY

"I REALLY LIKE A BITE OF TURKEY, STUFFING, AND GRAVY."

TAYLOR ECKHOFF
BUSINESS

"MAC AND CHEESE."



JOHN WEST
ENGLISH

"MASHED POTATOES. YOU CAN DO SO MANY THINGS WITH POTATOES, MASHED POTATOES ARE JUST THE BEST."



STORY AND PHOTOS: ALEX GAUB

SHAKE-UP AROUND THE WHITE HOUSE

Critic of Mueller investigation to replace Sessions as US Attorney General

STORY BY **CALEB BARBER**

After an eventful midterm election, Democrats have enough seats in the house for supermajority votes, which means that Americans will be seeing more progressive bills being considered in 2019 and 2020. Also, with the House and Senate being skewed in such a way, many items on the Trump administration's agenda will have a much harder time coming to fruition.

House representative seats aren't the only positions trading hands. On November 7th, Jeff Sessions gave up his title of Attorney General of the United States at the behest of President Trump.

Serving first as United States senator from Alabama from 1997 to 2017, Jeff Sessions supported and was highly involved in Donald Trump's presidential campaign in 2016. His loyalty was recognized after Trump won the presidency, Sessions was appointed the position of attorney general in 2017 at a critical moment in the new presidency. Amid allegations of Russian collusion in his 2016 campaign, Trump needed an attorney general he could trust to lead a thorough investigation.

Throughout the first year of Trump's presidency, Sessions recused himself from any involvement with the Justice Department investigation led by special council member Robert Mueller. Because of his close involvement with Trump's campaign, Sessions considered his involvement in such a case to be a conflict of interest, handing over most of the investigation to Mueller to prevent it from being "improperly influenced by political considerations."

For several months, Trump bashed Session's recusal, referring to him as "weak" and "disgraceful" for the passive role he was playing in the investigation. In June of 2017, Sessions



announced he would be leaving his appointment, waiting until November 7th of this year to avoid disrupting midterm elections.

Now, Trump plans to appoint Matthew Whitaker, a former federal prosecutor from Iowa who has been highly critical of the Mueller investigation since it began. He has phrased on CNN's website his disapproval of the way this case is being handled, and has drawn considerable attention from the Trump administration.

This new attorney general has been appointed under the assumption that his role in the Russian collusion investigation will not be a passive one. Trump seems hopeful that Whitaker's distaste for the memo-passing and recusing during Session's appointment will translate into an active position in pushing this investigation towards its end.

While his appointment seems imminent, Whitaker has gained his own harsh critics. The primary claim that he is unfit to hold this office is due to his ties to a witness in Mueller's inquiry, Sam Clovis.

Jeff Sessions' passive stance as attorney

general was reactive to the ongoing investigation surrounding president Trump's involvement with the Russian government during his campaign. Since Sessions' was directly involved with this campaign, it is understandable that he would refrain from directly influencing the investigation, instead letting deputy attorney general Rod Rosenstein appoint Robert Mueller to the case.

Now that Trump is appointing someone with significantly less involvement with this pivotal investigation, it is possible that Whitaker might try take more direct action as attorney general. With his connections to an involved witness, however, the constitutionality of his actions will be under powerful scrutiny all over the country.

Thanksgiving Food Drive!

LBCC's Thanksgiving Food Drive is wrapping up this week. Money and food will stop being collected on Thursday, Nov. 15. Shopping will be conducted on Friday, and boxes will be put together and handed out on Saturday, Nov. 17.

Donation boxes are located in the library, South Santiam Hall, North Santiam Hall, Mackenzie Hall, and more locations across campus.

For more information on contributing or being the recipient of a food basket contact Tammi Drury at druryt@linnbenton.edu or by phone at 541-917-4818.

Suggested food items are:

- Canned corn or green beans • stuffing • Canned Pumpkin pie mix with spices added
- Olives • Evaporated milk • Pudding • Jello • Marshmallows • Gravy packets • Canned Yams

A Warm Red Autumn

FEATURED PRESENTERS:

- Kaedence Eaton (2008 - 2009)
- Amy Earls (2009 - 2010)
- Whitney Smith (2010 - 2011)
- Ruth Krueger (2011 - 2012)
- Kiera Eller (2013 - 2014)
- Coco Shanks (2014)
- Dari Lawrie (2015 - 2016)
- Christopher Mikkelson (2016 - 2017)
- Shane Stanhope (2017 - 2018)
- Waldo French (current)

**A Reading of Poetry and Prose
Celebrating a Decade
of LBCC Student Poet Laureates**

**Thursday November 15 at 7:00 P.M.
Benton Center Atrium**



Request for Special Needs or Accommodations: Direct questions about or requests for special needs or accommodations to the LBCC Disability Coordinator, RD4-105, 6500 Pacific Blvd, SW, Albany, Oregon 97321, Phone 541-917-4789 or via Oregon Telecommunications Relay TTD at 1-800-735-2900 or 1-800-735-1232. Make sign language interpreting or real-time transcribing requests 2-4 weeks in advance. Make all other requests at least 72 hours prior to the event. LBCC will make every effort to honor requests. LBCC is an equal opportunity educator and employer.
LBCC Comprehensive Statement of Nondiscrimination: LBCC prohibits unlawful discrimination based on race, color, religion, ethnicity, use of native language, national origin, sex, sexual orientation, gender, gender identity, marital status, disability, veteran status, age, or any other status protected under applicable federal, state, or local laws. For further information see Board Policy P1015 in our Board Policies and Administrative Rules, Title II, IX, & Section 504: Scott Rolan, CC-108, 541-917-4425; Lynne Cox, T-167B, 541-917-4806; LBCC, Albany, Oregon. To report: linnbenton-advocate.symplicity.com/public_report.

WE CAN DO BETTER!

The power of using dialogue in our relationships, communities, and as a country

Thursday, November 15th from 1-2pm
Russell Tripp Performance Center
Reception follows in theater lobby
Free event, reserve your seat now!
<https://ttvs.org/lbcc-nov-15>



"RED MOM + BLUE MOM"

Caitlin Quatromani and Luran Arledge, friends and professional working moms who are on opposite sides of the political spectrum, bring their ground-breaking talk to Linn-Benton Community College.

PRESENTED BY:

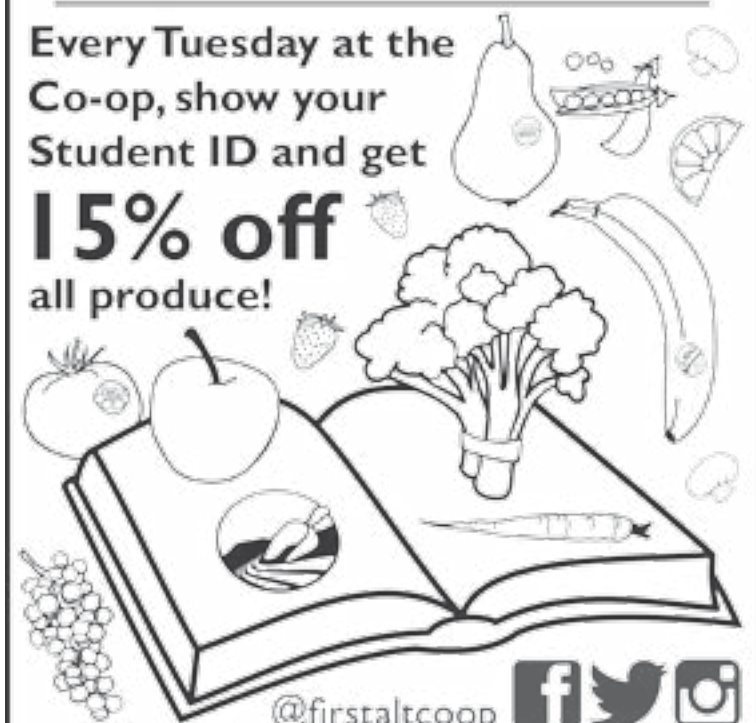
respect + rebellion



LBCC prohibits unlawful discrimination based on race, color, religion, ethnicity, use of native language, national origin, sex, sexual orientation, gender, gender identity, marital status, disability, veteran status, age, or any other status protected under applicable federal, state, or local laws. For further information see Board Policy P1015 in our Board Policies and Administrative Rules, Title II, IX, & Section 504: Scott Rolan, CC-108, 541-917-4425; Lynne Cox, T-167B, 541-917-4806; LBCC, Albany, Oregon. To report: linnbenton-advocate.symplicity.com/public_report.

First Alternative NATURAL FOODS CO-OP

Every Tuesday at the Co-op, show your Student ID and get **15% off** all produce!



@firstaltcoop



North Corvallis: **29th & Grant**
South Corvallis: **1007 SE 3rd St.**
www.firstalt.coop Open daily 7am-10pm

67TH ANNUAL ALBANY VETERANS DAY PARADE



PHOTOS: SARAH MELCHER

Lebanon, Oregon JROTC collected money to buy flags to place on the graves of local veterans.



A veteran riding in a custom built go-kart while saluting the crowd with an old photo.



Al-Kader Shriners rode through the parade on quads and tiny go-karts. They are an organization of brotherhood that helps provide care for children and families in need.

Lebanon, Oregon JROTC marched in formation during one of the biggest Veterans Day Parades west of the Mississippi.



CORVALLIS-OSU
SYMPHONY ORCHESTRA
 SEASON 113 | 2018-2019

"HOLIDAY CONCERT"
 MARLAN CARLSON, MUSIC DIRECTOR
 FRIDAY, NOVEMBER 30, 7:30 PM | THE LASELLS STEWART CENTER, OSU
WWW.COSUSYMPHONY.ORG



Bernstein: Chichester Psalms (1965)
with OSU Choirs
Holiday Favorites

TICKETS PRICES
All seats are reserved.

Main Floor:
\$22 advance, \$25 door (A-C & V-Z)
\$27 advance, \$30 door (P-U)
\$32 advance, \$35 door (D-N)

Balcony:
\$22 advance, \$25 door (DD-GG)
\$27 advance, \$30 door (AA-CC)

To request accommodations relating to a disability, call 541-286-5580 one week in advance.

Up to three K-8 students accompanied by a ticketed adult, and all high school and college students with current ID, may be given free general admission tickets at the door starting one hour prior to the concert, subject to availability.

WHERE TO PURCHASE TICKETS
Online at cosusymphony.org or at the LaSells Stewart Center one hour before each performance.

CONTACT THE SYMPHONY
PO Box 1582
Corvallis OR 97339
541-286-5580
office@cosusymphony.org
cosusymphony.org
facebook.com/cosusymphony



Linn County Search and Rescue marched in the parade in formation during the 67th Annual Albany Veterans Day Parade.



Boat tail hot rod holds crowd.

Linn County Sheriff's Office stopped occasionally to hand out stickers to the kids during their ride through the parade.



The American Rosie the Riveter Association passed by shortly after the parade began at 11 a.m. The parade began at 11a.m. because it observes the Armistice of Nov. 11, 1918 which was signed on the eleventh hour of the eleventh day of the eleventh month, ending WWI.

A little girl watches as an old army Jeep drives by in the Albany Veterans Day Parade



Veterans rode in many different floats during the Veterans Day parade.

POWERING TOWARD PLAYOFFS

The No.5 Roadrunners finish the year in dominance and look to continue the momentum in the postseason



STORY BY
CAM HANSON

LBCC volleyball finished the regular season at home this past Wednesday with a win against the Lane Community College Titans and head into this week ranked number five on the Under Armour coaches poll. This bolsters their resume heading into the NWAC regional playoffs and gives them another boost before the spike in competition. The win wasn't just the home finale and regular season finish, it was the fifth and final game that was a part of a whopping 5 match winning streak for the Roadrunners. In these past five matches, LBCC shutout their opponents in each one which combined for a 15-0 set score overall. This resurgence came off of a surprising loss to south division rival Chemeketa, who finished the season 16-16 with a six match win streak respectively. The dominant stretch also pushes LBCC to a 30-win season on the year with a 14-1 record in conference.

LBCC's win against Lane was no easy bout, and proved itself as a match that could tune the Roadrunners up before a playoff that presents competition the Roadrunners haven't faced all season. The Roadrunners started off well against the Titans, winning the first set 25-19, but the Titans would test the limits of the Roadrunners in the next match, taking it to overtime. This tight set would see LBCC winning 27-25 before finishing the job off in the next set, 25-15. Some notable players on the night for Roadrunners included Grace Phillips, who totaled 19 kills on 32 attempts, finishing the night with a .531 kill percentage. Kya Knuth also continued her MVP season leading the team with 17 digs on the night and creating opportunities for her hitters.

The competition for the Roadrunners only gets more intense from here with a stacked list of other division leaders from the north, east, and west divisions in the NWAC. From the north come the #4 Edmonds Community College Tritons. The Tritons hold a 29-6 record overall with an undefeated 12-0 record in conference, and will face in-division rival Tacoma this week in the first matchup of the postseason. LBCC has met with the Tritons twice this season, tying the season series 1-1. LBCC initially beat the Tritons in a nail-



PHOTO: DAVIS IHDE

The Roadrunners have used their depth across the roster and have been able to stay fresh each game. (McKya Filley No.5)

biter by a set score of 2-0, winning the first set 25-21 and digging deep to put them away in overtime, 28-26. Edmonds would get their revenge later in the season, beating LBCC 3-1. The Roadrunners won the first set 25-19, before falling 25-20, 25-22 and 25-18 in the next three.

The east region holds one of the best teams in the entire conference, the #1 Spokane Community College Sasquatches, as well as LBCC's first round opponent, the North Idaho Cardinal. Spokane boasts an astounding undefeated record overall, which currently stands at 35-0 with a 16-0 in conference. LBCC never met the Sasquatches in play this season, but a match between the two could be decided in the postseason. Finally, the west region leader stands as the #2 Pierce College Raiders, who are right behind Spokane in the coaches poll and have a record of 31-4 with a 14-0 record in conference. LBCC met with the Raiders more than once this season, losing their first bout together in a score of 2-1. This was an early preseason match and saw the Roadrunners win the first set 24-23, while losing the next three sets. The two teams met later in the season, with the Roadrunners exacting their revenge against the Raiders and winning a roller coaster matchup 3-2. LBCC and PC shared

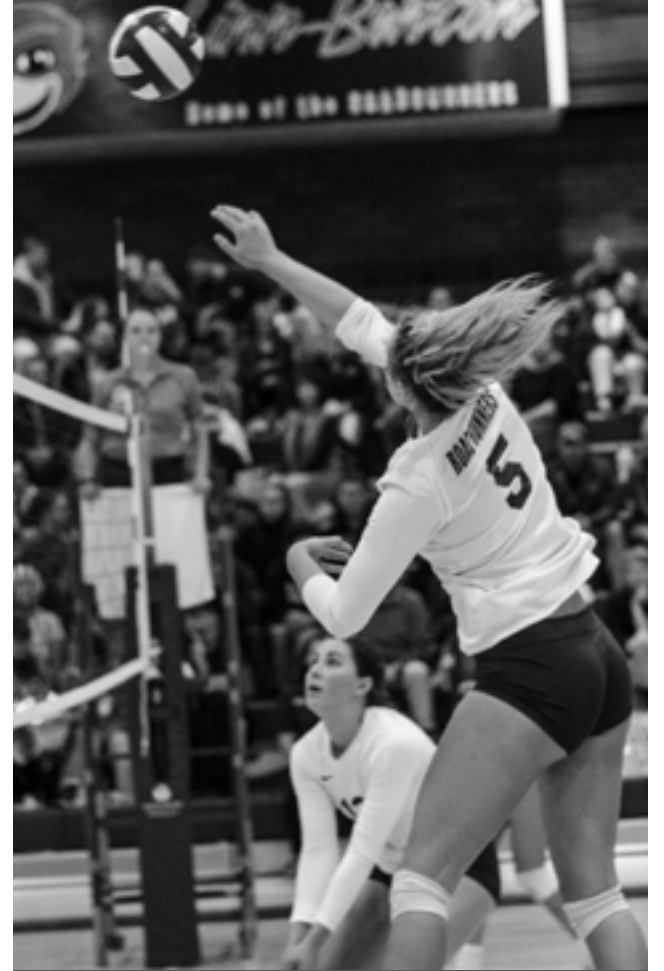


PHOTO: LEE FRAZIER

The Titans brought LBCC to OT in the second set, but LBCC pulled out the victory and fought to secure the sweep.

matches back and forth, before the Roadrunners put the match away in the fifth set, 15-12. The two teams combined for a total of 201 points and kept it close in each set.

The stats don't lie, and they all show that LBCC can matchup with the top teams in the conference when faced against them. The NWAC regional playoffs will host 16 teams, four from each conference. LBCC is riding high on a dominant streak, and has all the momentum heading into the postseason. It's a bracket that has all of the pieces to be a memorable one, with teams on dominant streaks, as well as one that hasn't yet tasted defeat.

The NWAC playoffs will go from Nov. 15-18 and will be held in Tacoma, Washington. LBCC will start their playoff run by facing North Idaho (23-11 overall, 11-5 conference). The two teams have met twice this season, holding a 1-1 tie on the season series.



PHOTO: LEE FRAZIER

Freshman Ally Tow currently holds the fourth spot in conference in overall kills, boasting 335 overall.

Campaign contributions Budgets
Marriage licenses
Birth records ? Statistical data
? ???
Freedom of Information Act ?
? Voting records
Property transactions Business licensing

BOTH FORUMS
ARE FREE AND
OPEN TO THE
PUBLIC

OPEN RECORDS FORUMS

Thursday, Nov. 15
CC-103, LBCC Albany Campus
2:30 p.m. (students and staff) and 5:30 p.m. (general public)

Whether you're looking for election spending and campaign contributions, property transaction information, or business licensing documents, much of this public information is easily accessible to citizens -- if only they knew how to best access the records.

Join us as we demystify the state's public records systems, and learn to navigate the resources and tools needed to easily access information and records.

Forum led by Ginger McCall, Oregon's Public Records Advocate. Hosted by LBCC's Communication Department, Journalism Department, and The Commuter.
For more information contact: Zakir Khan (khanz@linnbenton.edu, 541-917-4834) or Rob Prieue (prieue@linnbenton.edu, 541-917-4563)



COURTESY: DENOFGEEK.COM

TV SERIES REVIEW:
Chilling Adventures of Sabrina

DIRECTOR: Rob Seidenglanz, Maggie Kiley, Lee Toland Krieger
STARRING: Kiernan Shipka, Lucy Davis, Chance Perdomo, Michelle Gomez, Jaz Sinclair, Tati Gabrielle, Adeline Rudolph, Richard Coyle, Miranda Otto, Abigail F. Cowen, Lachlan Watson
PRODUCTION: Warner Bros. Television
DISTRIBUTOR: Netflix
OVERALL RATING: ★★☆☆☆



REVIEW BY
LEE FRAZIER

“Chilling Adventures of Sabrina” is one of the new Netflix original shows released on Oct. 26. The show focuses on a 15-year-old Sabrina (Kiernan Shipka) as she navigates through her life as a half mortal and half witch, leading up to her 16th birthday.

The show does not follow its predecessor from 1996 in term of light heartedness. The current rendition is dark and brutal, albeit entertaining.

There is a lot more to this show than just witches, spells, and satanic offerings though. It brings to light gender identity, as in its casting of Lachlan Watson as “Susie”. Lachlan is an actor with the pronouns he/him and they/them. The series shows the hardships of a person that identifies as a different gender in a small, overall unaccepting town. The show also subtly focuses on abuse in the family, whether it is emotional or physical, and the importance of friendship.

The series may have mixed reviews, but it has a 7.9 rating on IMDB.COM, which is pretty good for a Netflix show. On Rotten Tomatoes it has a 90% certified fresh, and that is an astounding rating for a Netflix release, which has been known to release some unfavored content with the critics.

Some of the reviews on IMDB, while negative, point to some issues that have bothered more than one person, and it is a little jarring when you see it, over and over throughout the first season. The issue is a certain effect that is applied in post-production. While most films and shows use “depth of field” to focus on a certain element of a scene, “Chilling Adventures” uses an edge blurring effect which comes across as a poor attempt at creating this depth without using the proper lens settings. It may be purposeful, and the show makers might be trying to convey something, but it just looks like an oversight during production that was remedied with a cheap fix. Over all, the effect is slightly nauseating, and if you wear corrective lenses, you may think it is your glasses or contacts that are smudged.

Minor technical qualms aside, the show is

filled with vibrant cinematography and accompanied by an underlying score that gives an ethereal feel to the series. The acting leaves none wanting for more as each performance is delivered to near perfection. The set design is well executed and draws you in to the little town of Greendale.

For those that wonder how much different the new show is from the old, the names and places are the same. If you take the old show, add some murder, sprinkle a little satanic ritual, toss in a dash of fear and loathing breaded with teenage angst, you get “Chilling Adventures of Sabrina”. Yes... Salem the cat is in the show as well.

If you have run out of things to watch, and this show has yet to be streamed, it is definitely worth watching, although I wouldn't suggest letting young children watch it beings it is not the “family friendly” version that appeared in 1996.

CROSSWORD PUZZLE

- ACROSS**
- 1 First principles
 - 5 Small goby
 - 9 Bird
 - 12 Vegetable
 - 13 Hence
 - 14 Yellow Sea arm
 - 15 Evening (Ital.)
 - 16 Bosh
 - 18 Grandfather of Saul
 - 20 Weight allowance
 - 21 Hog's guts
 - 23 Biddy
 - 24 Begin
 - 25 Daughters of the American Revolution (abbr.)
 - 26 Double (abbr.)
 - 29 Ibsen character
 - 30 Science class
 - 31 3 (Rom. numeral)
 - 32 Sp. article
 - 33 Fishing line cork
 - 34 Desolate

- 36 Bird
- 37 Headstrong
- 38 Scientific name (suf.)
- 40 Card
- 41 Dire
- 43 Freshwater worm
- 46 Grab
- 47 Gray wolf
- 48 Eight (pref.)
- 49 Father: Arabic
- 50 Elbe tributary
- 51 Interpret

- DOWN**
- 1 Able-bodied seaman (abbr.)
 - 2 Stinging insect
 - 3 Horned viper
 - 4 Firm
 - 5 Fr. artist
 - 6 Absent without leave (abbr.)
 - 7 Son of Hermes
 - 8 Edible shellfish
 - 9 Without (Ger.)

ANSWER TO PREVIOUS PUZZLE

L	C	D	R	F	D	C	S	A			
K	O	A	E	E	A	U	O	P	H	I	
E	I	N	E	Q	U	E	S	T	I	O	N
T	R	I	N	U	N	N	I	N	Y	C	
S	A	B	E	A	G	T					
A	R	T	L	E	S	S	H	A	G	A	R
D	I	E	T	T	I	P	M	A	I	D	
E	A	R	E	D	B	A	R	I	L	L	A
R	A	F	L	A	L	O					
N	P	G	R	U	L	E	D	S	P	A	
S	A	N	S	K	R	I	T	A	H	A	B
A	L	A	E	O	N	O	R	E	N	D	
E	R	A	R	E	T	A	S	T			

- 10 Old-style verb
- 11 Tall tale
- 17 Sea eagle
- 19 Comparative ending
- 21 Cure
- 22 Handle
- 23 Habakkuk (abbr.)
- 25 Drop
- 26 Shame
- 27 Chew
- 28 Song (Ger.)
- 30 Atr. eye-worm
- 33 Church officer
- 34 Cooking vessel
- 35 Trojan hero
- 36 Cyclades island
- 37 Sorrow
- 38 Arabic (abbr.)
- 39 Phil. island
- 40 Rood screen
- 41 Genetic letters
- 42 Daze
- 44 Thus (Lat.)
- 45 Arabic letter

1	2	3	4	5	6	7	8	9	10	11
12				13				14		
15				16				17		
		18		19				20		
21	22					23				
24					25			26	27	28
29				30				31		
32				33				34	35	
				36				37		
	38	39				40				
41				42				43	44	45
46				47				48		
49				50				51		

THE COMMONS
* CAFETERIA *

11/14 to 11/20

Wednesday 11/14: Beef Stew*, Chicken Massaman Curry w/Steamed Rice*, Stuffed Portobello w/Bearnaise*, Soups: Creamy Chicken & Mushroom, Spicy Chickpea*. Salads: Pesto Grilled Chicken/Portobello Caprese.

Thursday 11/15: Braised Lamb*, Grilled Chicken, Hindquarters, Macaroni & Cheese. Soups: Chicken Tortilla*, Dilled Potato Chowder. Salads: Smoked Salmon/Vegetarian w/ Avocado Caesar.

Monday 11/19: Chicken Paprikash, Roasted Turkey w/Cranberry Sage Veloute*, Mushroom Risotto*. Soups: French Onion*, Thai Curry Lentil & Sweet Potato*. Salads: Lamb (Thai Chicken), Roasted Cauliflower.

Tuesday 11/20: -THEME DAY-. Salads: Creole Shrimp/Spiced Sweet Potato Wedges.

Monday to Friday - 10 AM - 1:15 PM

* Gluten Free

SUDOKU

Complete the grid so each row, column and 3-by-3 box (in bold borders) contains every digit.

5			2					4	
3	4			5				2	9
					4	8			
			8	1				6	
	3	6					9	1	
	1			7	6				
		8	4						
4	9			8				5	6
1						3			7



CENTER STAGE

PHOTOS: ANGELA SCOTT

The award-winning commedia dell'arte theatre production, "I Got Guns," directed by Dan Stone, debuted on Nov. 9 and performances will also be held Nov.16-17 at Russell Tripp Performance Center. Performances begin at 7:30 p.m., as well as a 2 p.m. matinee Nov.17. Tickets are available at the box office in Takena Hall or order online at theater@linnbenton.edu.

T.J. Hagey, as Arlecchino, performs as the host and often enables other characters in the classic role as a trickster.

(Left): Nate McCullough and T.J. Hagey sit back and watch the other characters struggle. Austin Allen (right)



Sophie Brown, as Isabella is in disguise and determined to run a scheme. Her character is based on the classic bourgeoisie lady with a modern take on situational irony.



Korina Rayburn, as Captain, portrays an antagonist throughout the comedic performance.

