

The Whole Truth About LBCC

**plus
A Bunch of Other
Unrelated Information**

A handbook for the enlightenment
of the students at
Linn-Benton Community College 1977-78

TABLE OF CONTENTS

Introduction	1
Dean of Students	2
College Center Services	2
Student Activities	2
Drama	3
Music	3
Food	4
Recreation	4
Housing	4
Lost and Found	4
Ticket Sales	5
Bulletin Boards	5
Scheduling of Meetings and Events	5
Commuter [Student Newspaper]	5
Lockers	5
Change	5
Clubs and Organizations	5
Guidance Services	6
Academic Advising	6
Counseling	6
Health Services	6
Health Insurance	6
Career Information	7
Financial Aids	7
Job Placement	7
Admissions Office	7
Developmental Learning Center	8
Math Lab	8
Study Skills Center	8
Testing	8
Athletics	8
Student Government	9
Learning Resource Center	9
Library	9
Media Services	9
Graphic Services	9
Campus Security	10
Parking	10
Bookstore	10
Check Cashing	10
College Committees	10
Student Rights, Freedoms, Responsibilities and Due Process	11
Helpful Public Services	11
Public Transportation	12
How to Live Cheaply	13
Important Phone Numbers	14
LBCC Calendar	15
Campus Map	16

THE WHOLE TRUTH ABOUT LBCC

is dedicated to those students who master their work instead of allowing it to master them.

Compliments of:
LBCC College Center
Activities, Services & Programs
Car Pooling is Encouraged

INTRODUCTION

If you are reading this, you are probably a student at Linn-Benton Community College. That means you will be doing any or all of the following things during the next year: standing in line at registration and the bookstore, getting to know the likes and dislikes of a new instructor, running to get to class on time, studying for exams, spending an entire weekend writing a paper that was due last Monday, and so on, and so on.

Being a student at this college has many advantages too—such as listening to a professor who makes political science more interesting than an Alfred Hitchcock movie, or sitting in the Commons with a new friend, or being able to take an old engine and make it purr like new. It's nice to spend an hour reading the paper in the Fireside Room or listen to a free Swing Choir Concert at lunch in the Forum. Days full of experiences are waiting for you at LBCC. This handbook deals mainly with the extra-curricular or your out-of-the-classroom learning experiences. We expect these "informal" learning experiences will be as meaningful as the formal ones.

This handbook was compiled and edited for those students who are starting out or continuing their studies at LBCC. We hope it will be of assistance to you. If you have some suggestions on how it might be improved, please leave them at the College Center Office (CC214). GOOD LUCK!!!



Don't Ask Me!

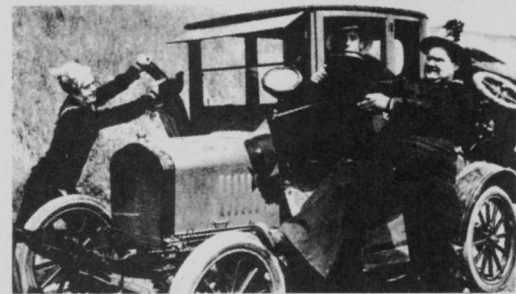
DEAN OF STUDENTS: CC105 [x420]

The Dean of Students is responsible for the administration and supervision of all student services. Student service programs include the College Center, Guidance Services, Financial Aids, Admissions and Records, Placement, Athletics, and Developmental Center. In addition, the Dean of Students is the administrator responsible for coordinating due process procedures for student grievances. The goal of the office is to provide services which are responsive to student needs. If you have suggestions or criticisms concerning any of the services, contact the Dean of Students office.



COLLEGE CENTER SERVICES: CC214 [x283]

The College Center provides a large variety of services for the convenience of students, staff and the community at large. These services include such things as food sales, game room, housing referral, ticket sales, and a number of activities and special events provided for entertainment and education of LBCC students. For general information and referral, come to the College Center window.



Various LBCC Student Activities.

STUDENT ACTIVITIES: CC214 [x283]

Each year, the ASLBCC (that's you) elects a student Activities Program Director and allocates funds for a well-balanced activities program that will be both educational and entertaining. The activities program includes:

Concerts—Chautauquas every Wednesday and Jam Sessions every Friday (where you're always invited to perform) both are held in the Alsea/Calapooia Room from 11:30 a.m. to 1:00 p.m. There are also several noon and/or evening concerts per term in the Forum or Alsea/Calapooia Room.

Lectures and Symposiums—An offering of lectures and symposiums on a variety of current interest topics will be held throughout the academic year in the Alsea/Calapooia Room and the Forum.

Films—Films are shown on a regular basis throughout each term. Usually they are shown in the Alsea/Calapooia Room on Thursdays. In addition, video tapes are shown in the Fireside Room at various times during the year.

Special Events—This area includes dances (approximately two per term), the Children's Christmas Party, Dinner Theatres, etc.

Exact schedules on all of the above happenings can be found in the College Center Office at the beginning of each term.

Most importantly, your input is needed to assist in providing programs that will be of interest to you. It is also possible to gain valuable experience and academic credit for assisting with the Student Activities programming. For further information about your involvement in programming, contact the Coordinator of Student Activities (CC214).

What is the shortest river in the world? Answer on page 9 .

John D. Rockefeller [1839-1937], Question on page 4 .



DRAMA: F108 [x287]

Want to try your hand at acting, directing or working backstage on a theatre production? Currently, the LBCC drama department produces one show per term. In addition students also have an opportunity to plan and produce shows. Anyone can participate as long as they are full or part-time students at LBCC. If you're not in the play, at least come join the audience; you're in for a treat.

Mrs. Myra Franklin of Cardiff, Wales saw the "Sound of Music" more than 900 times.

Who is the world's most successful recording artist?
Answer on page 6 .



MUSIC: H213 [x410]

If you sing or play a musical instrument, check out the Music Department. There is an LBCC Jazz Band, Swing Choir, and Concert Choir which perform each term for the College and the community. These concerts are always entertaining and usually free.



Who was the world's first billionaire? Answer on page 1.

You can get anything you want at LBCC Food Service.

FOOD: CC214 [x283]

Food's a topic that most everybody is interested in. The LBCC food service offers a wide variety to choose from. The Commons has a large self-service area with a variety of foods and drinks. It's open from 7:30 a.m. to 9:00 p.m. and a hot dish area is open from 11:15 a.m. to 1:15 p.m. for lunch. The Sprout (Natural Foods) is open in the Alsea/Calapooia Room from 11:00 a.m. to 12:40 p.m. Finally, the Santiam Room (restaurant style) is open for breakfast from 7:30 a.m. to 10:00 a.m. and for lunch from 11:00 a.m. to 12:40 p.m. Of course, these hours will vary during finals week, vacations, and summer term.

If all else fails, there's always the vending machines in the southwest corner of the Commons.

RECREATION: CC212 [x283]

Ping-Pong, Billiards, Pinball, Foosball, and Chess—all of these are available in the College Center. You can check out the billiards, ping-pong and chess equipment at the College Center window. All equipment can be used for a small fee. This is a good way to spend your between class hours if your study load is small.

LOST AND FOUND: CC214 [x283]

Lose something? Find Something? Go to the College Center window to find it or turn it in. A file is kept on all lost and found items that are brought to this office.



Tooth decay. Question on page 6.

HOUSING: CC214 [x283]

Looking for a place to crash or maybe you've got a house or a room to rent? If either of these is the case, contact the College Center Office. There is a file where housing possibilities are listed and you can either find housing or rent housing through this service.

TICKET SALES: CC214 [x283]

Tickets for plays, concerts, lectures, etc. both at LBCC and in Corvallis, Lebanon, Sweet Home, and Albany can be purchased at the College Center window.

BULLETIN BOARDS: CC214 [x283]

Do you have something you want posted (dance, speaker, sell a car, etc.)? Bring your posters to the College Center and have them stamped. The College Center Office will take the responsibility of posting them on the 20 available campus bulletin boards. There is also a poster printing service run through the College Center where you can have small posters printed at nominal cost.

SCHEDULING MEETINGS AND EVENTS: CC214 [x283]

If your group needs a room to hold a meeting or a facility to put on a show, you may be able to reserve it through the College Center. The College Center is responsible for room and facility reservations in both the College Center building and the Forum. Of course, you must be an official LBCC organization or a small fee will be charged for the use of the facility.

LOCKERS: CC214 [x283]

There are a limited number of on-campus lockers available to handicapped students. Depending on usage, there are sometimes lockers available to non-handicapped students also. Contact the College Center Office at the beginning of each term for further information.



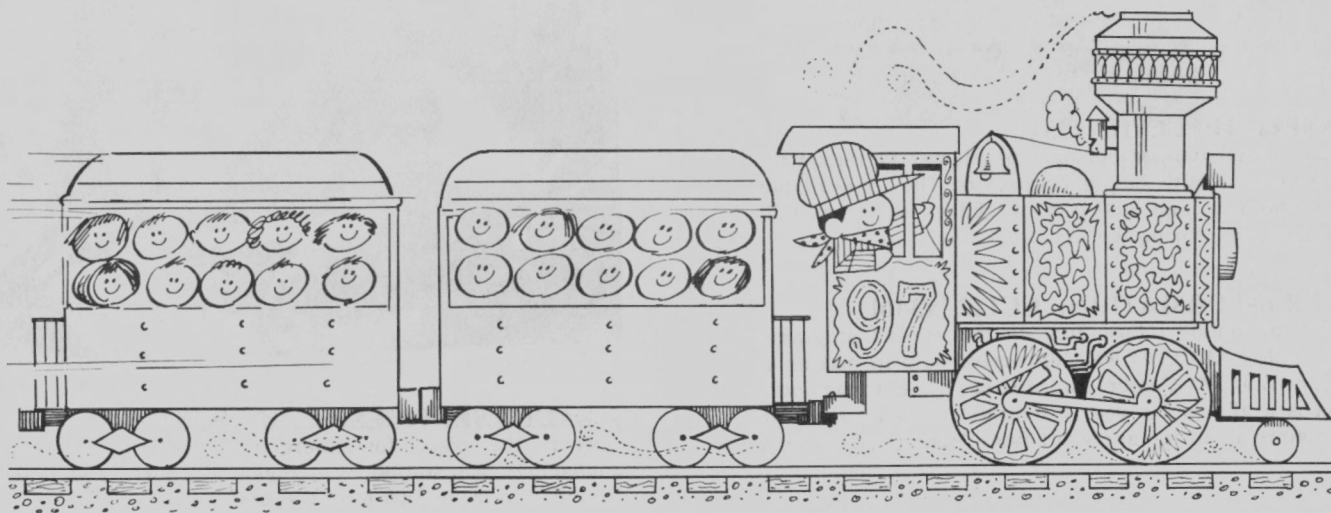
COMMUTER: CC210 [x314]

Every week during fall, winter, and spring terms (except for exam week and vacations) the **Commuter**, a student-managed newspaper, is available with all the news that's fit to print about LBCC. Pick up the paper and read it or write a letter to the editor or, better yet, join the **Commuter** staff as a reporter.

CHANGE: CC214 [x283]

Got a dollar bill or a five or maybe you're lucky enough to have a ten, but you'd really like a few ones and some quarters and dimes? If so, the staff at the College Center window will see that you get the change you need.

Who is television's most durable performer? Answer on page 13.

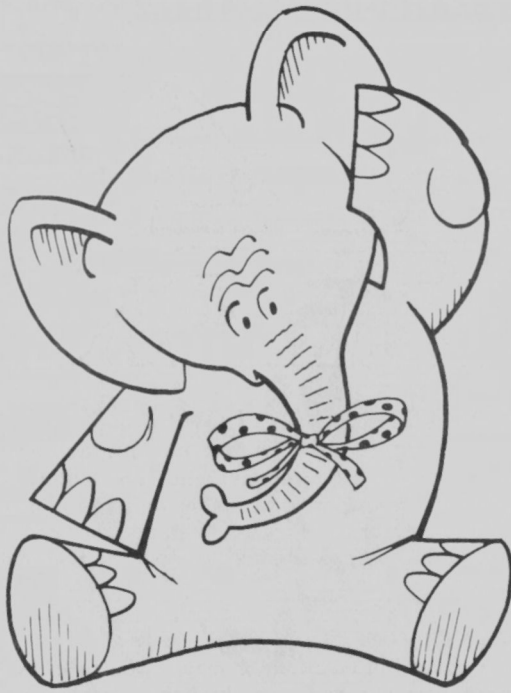


CLUBS AND ORGANIZATIONS: CC214 [x283]

There is a wide variety of LBCC student clubs and organizations from skiing, to rodeo, to nursing, to management, etc. If you'd like to be a member of one of these, contact the Coordinator of Student Activities and he/she will put you in touch with the right people.

It's also relatively simple to form your very own club. Once again, contact the Coordinator of Student Activities for instructions on how this is done. Many faculty and staff are interested in assisting and interacting with student groups. A list of these people is available in the College Center Office. If you're planning on forming your own club this list could be extremely beneficial.

Dr. Frankenstein impressively named him "Adam".
Question on page 10.



GUIDANCE SERVICES: CC110 [x351]

Here's a good place to go with all kinds of problems you might have whether they're academic, vocational, personal, or health.

ACADEMIC ADVISING: CC110 [x351]

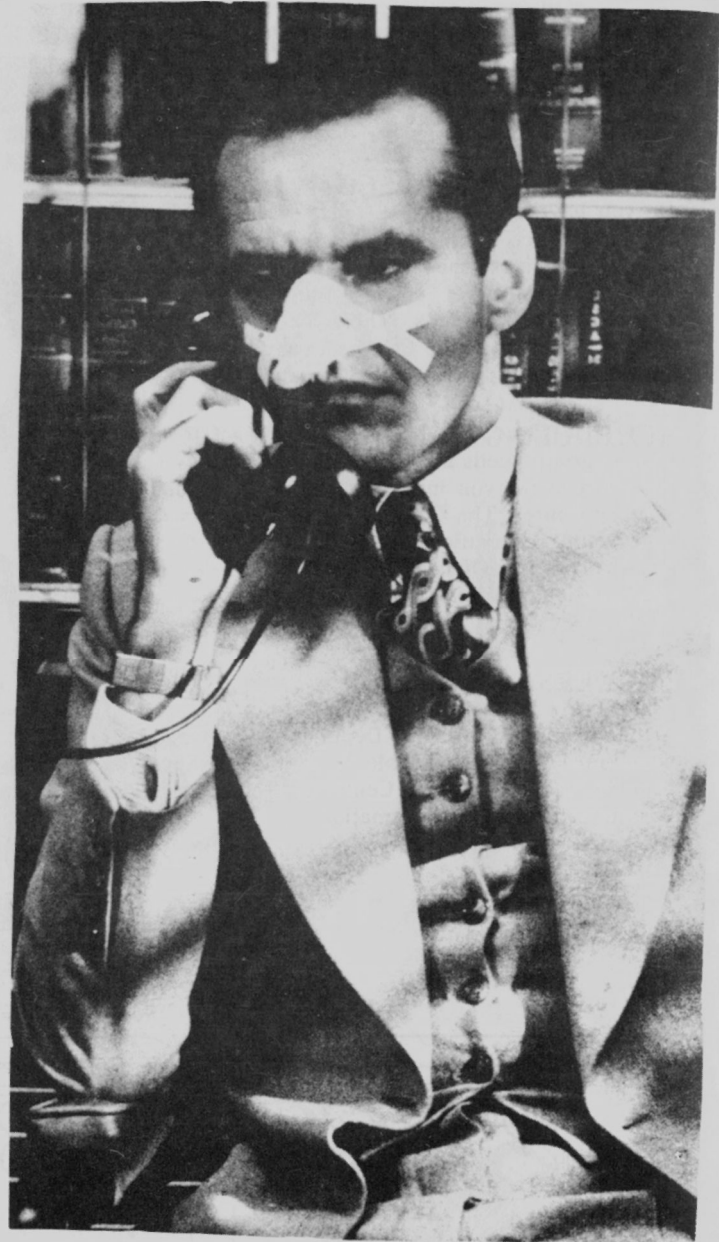
Having difficulty figuring out where you're headed academically and/or vocationally? There are people here to help you. Anyway, if you're a newly enrolled student you'll have an appointment with a professional counselor at the beginning of your studies at LBCC.

COUNSELING: CC110 [x351]

Academic, vocational, or personal problems? Go talk with one of LBCC's friendly, helpful counselors. They're available between 8:00 a.m. and 5:00 p.m. weekdays and from 6:30 p.m. to 8:30 p.m. during the first week of classes.

CAREER INFORMATION: CC112 [x346]

Here you can obtain information on the various programs offered through LBCC as well as receive help in making a career decision. A Career Information System computer terminal is available for your use in selecting a career or learning more about the one you have selected.



HEALTH SERVICES: CC109 [x357]

This is the place for emergency first aid and health counseling. It's staffed by a registered nurse and is open from 8:00 a.m. to 5:00 p.m. weekdays.

HEALTH INSURANCE: CC109 [x357]

The LBCC student health insurance plan might seem expensive to you but it's probably the cheapest insurance you'll ever buy. If you're not covered at work or by your parents or spouse, it's worthwhile.

What is the most common disease in the world? Answer on page 4 .

Harry Lillis (alias Bing Crosby). In 1970 it was estimated that his total global sales totaled 362,000,000 discs. Question on page 3 .



For the last time, this is not the Financial Aids Office!

FINANCIAL AIDS: CC107 [x376]

If you're having difficulty paying the bills and tuition at the same time or maybe you're not a student because you don't feel you can afford it, well then the Financial Aids Office may be able to help you. LBCC does not want you to be prevented from furthering your education because of financial difficulties. Types of financial assistance include:

- State Need Grants
- Supplemental Education Opportunity Grants (SEOG)
- Basic Grants (BEOG)
- National Direct Student Loans (NDSL)
- Guaranteed Student Loans (GSL)
- Emergency Loans
- College Work Study

There are also other special loan, grant, scholarship, and work programs available. For specific information on the above plus other programs, go to the Financial Aids Office.

JOB PLACEMENT: CC119 [x297]

When you've finally graduated from LBCC and you're wondering what to do next, a good place to get help is the Job Placement Office. In addition to job referrals, you can receive assistance on writing a resume and searching for a job.

Part-time and summer employment referrals are also available at the Placement Office.



ADMISSIONS OFFICE: CC108 [x210]

The "Front Door" of Linn-Benton Community College—that's the Admissions and Career Information Center. For general information on course offerings, and admission and graduation requirements; the Admissions Office can assist you.

A plastic I.D. card is issued to every student registering for eight or more credits. Students who register for less than eight credits may also have an I.D. card by requesting it. This card has the student's name, social security number, and birthdate on it and can be used to cash checks, gain admission to special events, check out rec room equipment, etc.

The Admissions and Career Information Center and/or the Registrar's Office can assist you with information on many other areas such as:

- Registration Procedures
- Graduation Requirements
- Tuition and Fees
- Adding and Dropping Classes
- Transcript Requests
- Withdrawal from School
- Grade Problems

As you can see, all of the above items are extremely important and you can find help with any of them in CC108. Information on the above items is also contained at the front of the LBCC catalog.

110 rounds or 7 hours and 19 minutes between Jack Burke and Andy Bowen. It ended in a tie. Question on page 9.



Welcome to the Vet's Office.

The Mathaser, Bayerstrasse 5, Munich, West Germany, where the daily sale reaches 84,470 pints. Question on page 14.

MATH LAB: LRC203 [x293]

You may want to take an LBCC individualized math class or you just need some assistance with your math problems. If so, the Math Lab is the place to go.

STUDY SKILLS CENTER: LRC202 [x395]

The Study Skills Center covers areas such as reading, language arts, specialized tutoring, and improvement of basic study techniques. If you're having trouble, talk to your instructor, a counselor, or just drop by the center and talk to one of the staff members. Many problems can be taken care of with only a few hours work. In any event, problems won't "take care of themselves" and the sooner you are able to get help, the more successful you will be in your studies. The staff of the center has helped many students who might have otherwise not been able to stay in school.

TESTING: CC110 [x351]

Ever take a test that's impossible to fail? If not, you can do it in the Guidance or Developmental Center. The test may explain what types of academic and vocational interests and potentials you have.



Aren't Intramural Sports great?

VETERAN'S OFFICE: CC121 [x266]

If you're a vet, the Veteran's Office is the first place to visit when you come to campus. The people there will be able to inform you of all the benefits you are eligible for and help you avoid unanticipated problems that might arise while pursuing your education at LBCC.

DEVELOPMENTAL LEARNING CENTER: LRC 2nd floor [x395]

If you believe you need help in improving your study skills, reading or math; drop by the Center. The Center helps students plan a better approach to learning. Within the Center you'll find a very competent, friendly staff to help you improve learning skills.

ATHLETICS: AC102 [x311]

There are two varieties of competitive athletics at Linn-Benton: (1) Intercollegiate and (2) Intramural.

If you're into the excitement of intercollegiate competition, the LBCC intercollegiate program for the 1977-78 academic year will include the following activities: Men's and Women's Cross Country, Women's Volleyball, Men's and Women's Basketball, Men's and Women's Track, Coeducational Golf, Baseball, and Men's and Women's Tennis. The people at the Activities Center will be happy to explain the procedure for trying out for the various teams if you're interested.

On a more informal basis, there is a variety of intramural sports and sports clubs available for any student who wants to participate. Every student is eligible to compete plus it's great fun. Contact the Activities Center and/or the College Center Office for further information.

What was the shortest forward pass for a touchdown?
Answer on page 12.

STUDENT GOVERNMENT: CC213 [x226] or 928-4912

Every student that takes credit courses at this school is a member of the Associated Students of Linn-Benton Community College (ASLBCC). Each Spring the ASLBCC (that's you) elects six senators, a president, vice-president, and a business manager plus an additional six senators are elected each fall. If you are a full or part-time student, you are eligible to run for these offices. The students holding these positions act as liaisons between their constituents, the LBCC students, and the faculty, administration, and the LBCC Board of Directors. Student Government exercises a great deal of influence concerning institutional policy formulation and implementation.

If you would like to have more input into how your school is run, develop leadership skills, meet new people, and become involved in interesting projects; then get involved in student government. Your involvement will be both interesting and educational.

In addition, the president, vice-president, and business manager are awarded tuition grants for their involvement in these offices.

If you would like more detailed information on how student government is run, stop by the office (CC213) and talk to some of the officers or ask for a copy of the ASLBCC Constitution and By-laws.

You can also become involved with student government without being an officer. Getting yourself appointed to a committee is simple and gives you the opportunity to voice your concerns on various school related problem areas. Student government committees exist for many purposes including: student advocacy matters, legal problems, complaints and suggestions, youth services, state affairs, community affairs, etc.

Whether you want to be ASLBCC President or a committee member or you just want information about the school or have a complaint or suggestion, go to CC213 and talk to your student government representatives.



I dub thee Student Senator.



Why did the Library cancel its subscription to "Playboy"?

LEARNING RESOURCE CENTER:

1st floor LRC [x392]

Need some learning resources? What the #!?! is a learning resource? A learning resource could be a book, record, reference librarian, camera, tape recorder, map, etc. Many of these are available on the first floor of the LRC. Some of the equipment cannot be utilized without special arrangements.

LIBRARY: LRC102 [x400]

If you're a student at LBCC and aren't familiar with our library, then you're probably missing out on a major source of help in your studies. Go to the library and "check it out". Student library handbooks are available and staff are always willing to spend time helping students learn how to use the materials and services. Even if you don't need other materials now, you'll know where they are and where you can find a quiet place to study.

MEDIA SERVICES: LRC109 [x390]

All projectors, recorders, and various and sundry electronic instructional media equipment are circulated and serviced through the Media Services department. Television facilities include a small studio, cameras, and assorted gear. If you have a presentation or a class project which requires display materials or AV equipment, you can get assistance from Media.

GRAPHIC SERVICES: LRC105 [x246]

Graphics provides LBCC with most of its printing, including many instructional workbooks and manuals which are sold through the Bookstore. The graphic artists, photographer, and typesetter also help provide public relations materials for the school.

What is the longest fight [boxing] on record? Answer on page 7.

The D River in Lincoln City, OR which is 440 feet long at low tide. Question on page 1.



What was the late Boris Karloff's monster name in the 1931 "Frankenstein" movie? Answer on page 5.

COLLEGE COMMITTEES: CC213 [x226]

Would you like more input in the decision making process of LBCC? If so, contact the ASLBCC President (Student Government). The President has been given responsibility for assigning students to College Committees. These Committees serve a variety of purposes and provide students an opportunity to participate in institutional decisions.

Below is a list of these College Committees and a very brief description of their respective functions:

Admissions and Grade Standards; reviews special admission cases, scholarship problems, and can initiate modifications in admissions and grade standards.

Curriculum; approves proposals dealing with development of curricular offerings.

Learning Resource Services; assists in the development of and resource allocation in the LRC.

Bookstore; recommends policy concerning the LBCC Bookstore.

Public Information Advisory; reviews policy related to release of information concerning LBCC.

Safety; concerned with policies related to the safety of LBCC students, faculty, and staff.

Publications; implements policies and procedures for all student publications.

College Center and Activities; advises on the policies and procedures relative to the College Center facilities and LBCC extra and co-curricular activities.

CAMPUS SECURITY: CC125 [x338]

Any questions about parking rules and regulations? Questions concerning security of yourself and your property? Better contact campus security before they have to contact you.

PARKING: CC125 [x338]

Specific questions concerning parking should be directed to Campus Security. However, some general rules to remember are parking is available in lots 1, 2, 3, 4, 5, 6, and 7 with the exception of handicapped spaces. Also keep your speed under 20 mph.

BOOKSTORE: CC111 [x277]

Books, paper, pencils, magazines, manuals, birthday cards, etc. are all available at the LBCC bookstore. If an instructor requires a textbook, you should be able to locate it in the bookstore.

Books returned in new condition accompanied by the cash register receipt will receive full refund within the first two weeks of each term. After the first two weeks they are considered used books. You may sell used books from 1:00 to 4:00 p.m. every Friday or any day of finals week.

Bookstore hours the first two weeks of each term are 8:00 a.m. to 8:30 p.m. Regular hours are 8:00 a.m. to 5:00 p.m. Monday through Thursday with the store closing at 4:30 p.m. on Friday. Its also open from 6:30 to 8:30 p.m. on Tuesday and Wednesday.

CHECK CASHING: CC130 [x334]

So you need some pocket change and all you've got is a couple of checks. Well, if the checks are from a local bank and you've got some identification such as a LBCC I.D. and/or a drivers license then you can cash a check for about \$10.00 at the Business Office Window (CC130).



Welcome to the 1st meeting of the LBCC Committee on Organized Crime.

"Ben Hur" won more "Oscars" [11] in 1959 than any other picture ever has including best picture. Question on page 15.



Above is a typical LBCC Student exercising his due process rights in front of a group of Faculty and Students.

STUDENT RIGHTS, FREEDOMS, RESPONSIBILITIES, AND DUE PROCESS: CC105 [x420]

Every LBCC student has certain rights and freedoms. These rights and freedoms are very similar to those you have as a citizen of the United States. Of course, along with those rights and freedoms go a certain number of responsibilities that can't be overlooked. If you do overlook your responsibilities as an LBCC student and get yourself in hot water, there is a system of due process which has also been outlined by the College and LBCC students. This same system of due process can be used when you feel you have been wronged by an LBCC faculty member or administrator. As mentioned previously, the Dean of Students is the LBCC grievance (due process) specialist. If you have a grievance and feel you have exhausted all other methods of solving the problem, then you should ask the Dean of Students for assistance.

There is a small book available in the Student Government or the Dean of Students Office which outlines all your rights, freedoms, responsibilities, and due process as a LBCC student. If you want a detailed description of the above, go pick one up.

What is the largest living mammal? Answer on page 14.

270 U.S. bushels in 8 hours by Harold Oaks of Hood River, Oregon in 1972. Question on page 12.

HELPFUL PUBLIC SERVICES

Below is a brief list of some of the public services available to everyone including LBCC students. There are many other public and private social agencies available to assist people with their special needs. For a more extensive listing contact the Guidance Center, CC110.

Legal Aid of Linn County

203 W. 1st, Albany 926-3678

Provides advice and referral for many different legal problems.

Sunflower House

128 SW 9th, Corvallis 753-1241

Serves people in need of assistance with medical, emotional, drug, abortion, and legal problems. Also has a 24 hour crisis telephone.

Home Health Services & Family Planning

Court House Annex, Albany 967-3388

2750 NW Harrison, Corvallis 757-6837

Advice and assistance is available on home health care, birth control methods, pregnancy tests, and abortion referral.

Employment Office

332 S. Baker, Albany 926-9483

850 SW 35th, Corvallis 757-4101

If you're looking for a job or think that you're eligible for unemployment compensation this is the office to contact.

Children's Services

121 E. 1st, Albany 926-5571

850 SW 35th, Corvallis 757-4121

Referral and advice concerning day care, foster care, family counseling, special transportation for children, etc. are available here.

Public Welfare

1035 SE 2nd, Albany 926-4852

350 SW 35th, Corvallis 757-4201

If you're in serious trouble financially, need help finding a place to live, have health problems, etc.; then the people in this agency will be able to assist you.

Food Stamps

1035 SE 2nd, Albany 926-4852

850 SW 35th, Corvallis 757-4161

If you're eligible for food stamps, this is a good way to increase your food purchasing dollar.

Car Pooling is Encouraged



Turn right at the LBCC sign.

Two inches from Eddie LeBaron to Bielski in the Dallas vs Washington game on October 9, 1960. Question on page 8 .

Below is the **Greater Albany Shuttle** bus schedule. Its a good system and there's been rumors about a bus system between Albany, Corvallis and LBCC in the future. Keep your fingers crossed.

RED BUS (RED SIGN IN THE WINDOW)

		SOUTHWEST LOOP									
Lv.	City Hall	8:00	9:00	10:05	11:05	12:05	1:05	2:05	3:10	4:10	5:20
	Albany General	8:03	9:03	10:08	11:08	12:08	1:08	2:08	3:13	4:13	5:23
	Prof. Plaza	8:09	9:09	10:14	11:14	12:14	1:14	2:14	3:19	4:19	5:29
	L.B.C.C.					12:19				4:24	
Arr.	City Hall	8:20	9:20	10:25	11:25	12:35	1:25	2:25	3:30	4:40	5:50
		SOUTHEAST LOOP									
Lv.	City Hall	8:21	9:21	10:26	11:26	12:36	1:26	2:26	3:31	4:41	
	Queen & Hill	8:30	9:30	10:34	11:34	12:44	1:34	2:34	3:40	4:50	
	34th & Columbus	8:37	9:37	10:41	11:41	12:51	1:41	2:41	3:47	4:57	
	Fred Meyer	8:45	9:45	10:49	11:49		1:49	2:49	3:55	5:05	
	1st & Main	8:50	9:50	10:55	11:55	12:59	1:55	2:55	4:00	5:10	
Arr.	City Hall	8:55	9:55	11:00	12:00	1:04	2:00	3:00	4:05	5:15	

BLUE BUS (BLUE SIGN IN THE WINDOW)

		SOUTHEAST LOOP									
Lv.	City Hall	7:50	9:00	10:05	11:05	12:05	1:05	2:05	3:20	4:20	5:20
	2nd & Main	7:54	9:04	10:09	11:09	12:09	1:09	2:09	3:24	4:24	5:24
	Fred Meyer	8:00	9:10	10:15	11:15	12:15	1:15	2:15	3:30	4:40	5:30
	34th & Columbus	8:07	9:17	10:22	11:22	12:22	1:22	2:22	3:37	4:37	5:37
	Queen & Hill	8:15	9:25	10:30	11:30	12:30	1:30	2:30	3:45	4:45	5:45
Arr.	City Hall	8:25	9:35	10:40	11:40	12:40	1:40	2:40	3:55	4:55	5:55
		SOUTHWEST LOOP									
Lv.	City Hall	8:26	9:36	10:41	11:41	12:41	1:41	2:41	3:56	4:56	
	Prof. Plaza	8:35	9:45	10:49	11:49	12:49	1:49	2:49	4:04	5:04	
	L.B.C.C.	8:40						2:55			
	Albany General	8:51	9:51	10:56	11:56	12:56	1:56	3:06	4:11	5:11	
Arr.	City Hall	8:55	9:55	11:00	12:00	1:00	2:00	3:10	4:15	5:15	

What is the world's apple picking record? Answer on page 11.

HOW TO LIVE CHEAPLY

If you want to cut down on your living expenses, there are several things you can do. One of them is to use common sense.

FOOD TIPS:

There are many supermarkets wanting your business. Watch the newspaper for their special sales; they're usually held toward the end of the week. If you can buy in bulk quantities, it's usually cheaper. Buy food that comes in reusable containers. It's normally a lot cheaper, and you'll be doing Mother Nature a favor. Making a list and sticking to it is a sure cure for over-spending.

HOUSEHOLD GOODS AND CLOTHING:

When you have to purchase things like clothing, appliances, and furniture; try shopping at thrift shops, bargain barns, swap meets, and other similar places. In most cases, you'll find that whatever you wanted new is much less expensive used. Some other places you can try are army surplus stores, garage sales, school-church-laundromat bulletin boards, and damaged freight stores. The classified section of the newspaper is another valuable resource.

LODGING:

The more roommates you can put up with, the less rent you'll have to pay each month. Of course, when you get six people in a two bedroom apartment that sometimes can get to be a little tedious. Make sure you look carefully and check with all your resources (students, College Center Office, classified ads) before you rent.

BOOKS:

Don't go out and buy new books if you can get away with buying used ones. Make sure that when the latest edition is required for a class that it is different from a less expensive, used older edition.

Usually a couple of weeks before classes start, people begin putting up signs advertising their used books. You can buy books this way or buy the used texts at the Bookstore. However, the number of used books in the campus bookstore is usually limited.

Another angle is to share a book with someone else, borrow the book from someone who has taken the class, use the library's books, or sometimes you can check the book out of the public library.

As you can see, saving dollars just takes a little ingenuity and sometimes a little luck.



I've heard of cutting corners, but this is ridiculous!

Bob Barker acted as host of "Truth or Consequences" for 3,524 consecutive programs. Question on page 5.

The greatest welfare scandal in history was worked by Anthony Moreno on the French Social Security System. He was last reported living in Spain having absquatulated with an estimated \$6,440,000.

WHERE TO GO.....

If you wish to find out about:

What	Where	Ext.	Room
Academic Information	Counseling	351	CC110
Accidents & Injuries	Health Services	351	CC109
Adding Courses	Registration	210	CC108
Admission Information (cont.)	Admissions & Career Guidance Center	346	CC112
Athletics	P.E. & Health Div.	311	AC102
Book Purchasing	Bookstore	277	CC111
Career Information System (cont.)	Admissions & Career Guidance Center	346	CC112
Changing Courses	Registration	210	CC108
College Publications (cont.)	Admissions & Career Information	346	CC112
Cooperative Work Experience	Marv Clemons	297	CC119
Credit Evaluation (cont.)	Admissions & Career Information	346	CC112
Dropping Courses	Registration	210	CC108
Grade Point Average	Registration	210	CC108
Health Problems & Counseling	Health Services	351	CC109
Housing Information (cont.)	College Center Switchboard or College Center	283	CC214
Insurance	Health Services	351	CC109
Jobs, Part-time	Financial Aids	375	CC107
Loans	Financial Aids	375	CC107
Lost and Found	College Center	283	CC214
Make-up Work	Instructor		
Meetings & Conference Rooms	College Center	283	CC214
Non-Credit Courses	Community Education	434	CC106
Parking & Traffic Rules	Security Office	338	CC125
Payment of Tuition	Registration	210	CC108
Personal Problems	Counseling	351	CC110
Refunds	Registration	210	CC108
Scholarships	Financial Aids	375	CC107
Social Activities	College Center	283	CC214
Special Programs for Severely Handicapped	Community Education	434	CC106
Student Government	Student Affairs	226	CC213
Student Rights & Responsibilities	Dean of Students	420	CC105
Study Skills	Developmental Center	395	LRC202
Supplies for Classes	Bookstore	277	CC111
Transfer to Colleges or Universities	Counseling	351	CC110
Transcripts	Registration	210	CC108
Travel Board	Commons		
Tuition Information (cont.)	Registration	210	CC108
(cont.)	Counseling	351	CC110
(cont.)	Admissions & Career	346	CC112
Veteran's Affairs	Vets Office	266	CC119
Vocational Information & Tests	Counseling	351	CC110
Withdrawal from College	Registration	210	CC108

The blue whale. One taken in 1947 measured over 90 feet and its tongue alone weighed 4.73 tons. Question on page 1.1.

Where is the largest beer-selling establishment in the world? Answer on page 8.

ACADEMIC CALENDAR

No handbook could be complete without some sort of calendar. So here's the academic calendar for the '77-'78 school year.

FALL TERM 1977

Registration Begins	August 29
Classes Begin	September 2 ⁶
Last Day to Register	
Students Registering for 10 or More Credits	September 30
Students Registering for 9 or Less Credits	October 14
Last Day to Drop Without a "W"	October 7
Last Day to Add	October 14
Last Day for Refunds	October 28
Veteran's Day Holiday	November 11
Thanksgiving Holiday	November 23 - 25
Last Day to Request P/NP Option	December 9
Last Day to Officially Withdraw	December 9
Final Exams	December 12, 13, 14
Last Day of Fall Term	December 16
Christmas Recess	December 19 - 31

WINTER TERM 1978

Registration Begins	December 5
Classes Begin	January 3
Last Day to Register	
Students Registering for 10 or More Credits	January 6
Students Registering for 9 or Less Credits	January 20
Last Day to Drop Without a "W"	January 13
Last Day to Add	January 20
Last Day for Refunds	February 3
Last Day to Request P/NP Option	March 10
Last Day to Officially Withdraw	March 10
Final Exams	March 13, 14, 15
Last Day of Winter Term	March 17
Spring Recess	March 20 - 24

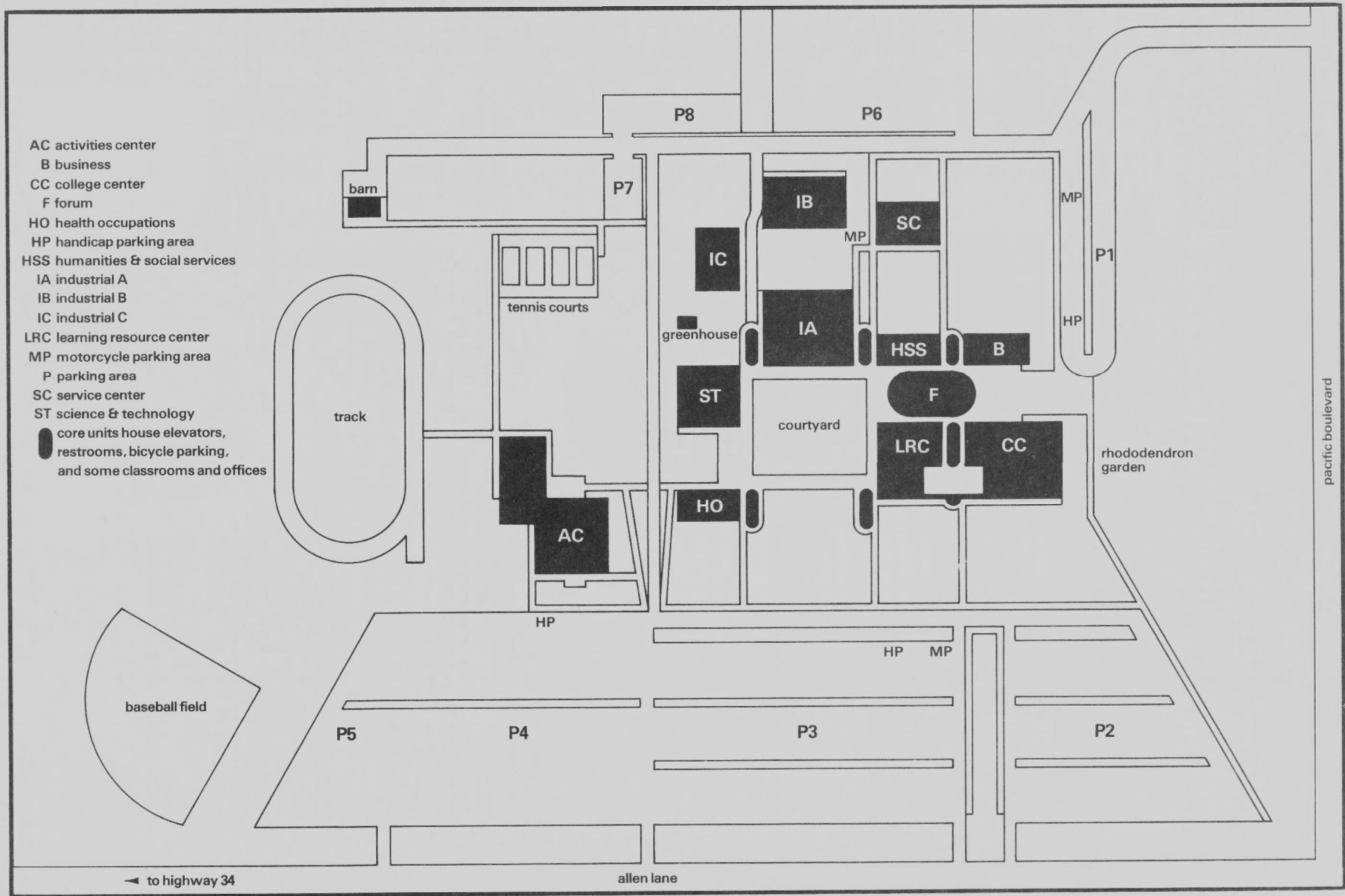
SPRING TERM 1978

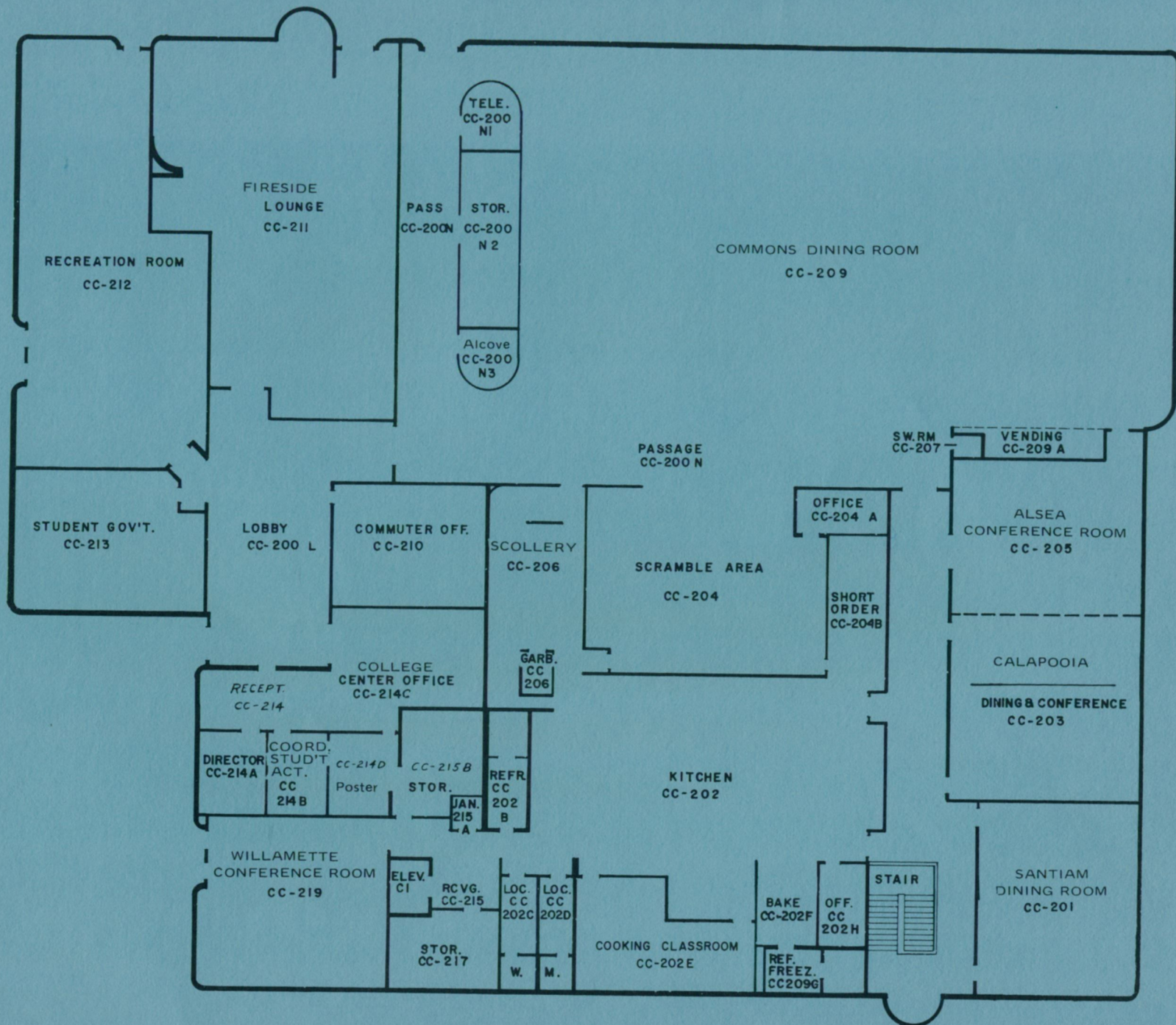
Registration Begins	March 6
Classes Begin	March 27
Last Day to Register	
Students Registering for 10 or More Credits	March 31
Students Registering for 9 or Less Credits	April 14
Last Day to Drop Without a "W"	April 7
Last Day to Add	April 14
Last Day for Refunds	April 28
Memorial Day Holiday	May 29
Last Day to Request P/NP Option	June 2
Last Day to Officially Withdraw	June 2
Final Exams	June 5, 6, 7
Graduation	June 9
Last Day of Spring Term	June 9

SUMMER TERM 1978

Registration Begins	May 29
Classes Begin	June 19
Last Day to Register	
Students Registering for 10 or More Credits	June 23
Students Registering for 9 or Less Credits	July 7
Last Day to Drop Without a "W"	June 30
Independence Day Holiday	July 4
Last Day to Add	July 7
Last Day for Refunds	July 21
Last Day to Request P/NP Option	August 18
Last Day to Officially Withdraw	August 18
Final Exams - Ten Week Session	August 21, 22, 23
Last Day of Summer Term	August 25

\$6,080,000 for "Secretariat", the ninth Triple Crown winner. Question on page 7.





COLLEGE CENTER SECOND FLOOR