

# Commuter

LINN-BENTON COMMUNITY COLLEGE

ALBANY, OREGON 97321

VOLUME 7 NUMBER 11 • JANUARY 14, 1976

## ASLBCC Senate positions open

by Jeff Feyerharm

There are five openings in the ASLBCC Senate this quarter due to resignations and transfers.

Applications are being taken in the Student Government Office for four of the five positions. The fifth position is to be filled by Programming Council.

Applications are on the information table in front of the Student Government Office. They consist of a platform statement, biography and GPA. The applications are being taken until noon, Friday Jan. 16.

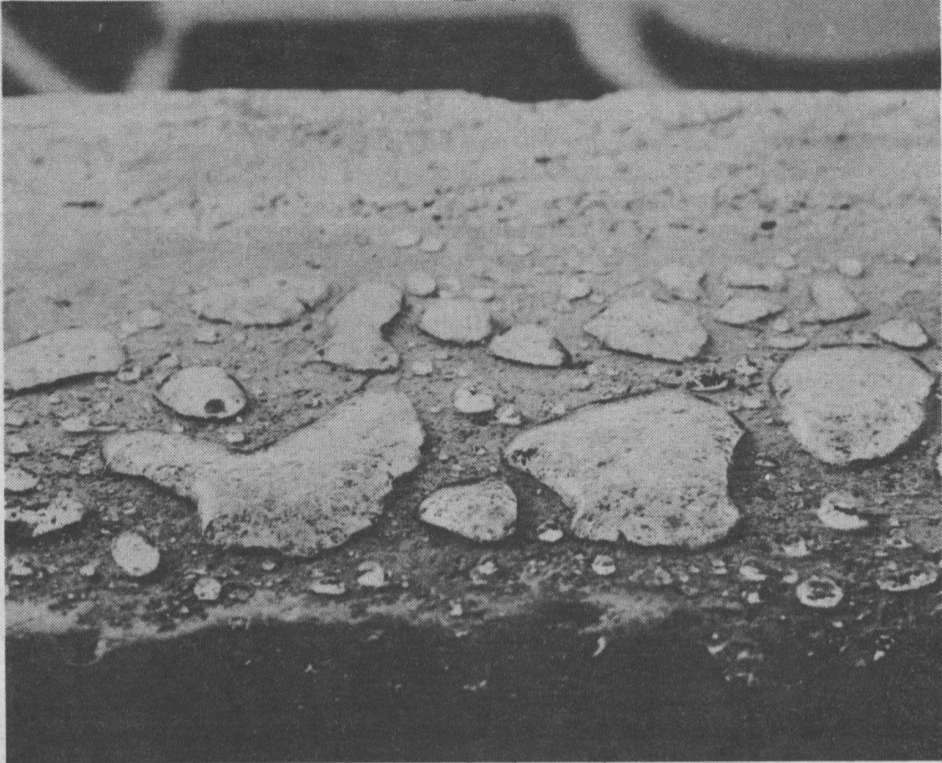
All applicants will be interviewed by the ASLBCC Executive Council, which

will make recommendations to the senate at its regular meeting, for approval or disapproval.

"Usually two to five resign per term," stated Phyllis Williams, president of ASLBCC. "Especially the term after the election."

"A couple senators found out it was work," Williams explained. "One quit school and the others just didn't have time."

The appointed senators would hold office only until spring elections (mid-April) when they would have to run for the offices. □



Dave Alexander

A few drops of Oregon Sunshine found their way to a stairwell ledge at LBCC during the recent storms.

## Tuition increase and budget levy topics of meeting

by Jim Perrone

An 8% increase in tuition fees was part of the proposed LBCC 1976-77 budget totaling \$6.6 million.

The increase in tuition, if approved, will raise the cost per credit hour from \$8.75 to \$9.00. This will generate an additional \$85,000 and reduce the amount asked of the taxpayers in the budget levy election.

The tuition increase was asked for by

Needham to keep student financing at 17% of the total budget. This is about the same as this year's.

A public meeting will be held on Feb. 3, from 5-7 p.m. in the Santiam Room for discussion on the proposed tuition increase.

The proposed budget, which was presented to the Board of Directors last

Thursday at the regular meeting, is 21% higher than last year's budget of \$5.4 million. If accepted and passed by the voters on April 20, it would increase the local property tax rate by 10 to 15 cents.

Depending on the passage of the tuition increase, next year's tax rate could be either \$1.43 or \$1.38 per

\$1,000. This compares with this year's tax rate of \$1.28. It would increase the taxes on a \$30,000 home by about \$3.00.

Work on the budget will begin under the newly appointed chairmanship of Ken Noteboom of Albany. The first meeting will be held this Thursday at the college's Lebanon Center, 1715 Fifth Street. □

### ACCF Budget

## Activities cut; student senate gets 82% increase

by Jeff Feyerharm

What will the incidental money we pay in our tuition be spent on next year? The decision is pending.

During the last week of fall term the ACCF (Activities and Co-Curricular Fund) Budget Committee held two long sessions and came up with a tentative budget for the student activities for the '76-'77 school year.

Only a few cuts in proposed budgets were made, the largest being the entire program for rodeo and the proposed wrestling programs.

Most proposed budgets were higher than this year's amounts and were tentatively passed with little or no cuts. The Programming Council (financial overseer of clubs) asked for a \$1,000 cut in its budget.

The largest increase requested was from Student Government. An 82% increase, from \$5,530 to \$10,415 was tentatively approved. The item of

greatest increase was for Special Projects/Specific Expenses (from \$350 to \$3,500).

"The increase would allow the senate to provide services for students that it cannot do presently due to lack of funds," said ASLBCC President Phyllis Williams.

During the discussion of Intercollegiate Athletics, Steve Mankle, a member of the ACCF Budget Committee and an ASLBCC Senator, submitted a petition with 125 signatures asking for a decrease in the budget for Intercollegiate Athletics in order to provide money for other programs. However the petition seemed to have little affect, as most Intercollegiate Athletics were tentatively passed. The greatest controversy was concerned with the gymnastic's budget for travel expenses (the gymnastic's budget was tentatively approved).

The next step in deciding the ACCF budget will take place tomorrow, Jan. 15, from noon to 1 p.m. in the Willamette Room. Bob Miller, director of College Center and Student Activities will submit the proposed balanced budget to the ACCF Budget Committee. The ACCF Budget Committee is advisory to Miller, and he has received its proposed budget and balanced it since the last meeting.

To balance the budget the revenue available for next year was first determined. This year's total revenue is \$115,000. Next year's is expected to be \$130,833, with increases coming in all areas. The largest increase is from the Bookstore, jumping from \$15,288 to \$28,000 next year. Enrollment revenue is expected to increase from \$76,012 to \$85,133.

Miller changed only a few things on the budget to balance it. He added

rodeo, stating, "I would like to try to continue rodeo, we are here to offer a variety of activities for students."

Miller also added \$500 to Programming Council's budget bringing its decrease to \$500.

As it stands now, the proposed budget is 3% over the expected revenue. Either the budget will be cut or the revenue increased 3%. However, the possible reserves left in the budget from this year have not been taken into account and this amount could cover the 3% difference.

After approval of the budget by the ACCF Budget Committee it must be approved by the ASLBCC Senate and two days of public hearings must be held on it. "Hardly anyone comes to the hearings unless they are affected adversely by something in the budget," said Miller. □

# EDITORIAL

by Jeff Feyerharm

As the new editor of the *Commuter*, I would like to voice my views on what the *Commuter* should and should not be.

First, I feel it should be a responsible and fair paper. Responsible to the readers who are mostly students at LBCC, and fair to all factions and persons involved with or covered by the *Commuter*.

Second, I feel the *Commuter* should be an educator of the school and community as well. To do this we must enter into investigative reporting and report on controversial subjects.

I believe the *Commuter* cannot exist as a source of information if it lowers itself to being simply a publicity paper for the administration.

Under my editorship, the *Commuter* will primarily cover campus news. However, there is a place for local, state and national news, all of which have an affect on the students here at LBCC.

I feel it is extremely important to include the writings and opinions of others in the *Commuter*. Everyone is encouraged to participate in the outcome of this paper.

As in the past, all letters to the editor will be printed, provided they are not overly lengthy, libelous or profane.

"I believe the *Commuter* should be an educator of the school and community as well. To do this we must enter into investigative reporting and report on controversial subjects."

Students are encouraged to write freelance articles and articles assigned by our editorial staff.

Poetry and humor articles will be accepted depending on length and quality.

Artwork is needed in the form of cartoons or graphics.

If you have any questions about participating in the outcome of the *Commuter* stop in our office and we will be glad to help.

Now that I have taken space to explain what I think the *Commuter* should be, I hope you will let me know what you feel it should be. □

## Review

### Tom and Theresa draw full-house

by John Bickers

Tom and Theresa, "contemporary folk artists," however you may interpret that, along with Gary Sanders on bass and Jerry Gates on drums (and train whistle) entertained students in the Alsea/Calapooia Room last Friday in Chautauqua.

They sang about many things in a wide perspective of human existence ("We're trying to touch everyone," commented Theresa).

"Carry Me Back," a song about their returning to and settling down in Oregon is the title cut of their newest album, released recently on the Orygun label, recorded in Eugene.

Tom and Theresa have been around this area for about five years and now are settled in Corvallis.

"We like Joni Mitchell," said Theresa, just before they did a song written by Joni, "Yellow Taxi," ("...they paved paradise and put up a parking lot...").

Tom and Theresa, currently doing Sunday nights at Nendell's in Corvallis, have played many places around the valley, among them a place called PJ's 1890 (since torn down to be made a bank parking lot).

There was standing room only

throughout the performance, which is impressive when you have to compete with Marine Corps films and the jukebox in the Commons.

Other songs they did included songs about Oregon, a train robbing (*Glendale Train* recorded by the New Riders of the Purple Sage), and an anti-union song called *A Cold Tattoo* ("We are kind of anti-union musicians ourselves.") to list a few.

They are married and have a four-year-old son, Joshua. Theresa has a beautiful, high-ranged voice with an "Okie" flavor that flows through in all the right places. Not considered the lead singer, she is, however, the domineering vocalist. Tom is a fine singer and versatile guitarist with a steady leading quality. He keeps the performance rolling and entertaining, even during occasional tune-up problems.

"Crabgrass" highlighted their performance—a play on Bluegrass (they call it Crabgrass "so we don't offend Bluegrass musicians"). It was done with fine instrumental power, featuring mostly banjo licks by Tom. The back-up music was professionally done.

Tom and Theresa have two albums out so far—"In the Meantime" and their most recent, "Carry Me Back." □

## CHIPPED BEEF:

### the veterans' voice

by Bob Lincoln

To the new Vets coming in and to the old ones who have decided to stay, welcome to LBCC. The Veterans Administration is here to help you with your problems, and answer your questions. Anytime you feel like you aren't satisfied with your check, your courses, your major or you just want to rap, come on in.

Things you should know:

If at the end of winter term, 1976, you do not complete and get a grade in the classes for which you registered, your V.A. benefits will be dropped accordingly. In other words, you cannot be paid for "W" or "INC."

The Veterans office is located in CC 121, near the registration windows. Drop by and say hello.

If you drop below your pay-rate credit load, come by the Vets office and tell someone. If you have married, divorced or added another mouth to feed, stop by. If you have moved, tell us so your check will move with you. If in doubt, stop in and tell us your story. We can't help you unless you keep us informed.

#### VETERANS ASSOCIATION

The lot of the Veterans Association has improved considerably since the beginning of fall term. We have gone from wretched poverty to just plain poverty. As of Jan. 5, we have hoarded \$264.20. This money is used to set up an "emergency loan fund" for our members.

Any member of the LBCC-V.A. may apply for and receive an emergency cash loan any time they can show urgent need for the money. No red tape, piles of forms to fill out or endless interviews, just people helping people. We build this fund \$1 a quarter membership fee and from activities such as the concession stand in downtown Albany on Veterans Day. We need your help to make money for you. Nobody gets a cut on anything. We are not a red tape generating bureaucracy. We are not a military organization. We are not a

social club. We exist for the purpose of helping our members. Any Vets interested, contact the Vets office, Bob Warnick or Bob Lincoln.

#### HAPPENINGS

The Vets Association is sponsoring two speakers: Frank Wilkinson, executive director of the National Committee Against Repressive Legislation. He will speak on Jan. 14 in F 104 from 10 to 11:30 a.m. His topic will be Senate Bill 1. Wilkinson is very well informed and I urge everyone to come and hear him speak. A question and answer period will follow his speech.

Jim Weaver, United States Congressman. Are you tired of seeing government abusive and unresponsive? Well, this is your chance to let someone know of your frustrations. He will be speaking Jan. 16, in F 104 from 11-12 noon. His topic will most likely be current events. A question and answer period will follow his speech. □

## LETTER

Garbage cans  
need food too!

To the *Commuter*:

There are ten million new students here at LBCC. Great, welcome to all of you. May I take this occasion to remind everyone that the campus has available a multitude of hungry garbage containers. There are no rules against feeding them. Let's remember as winter term commences, that we are what we project—be it pride in our institution—or disrespect for our environment. Thanks & welcome,  
Martin B. Altizer

The *Commuter* is the weekly newspaper of the students of Linn-Benton Community College. Opinions expressed in the *Commuter* do not necessarily reflect those of the LBCC administration, faculty, or the Associated Students of LBCC. Correspondence should be addressed to the *Commuter* Linn-Benton Community College, 6500 S.W. Pacific Blvd., Albany, Oregon 97321. The telephone number is (503) 928-2361, ext. 439.

# Commuter

VOLUME 7 NUMBER 11

JANUARY 14, 1976

editor Jeff Feyerharm □ business manager Vic Arundel □ production manager Jerry Marmon □ managing editor Judie Engel □ layout editor Linda Tucker □ photo editor Bruce LeRoux □ sports editor Bill Lanham □ typesetter and copy editor Evelyn Leslie □ assistant photo editor Dave Alexander □ reporters Rex Bush, Steve Hagstrom, John Miller, Gary Randolph, Lucille Ingram, Bob Myers, Denise Olson, David Gosser, Joan Murdock, Jim Gray, T.R. Gregg, Jim Perrone, John Bickers □ photographer Ted Foulke □ editing staff Bill Garren, Nick McWilliams, Sue Storm, Mike Blackshear □ production staff Bob Broadwater, Carrie Brown, Norma Magedanz, Dennis Edgerly, Lenard Nipp, Howard Walker, Julie Winterstein, Joan Murdock □ office manager Fred Southwick □ assistant office manager Gary Randolph □

It is the intent of the *Commuter* to be a newspaper that is representative of the campus community. We encourage participation through letters to the editor, freelance articles, artwork and photos, suggestions or comments. All written submissions should be typed, double-spaced and signed by the contributor.

# Miscellany

## Magic show

"The Virgil and Julie Show" will take place in the Forum at 8 p.m. Friday. The show is renowned worldwide for its presentation of magic and illusion. Virgil and Julie have performed in such far-away places as Calcutta, India, and London, England. The evening will include a series of features from magnificent masterpieces of illusion to demonstrations of extrasensory perception and hypnotism. □

## National Guard on campus

The Albany National Guard will have a booth set up in the College Center lobby from 10 a.m. to 3 p.m. today. □

## Biology lab

The General Biology course has added a new lab section from 3-5 p.m. on Mondays in room ST 204. The course grew from 72 to 96 people creating a need for a new section. Interested students should register right away. □

## LBCC hosts blood drive

The Red Cross is having a blood drive this Thursday at LBCC. The drive will last from 12-4 p.m. and will be in the Alsea Room. □

## Graphic art on display

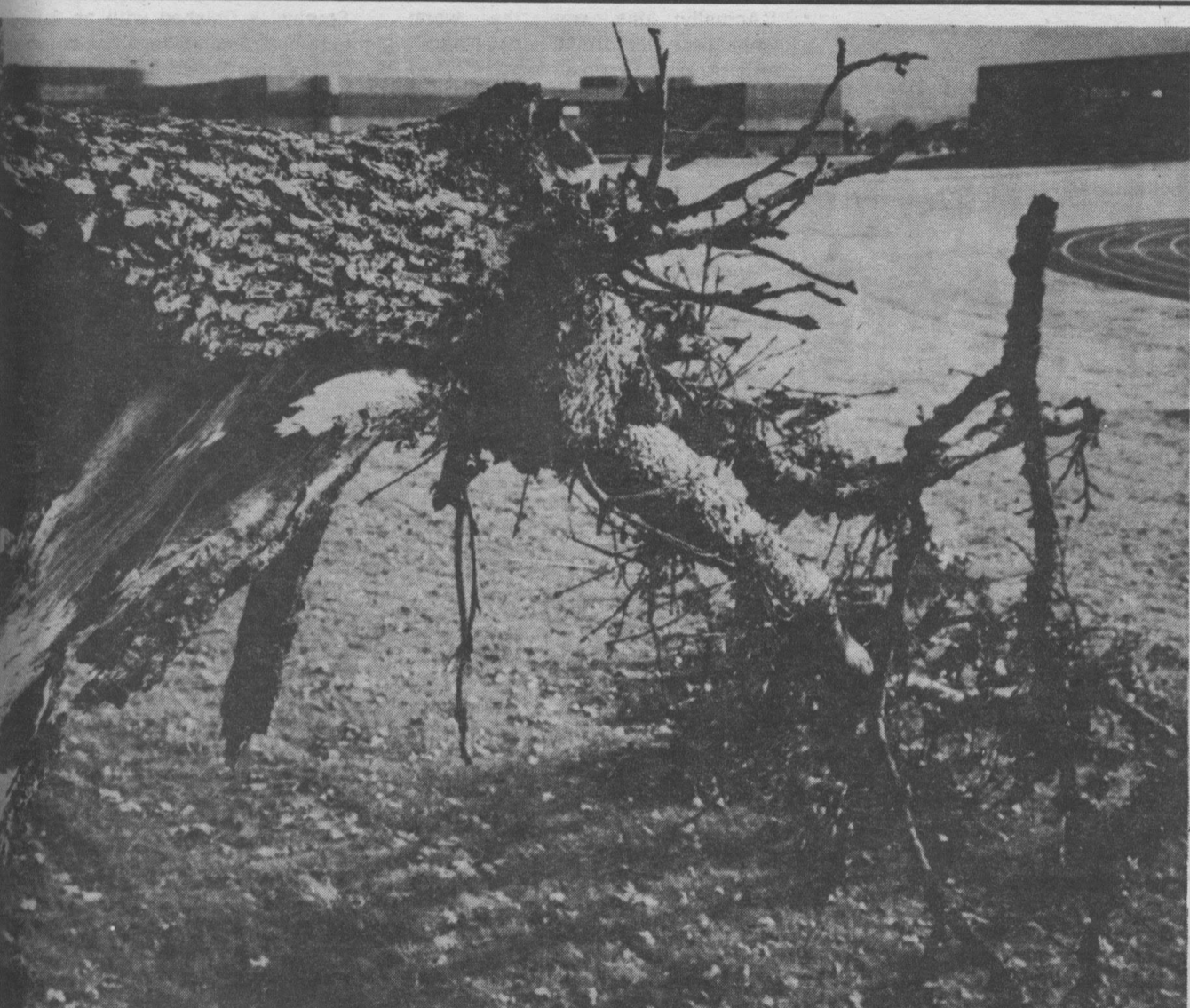
Prints by De Matties are being shown at LBCC from Jan. 3 to Jan. 29. De Matties is assistant of art, teaching printing and drawing at Arizona State University. His prints are represented in numerous private and public collections including the Library of Congress. The prints are being shown in the College Center. □

## Pacific for sale

The Pacific, a literary magazine produced by Linn-Benton's Creative Writers Club is now on sale in the campus Bookstore. □

## Womens group meeting

A new women's group will meet for the first time today at noon in CC 110c. Organized by counselor aide Judy Keith, the group is open to all women on campus—students, faculty, staff and administration. "Our purpose is to explore what it means to be a woman at LBCC," Keith explained. □



High winds took its toll on a tree by the Linn-Benton track leaving a twisted and mangled limb.

## Senate meet

by Jim Perrone

No smoking areas and a deadline to file petitions for senate seats were on this week's Associated Students of LBCC's agenda.

Senators in last Monday's meeting took up an issue that could generate some heat. In an effort to cut down on the pollution caused by smokers, senators heard plans to designate space in both the Commons and the Fireside Room as "No Smoking" areas.

The "smoking" problem was introduced to the senate by Judy Green, ASLBCC adviser, and supported by Bob Miller, director of Student Activities. Present plans are to have the signs installed some time this week.

In the matter of senate petitions, the senate heard from ASLBCC President Phyllis Williams. "Remind everyone you can," she said, "that if they are interested in a senate appointment, that a petition must be filed with the senate office."

Student Senator Sparky Varner reported on the progress to date on the upcoming MS (multiple Sclerosis) drive.

Varner also reported on the progress of the budget election campaign for LBCC. He would like some help in identifying 10,500 yes votes. □

**LEBANON**  
**PEDAL PUSHERS**  
Sales, Service & Repairs

"RALEIGH: the quality bike" Sting-Rays, Unicycles, Skateboards Adult 3-Wheelers and Trikes. Phone 258-2343 70'E. Ash

Dave Alexander

## Calendar

<p>WEDNESDAY, JANUARY 14- QUI CAMPUS TOURNAMENT □ BASKETBALL: LBCC vs UMPQUA, 7:30 p.m., here □ JAZZ NIGHT, LBCC Food Services, 5:30-7 p.m. □ MUSIC FOLLIES, 9 a.m.-9 p.m., Fireside Rm. □ CHRISTIANS ON CAMPUS, 12-1 p.m., H 211 □</p>	<p>SATURDAY, JANUARY 17- GYMNASTICS: LBCC at U of O □</p> <p>SUNDAY, JANUARY 18- NUTHIN □</p>
<p>THURSDAY, JANUARY 15- QUI CAMPUS TOURNAMENT □ BOWLING: LBCC vs OCE, there, 3:30 □ MUSIC FOLLIES, 9 a.m.-9 p.m., Fireside Rm. □ RED CROSS BLOOD DRIVE, 12-4 p.m., Alsea Rm. □</p>	<p>MONDAY, JANUARY 19- JAZZ BAND CONCERT* 7-10 p.m., Forum □ STUDENT GOVERNMENT, 4-6 p.m., Alsea Rm. □</p>
<p>FRIDAY, JANUARY 16- QUI CAMPUS TOURNAMENT □ BASKETBALL: LBCC vs BLUE MOUNTAIN, 8:30 p.m., here □ MAGIC &amp; JULIE SHOW, Magic and Illusion, 8 p.m., Forum, 8 p.m. □ MUSIC FOLLIES, 9 a.m.-9 p.m., Fireside Rm. □ CHRISTIANS ON CAMPUS, 12-1, H 211 □</p>	<p>TUESDAY, JANUARY 20- PROGRAMMING COUNCIL, 12-1 p.m. H 211 □ CHRISTIANS ON CAMPUS, 12-1, H 211 □</p>

Looney Tunes

**Everyday low prices**

We have incense, t-shirts, posters and smoking accessories.

Albany's only record store.

"Give the gift of music."


**ON SALE!**

**BOB DYLAN—Mr. Rolling Thunder His New Album**

\$4.89 LPS

"DESIRE" \$5.75 8 TRACK

\$5.98 CASSETTE



Records  
Tapes &  
Cassettes

136 W. 1st St., between the bridges  
in downtown Albany.

Open 12 to 8 Mon.-Sat. **PH. 928-4008**

# Cast announced for play

by Judie Engel

Director Stephen Rossberg has announced the cast for the LBCC winter term productions of *Cinderella*, along with four short foreign folk tales.

The productions promise to be a special delight for children with all the plays written as comedy.

Five women and four men will play the parts of 22 characters. Those cast in *Cinderella* are: Cindy Cutts as Cinderella; Michael Cooley as the Stepfather; Judy Hecht plays the Chorus; Ann Marie West as the Philosopher; Nancy Looman as the Ugly Stepsister #1; Jan Pierce as the Ugly Stepsister #2;

Wendell Archer as Friend and Charlie Boice as the Prince. Lance Davenport has several roles in the folk tales, as do those in the cast of *Cinderella*.

Cheryl Corder is stage manager for the shows.

Written by Andrew Gale, this new version of *Cinderella* is quite different from most fairy tales. The music was written by Gary Ruppert who will also accompany on the piano.

The folk tales were adapted to play form by Rossberg.

Production dates are Feb. 12 and 13, with two matinees on the 14th. □

Linn-Benton Community College  
6500 S.W. Pacific Blvd.  
Albany, Oregon 97321

Non-Profit Org.  
U.S. Postage  
**PAID**  
Albany, Ore.  
Permit No. 41

## Tiva-tees

### Pizza night

FOOD SERVICES  
Wednesday, Jan. 14 from 5-7:30 p.m. Bring a friend and an appetite.

### Magic show

Friday, Jan. 16 at 8 p.m. in the Main Forum.  
Virgil & Julie, illusionist and magic show from Broadway and CBS.

### Programming Council

MEETING will be held Tuesday, Jan. 20 in the Willamette Room from 12-1 p.m.

### Dance

Will be held Friday night, Jan. 23 9-12 p.m. Stay tuned for more information.

### Chautauqua

We're open all this week serving freshly ground coffee in the Calapooia Room. Stop in and try some at 10¢ a cup. □

### NFL follies

Bumbles and fumbles of NFL Football  
*Chicken Little* starring George Segal

Showing in the Fireside Room continuously, Monday-Friday, Jan. 11-16

### Congressman visits LBCC

U.S. Congressman Jim Weaver will speaking and answering questions Jan. 16 in F 104 from 11-noon.

### ACUI Campus tourney

Foos ball, billiards, table tennis and chess. For more information check at College Center office or Recreation Room.

### Speaker on Senate Bill 1

Frank Wilkinson will speak in the Main Forum from 10-11:30 a.m. on Wednesday, Jan. 14. Public is invited.

## LBCC gymnasts excel in meet

by Bill Lanham

"Actually this was the worst [gymnastics] meet the kids have had," Coach Arlene Crosman said. "They were rusty from the Christmas break."

LBCC had been involved in an earlier meet, at the beginning of December.

"In the December meet we looked superb for so early," Crosman explained. "We just haven't improved that much from then."

"We hadn't practiced for two weeks before the meet," Donna Southwick said of the latest competition.

Looking ahead, Crosman sees a successful season in store for the LBCC girls.

According to Crosman, Joy Peterson is looking good in the vault and unevens; but, like her other teammates, she must get in shape from the layoff.

Debbie Bell did nothing but the vault in high school. This year Crosman has her in all of the events.

"We're trying to work her into the bars," Crosman said of Bell.

Jan. 6th the LBCC Women's Gymnastics team hosted a three-way competition with OCE and OSU.

There was no team score kept, but the LBCC team showed that they are to be reckoned with in Oregon college gymnastics.

Donna Southwick led the Linn-Benton team, sweeping all events and taking a first place in the all-around competition.

Southwick finished with an 8.60 on the balance beam (on a scale of ten) 7.60 on the uneven bars, 8.55 on vaulting and 8.40 from the floor exercise. Her total scores for the all-around added up to 33.65. Her closest opponent was Carole Hennessy from OCE who finished with 26.05.

Joy Peterson and Debbie Bell also scored in the all-around with Bell totaling 18.90, and Peterson collecting 23.65. The fourth member of the team Linda Shultz, didn't compete in the all-around. Her best score came in the floor exercise with a 7.0.

The mainstay for this year's team will be Donna Southwick. As of the Jan. 6 meet she was undefeated.

"Donna is going to be tough to beat this year," Crosman added.

Saturday, Jan. 17, the team will face their strongest challenge when LBCC will meet the University of Oregon in Eugene.

Many of the U of O's girls are Olympic hopefuls and have been training at the "academy" located in Eugene.

One of the U of O's gymnasts, Wendy Halberg, will be the biggest threat.

"She has been in three national championship meets," Crosman said. "It will be a good meet, a very good meet!" □

## CROSS COUNTRY SKIS

### AND EQUIPMENT

- RENT 'EM
- BUY 'EM

PHONE 928-2143  
**BIKE & HIKE Center**  
118 W. 1st Downtown Albany



## Red TAG Sale!

January 16th thru 24th  
10% OFF on antiques and jewelry supplies.  
Red tagged items only.

See us and SAVE!  
ALLEGRO 120 W. 1st St.  
in Albany Waterbed.

# CLASSIFIED

### ANNOUNCEMENTS

Steve:  
In response to your ad in the Dec. 12th issue of the *Commuter*; Contact Doug McLeod.

### FOR SALE

FOR SALE 1973 SUZUKI TM 125, never raced, special rims. Best offer call 928-8184.

FOR SALE: Antique secretary desk. Late 1800's or early 1900's. \$100. Phone 752-1318.

FOR SALE—1970 VOLVO, 4 dr., 4 cyl., auto., good economic value. Call between 3 p.m. and 9 p.m. 928-6106 ask for Kris.

FOR SALE: Two 735 x 14 studded snow tires—\$16. Call Anne in the Purchasing Office, Extension 373, or 928-8253 after 5:30 p.m.

FOR SALE: King-size waterbed and frame \$50 or offer. Call 752-3208. Keep trying.

65 Mustang 289, 3 spd., 10 in. chromes in back. \$650 or trade for El Camino. Leave a message with Pat Wilson or call 928-6962 or 928-4352.

FOR SALE 1973 CL 350 Show room condition crash bar, sissy bar, low mileage. \$750 or best. 928-8184.

FOR SALE: '49 Chev., 4 door, 6 cyl., 3 spd. Straight body. \$100. Contact Steve in Food Services.

71 Harley-Davidson. 10 in. over front end. New paint, motor and transmission. Best offer over \$1,600. 2040 S. Walnut St., Albany.

### WANTED

WANTED: Calico kittens. Delores Young. 926-9743.

Ride needed from Corvallis (near OSU) Monday through Thursday in time for class at noon. Call Dick at 754-3621, mornings. Leave a message in the afternoon. Will help pay gas.

WANTED: American Revolution. Anytime, anyplace. People NOT interested in Freedom need not apply. Further information? Contact Bob Lincoln, Vet's Association, Ext. 266.

### HELP WANTED

FURNITURE BUILDER NEEDED NOW! Experienced only for part-time work in furniture manufacturing company. May turn in to full-time position for right person. Call 928-2621 for interview appointment.

### FREEBEEES

Christian mother will care for your child. Daytime. Across from LBCC campus. Call 926-0576.

TOY COLLIE, female. Three years old. Border Collie—Shepard cross, 2 yrs. old. Both good with children and are good watch dogs. Call 491-3854, after 4 p.m. Ask for Beth.

**CLASSIFIED ADS FREE FOR STUDENTS and STAFF**  
(Non-commercial and No/cost employment only!)