



Annual Report

**Linn-Benton
Community College
Foundation**

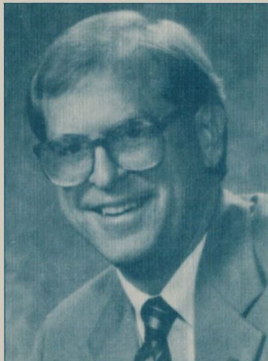
January 27, 1993

Institutional development is a systematic effort to link the mission of the college with the constituencies who are in a position to substantially support that mission. Mostly the links are intangible and unknown until the development effort reveals their existence and the benefits to be gained on both sides. Development is part of an overall institutional marketing process and is a clear expression of shared faith in the direction, ideals, products, and administration of the institution. Usual constituencies of a college include: alumni, business & industry, foundations, the public, and government. A sound development program is an exchange of value, a bargain between the college and its supporters.

Letter from the Presidents

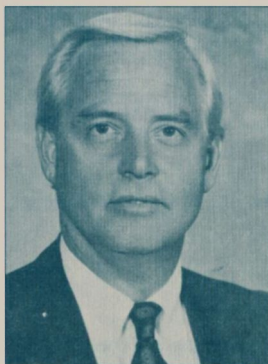
In its twenty-five
years of service,
Linn-Benton

Community College has played an important, often life-changing role in the lives of the more than 250,000 students who have enrolled. We are proud of this record of caring and dedicated service to many, many students who might not have otherwise had an opportunity for post-secondary education. We are proud also of this record of service to our district. This is a wonderful community in which to live, raise families and to work. The college is an integral part of the community and has contributed significantly to its livability.



Jon Carnahan

LBCC is comprehensive in its vision and purpose. The college provides training to enable students to enter the workforce and earn a living; the college provides programs that allow students to go on in higher education to pursue other careers; the college provides training for adults in basic skills; and the college is a fountain of personal self-improvement information and skills. In addition, the college is a leader and a resource in the economic development of the region.



Doug Sweetland

Institutions, like individuals, have personalities that guide the way they function and provide the atmosphere for their service. Arising from its close linkages with the area, and the professional dedication of its staff over time, LBCC is well regarded for quality instruction, caring teachers, comprehensive curriculum, and efficient delivery of services. The college has earned a reputation statewide as responsible, very prudent, and accountable. We like that personality and think that our priority should continue to be *giving the gift that lasts a lifetime - the gift of education.*

The first annual fund-raising campaign has been extremely gratifying as so many members of the community have stepped forward with generous donations. We have often received verbal compliments regarding the

dedication of the college's quality staff and all they have done for our students. When individuals make cash contributions to help further the college's goals, we have very tangible expressions of the high regard that individuals have for the college and its work. The contributors understand that providing quality, breadth and responsiveness does cost sizable dollars even for a college as efficient and prudent as LBCC.

More than half of LBCC students need financial aid to make an education possible in their lives. The edge of excellence costs more than the usual sources of college funding can support. The Foundation plays a key role in providing scholarship and loan assistance for those in need and in providing that edge of excellence not possible without special funding.

We are very pleased to be working together to support students and programs at the college.

This report to the community highlights some of the activities and role of the LBCC Foundation. Though in existence for twenty years, the Foundation recently has emerged with new vigor and a renewed sense of purpose. The Foundation believes strongly in the mission of Linn-Benton Community college and wants to provide that extra support necessary to assure student access and institutional excellence. Join with us in supporting the Foundation so that our investment in people will extend beyond our lives and touch tomorrow.

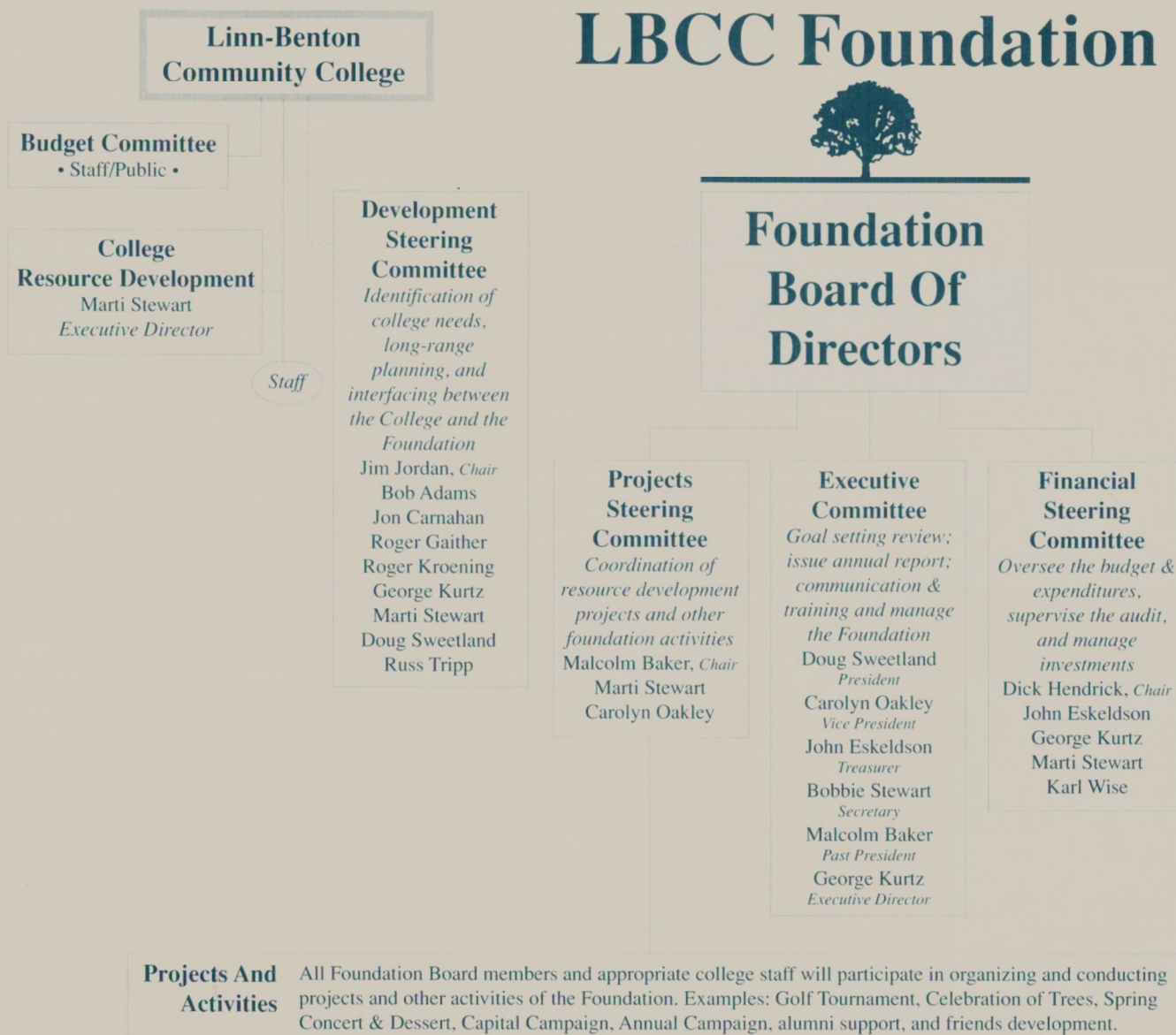
Sincerely,

Jon Carnahan
President,
Linn-Benton Community College

Doug Sweetland
President,
Linn-Benton Community College Foundation

Chart Of Organization

LBCC Foundation



The 1991-92 Foundation Board Of Trustees

Doug Sweetland (President)
 Carolyn Oakley (*Vice-President*)
 Bobbie Stewart (*Secretary*)
 John Eskeldson (*Treasurer*)
 Dr. Robert Adams
 Malcolm Baker
 Ray Barrett
 John Buchner
 Jim Ferguson

Herb Hammond
 Dick Hendrick
 Jim Jordan
 Roger Kroening
 Jim Richards
 Russ Tripp
 Art Vosberg
 Karl Wise

Ex-Officio Trustees

Jon Carnahan
 George Kurtz
 Marti Stewart
 Roger Gaither
 Sharon Abernathy
 Mike Patrick
 Dee Deems
 Bill Siebler

Foundation In Review

The Foundation is a non-profit, IRS 501(c)(3) corporation formed as the vehicle to accept and manage gifts and donations for the betterment of the college and its students and to provide the appropriate tax advantage for the donor.

Formation

The Foundation was formed in 1972, just five years following the establishment of the college itself. The founding Board of Trustees envisioned that private individuals and organizations would provide resources to support students, programs and services, and capital that would not otherwise be available.

Purpose

The Foundation is dedicated to advancing and promoting excellence in the interests and development of Linn-Benton Community College. The Foundation provides a means to support projects and programs which are beyond the scope of the college general fund. The Foundation Board of Trustees is organized to lead, raise, manage, invest, and account for the assets of the Foundation. The Foundation and its Board actively solicits and accepts gifts in support of the college.

Roles

Over the years, the Foundation has received donations in a variety of ways which help to support scholarships, program enhancement, emergency loans, and more. Any and all donations, whether undesignated or designated for a specific fund or program are more than welcome and will help reach forward to success.

An important role of the Foundation has been to serve as the vehicle for Agency Scholarship accounts which allow donors to support activities and students according to criteria established by the donors. Many memorials have also provided categorical support for deserving students over the years.

Today

The purpose remains essentially unchanged today. The IRS 501 (c)(3) non-profit corporation was formed as the vehicle to accept and manage gifts and donations for the betterment of the college and its students and provide the appropriate tax advantage for the donors.

Development

The Foundation has grown and matured over its twenty years with the support and leadership of outstanding volunteer community members constituting the twenty-six member Foundation Board. The responsible stewardship of Foundation resources has been strengthened with the adoption of new Bylaws, which includes a new organizational structure, a new Investment Policy, and strong internal controls and audits.



Foundation Activities

Each September since 1989 the Foundation organizes a golf tournament to raise money for scholarships. Last year's tournament netted nearly \$10,000 for students through the generous support of one-hundred fifty golfers, seventeen major sponsors, numerous door prize sponsors, additional contributors, many volunteer workers and Foundation Board members, and the gracious hosting of the tournament by Spring Hill Country Club. This quality event has grown each year.

Other fund-raising and friend-raising activities have included concerts; auctions; ballet and opera performances; spring receptions, desserts, and plays; retirees breakfast; exhibit at

Foundation In Review - continued

the college mall show; offering free seminars on Financial & Estate Planning; and the Monte Carlo events that were successful and popular for several years.

Giving To The Foundation

Gifts to the Foundation may be made in any of several ways. Regardless of how they are made, these gifts support education and at the same time, achieve maximum tax benefits for the donor.

Contributions may be made by gifts of cash, equipment, securities, insurance policies, real or personal property, provisions of a will or establishment of a trust.

Donors may outline specific instructions as to the use of their gifts, or they may leave the administration of their gifts to the discretion of the Foundation Board of Trustees. All funds designated by donors for specific purposes are administered as separate accounts.

All gifts to the LBCC Foundation are an investment in your community's future by building a higher quality of education at Linn-Benton Community College.

Fund-Raising

Following two years of planning, the Foundation positioned itself to conduct its first annual fund drive designed principally to seek undesignated funds to be used as a resource base for a Major Gifts Campaign to follow in 1993. The recently approved Investment Policy will ensure that funds are managed for optimum return while protecting the principal of all donations.

Board Of Trustees

The LBCC Foundation Board of Trustees is composed of persons from Linn and Benton Counties who have expressed an interest and desire to use their leadership and time on behalf of LBCC through its Foundation.

The members of this board serve without compensation and are responsible for the management of all properties and/or monies conveyed to the Foundation.

We will be happy to provide additional information about the Foundation. Please feel welcome to contact us.

The Foundation Investment Policy

The Finance Steering Committee of the Foundation chaired by Dick Hendricks, CPA from Corvallis, has focused its efforts in 1992 on the development of a comprehensive investment policy for the Foundation.

The preamble and objectives of the Investment Policy summarize its purpose:

Preamble

The Linn-Benton Community College Foundation exists for the express purpose of advancing and promoting the interests and development of Linn-Benton Community College and the students, faculty, and community. The Foundation provides a means for supporting projects and programs which are beyond the scope of the college. The Foundation Board of Trustees is organized to solicit and accept gifts in support of Linn-Benton Community College and to manage, invest, and account for the assets of the Foundation. Assets will be prudently managed in accordance with donor's directions and with this policy.

Objectives:

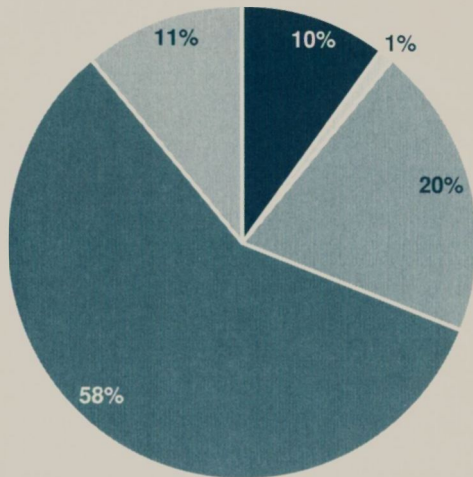
1. The safety of capital is the primary objective in the management of Foundation assets.
2. Assets will be managed with care and caution in a judicious manner.
3. Investments of assets will be made to maximize earnings and growth while adhering to the primary objectives of safety of capital and cautious and judicious management.

Chairman Hendricks is pleased with the results. "When individuals contribute their personal and corporate assets to a non-profit foundation they are interested primarily in two things. First that their money is safe and managed professionally and second that their intent is strictly adhered to. I think that the new investment policy that the Board has adopted helps us assure donors that their concerns will be met."

The first annual fund drive was designed principally to seek undesignated funds to be used as a resource base for a Major Gifts Campaign to follow in 1993

Foundation Financial Report For 1991 - 1992

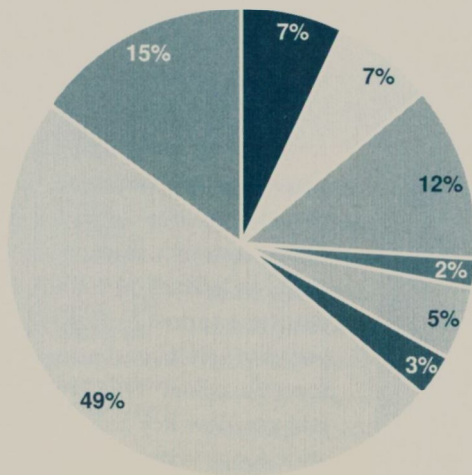
The audit report for 1991/92 is complete and available upon request from the Foundation Office.



Foundation Revenue

Fund-raising (Annual Golf Tournament) and Other Cash Gifts (10%)	\$24,408
Endowment Funds (1%)	3,550
Agency & Restricted Funds (20%)	50,476
Non-Cash Contributions (58%)	145,001
Donated Services (11%)	28,201

Total Revenue \$251,636



Foundation Expenditures

Scholarships (7%)	\$12,294
Agency Expenses (7%)	11,212
Special Purpose Assistance & Other (12%)	22,896
Equipment - Vocational Education (2%)	3,492
Supporting Services (Fundraising) (5%)	9,407
Management, Audit, Legal, Insurance & Taxes (3%)	6,317
Equipment (In Kind) (49%)	89,779
Personal Services (Donated) (15%)	28,201

Total Expenditures \$183,598

Net Gain \$68,038

Balance Sheet

<table border="0" style="width: 100%;"> <tr> <td style="width: 80%;">Cash</td> <td style="text-align: right;">\$116,736</td> </tr> <tr> <td>Real Property</td> <td style="text-align: right;">82,000</td> </tr> <tr> <td>Equipment*</td> <td style="text-align: right;">20,000</td> </tr> <tr> <td colspan="2"><hr style="border-top: 1px dashed black;"/></td> </tr> <tr> <td>Total</td> <td style="text-align: right;">\$218,736</td> </tr> </table>	Cash	\$116,736	Real Property	82,000	Equipment*	20,000	<hr style="border-top: 1px dashed black;"/>		Total	\$218,736	<table border="0" style="width: 100%;"> <tr> <td style="width: 80%;">Agency Accounts</td> <td style="text-align: right;">\$23,535</td> </tr> <tr> <td>Interest In Life Estate</td> <td style="text-align: right;">14,778</td> </tr> <tr> <td>Fund Balance</td> <td style="text-align: right;">180,423</td> </tr> <tr> <td colspan="2"><hr style="border-top: 1px dashed black;"/></td> </tr> <tr> <td>Total</td> <td style="text-align: right;">\$218,736</td> </tr> </table>	Agency Accounts	\$23,535	Interest In Life Estate	14,778	Fund Balance	180,423	<hr style="border-top: 1px dashed black;"/>		Total	\$218,736
Cash	\$116,736																				
Real Property	82,000																				
Equipment*	20,000																				
<hr style="border-top: 1px dashed black;"/>																					
Total	\$218,736																				
Agency Accounts	\$23,535																				
Interest In Life Estate	14,778																				
Fund Balance	180,423																				
<hr style="border-top: 1px dashed black;"/>																					
Total	\$218,736																				

* NOTE: Only grand piano booked; donated equipment transferred to LBCC.

The Annual Fund And Major Gifts Campaigns

Annual Fund Drive Focus

The focus of this year's Annual Fund Drive was not only to raise funds for scholarships, loans, and program enhancement, but also to disseminate information about LBCC and the LBCC Foundation. The public needs to be aware of the very positive impact the college has on the community. In support, the Foundation receives donations and gifts to help the College achieve its mission. Undesignated funds raised through the Annual Drive will help make possible a future major gifts campaign in behalf of the college. The major

gifts campaign in turn will allow significant college improvements.

Kick-off Of Annual Fund Drive

Kick-off of the first Annual Fund Drive was on October 1, 1992. Thirty-five LBCC staff members served as area leaders. Each staff leader was asked to contact approximately ten colleagues. Donations of any size were encouraged. Contributions could either be designated to specific funds or to the general fund. Retired staff, part-time faculty, and College Board of Education members were invited to participate in the campaign.

The Foundation Board was also actively involved in the campaign. Board members were asked to contact select potential donors in the community.

Community and business leaders were invited to participate in the campaign. Letters were mailed to members of Chambers of Commerce in the two county area. Included in this letter was a sticker which could be placed on a business door or window expressing support for LBCC and a request for a donation. This invitation was very low key and the Foundation was very pleased at the level of support shown for the college by the community.



George Kurtz and Sharon Abernathy, LBCC Foundation, meet with Vesta Frum and Lucille Jorgenson who represent the Albany Business Professional Women. The ABPW donated their remaining treasury of \$8,096.31 to the Foundation upon dissolving the Albany chapter. Their gift will fund annual scholarships specifically for women students at LBCC from the greater Albany area.

Donor Recognition Levels

Donations are accepted at any time. Each donation is cumulative toward the recognition levels. The Foundation recognizes all donors with thank you notes, tax receipts for amount donated, and recognition on the major donor plaque in Takena Hall for accumulated gifts of \$500 and more. The following levels of cumulative giving recognize donors at significant thresholds as symbols of Foundation appreciation.

Foundation Builder	Gifts up to \$99
White Oak Round Table	Gifts from \$100 - \$499
Scarlet Oak Round Table	Gifts from \$500 - \$999
Blue Oak Round Table	Gifts from \$1,000 - \$4,999
Evergreen Oak Round Table	Gifts from \$5,000 - \$24,999
Silver Oak Round Table	Gifts from \$25,000 - \$99,999
Golden Oak Round Table	Gifts of \$100,000 or more



Marti Stewart, Executive Director of Resource Development for LBCC, receives a gift of \$1,000 from Keith Larson, Human Resources Manager, (left) and Jeff Manchester, Mill Manager, (right) with James River Corporation in Halsey. The gift from James River Corporation was the largest single corporate gift to the Annual Fund Drive.

Success!

The Foundation is pleased to announce that the Annual Fund Drive easily surpassed its silent goal and raised approximately \$37,500; donations are still arriving daily. One hundred sixty four staff members contributed a total of \$17,729.40. The balance of \$19,770.60 was donated by community individuals or businesses.

Another goal successfully accomplished through the drive was informing LBCC staff members and the community at large about the Foundation and positive impact it makes on our students and programs. Often it is assumed that because the Foundation has been around for 20 years that everyone knows about it. We haven't been letting people know often enough about the Foundation and the Annual Fund Drive was the first of an ongoing effort to keep the Foundation and its purpose before the community.

Recognition

As a small token of appreciation, each donor to the drive received a marble paper-weight with the foundation logo on it as a thank you for the contribution. Other recogni-

tion benefits are being shared according to the level of membership earned by the donor as outlined in the chart on page 5. We have featured photographs of several donors in this report, but we can't express enough our appreciation for each gift, regardless of the size.

Major Gifts Campaign

The theme chosen for the major gifts campaign is *Building Communities*. As the College excitedly picks up the challenge and opportunity of the 90's to positively build the community, the Foundation have set the Building Communities Campaign to kick-off in 1993. The theme gives new emphasis to the challenge of building a better tomorrow for our children, our

grandchildren, and ourselves. It is a partnership based upon shared values and common goals. The Foundation serves as the vehicle to assist Linn-Benton Community College as it helps students toward success, to provide both training and retraining facilities and programs to produce a quality workforce and to enhance the quality of life in our community.

The Future

The Foundation continues to grow as the primary support organization of Linn-Benton Community College -- built on past successes and striving for even higher achievements in support of the college.

A Big Thank You

The goals of education and fund-raising for the Annual Fund Drive have been met, and we look forward to even greater success in the future with the Building Communities Campaign. "A very big THANK YOU to all the Linn-Benton Community College Foundation donors." *Marti Ayers Stewart, Executive Director of Resource Development.*

Donor Recognition

The Linn-Benton Community College Foundation is greatly indebted to all the people who have contributed their time, talent, funds, and equipment to the college to support quality educational opportunities for students of the district.

The Foundation recognizes all donors with thank you notes, tax receipts for amount donated, and recognition on the major plaque in Takena Hall for accumulated gifts of \$500 and more. Following are all donors who have supported the Foundation over its 20 year history. Donor lists were compiled to reflect Foundation giving through December, 1992. Please bring any omissions or errors to the attention of the Foundation/Planning & Development Office.

• A

A2E2 Foundation
 Jim Abbott
 Sharon Abernathy
 Maureen Ableman
 Ace Home Center
 Action Temporary Help Services
 Adobe Motel
 Ann Adams
 Dr. Robert & Nancy Adams
 Advanced Surface & Processing
 Allen F. Agnew
 Tom Ahlers
 Air Products
 Albany Agency of Insurance
 Albany Anesthesia
 Albany Aquatics Association
 Albany Athletic Club
 Albany Business & Professional Women
 Albany Chamber of Commerce
 Albany, City of

Albany Democrat-Herald
 Albany Dental Group
 Albany Downtown Association
 Albany Eye Care
 Albany General Hospital
 Albany Heating Oil
 Albany JayCees Wives
 Albany Kiwanis' Club
 Albany Lebanon Sanitation
 Albany Lion's Club
 Albany Rotary Club
 Albany Swing Band/
 Robert Yocum
 Diane Alexander
 Lauren Allender
 David Allstot
 Alpha Delta Kappa
 Alsea High School Student Body
 Dr. Mercedes Altizer MD
 Altrusa Club of Corvallis
 Altrusa Club of Albany
 Jo Alvin
 John Alvin, Jr.
 Amalco Metals, Inc.

American Association of University Women
 American Legion Auxiliary
 Ampac Seed Company
 Ken Andrews
 Scott Anselm
 Applied Theory/Keith Ledbetter
 Brian & Cheryl Arp
 Artistic Floral/Pat Schaffner
 ASCET (Oregon Chapter)
 Angie Aschoff
 Dan P. & Barbara T. Ashton
 Dan L. & Daisy Ashton
 ASLBCC (ACCF)
 Joyce Attig
 Illa Atwood
 Dr. Cyrus Austin DDS
 Automotive Products Inc./George Lee
 Away Travel
 Peggy Ayres

• B

B & W Shoe Service
 Tommy Badley
 Teddy Bailey
 Lynn Bain
 Malcolm Baker CPA
 Vickie Baker
 Dave Bakley
 Ferne Ballard
 Fred Balton
 Lloyd Banning
 Jeanette Banta
 Barenbrug - Normarc Division
 Clinton Barnard
 James Barnes
 Barrett Bros, Inc.
 John & Pam Barrett
 Dottie Barringer
 Al Barrios
 Alvin John Barrios II
 Edward & Colleen Bartlett, Sr.
 Bauman Lumber (Willamette Industries)
 Curtis & Dorothy Baxter

Gary P. Beck
 Vicki Beck
 Larry Becker
 RW Beckett Corporation
 James Bell
 Milly Bell
 Tom Bell Truck Repair
 Andrew Bellando
 Rosemary Bennett
 W. Benowicz
 Dave Benson
 Benton Center (LBCC)
 Benton County Bank
 Benton County Health Department
 Benton County Republican Women
 Jack Benton
 Cliff & Barbara Berg
 Rich Bergeman
 Dr. Merle Berry
 Art Bervin
 Barbara Bessey
 Larry Bewley
 Laurel Bible
 Bill's Flower Tree
 Bill's Tax Service
 Katherine Bisbee
 Cheryl Black
 Missy Black
 Thelma Black
 Laurie Blacklock
 Fred Blanton
 Stefan Bloomfield
 Pete Bober
 Thomas Bohmker
 Bonanza Limousine Event
 William Bonebrake
 Dr. Benjamin & Heidi Bonnlander
 Lena Bosshart
 C. W. Bottorff
 Dr. R.W. Bourdage
 Virginia Bowler
 Peter Boyse
 Dr. Ben Braat DMV
 Ed & Bev Bradley
 Myrna Branam
 Brand-S Corporation
 Dr. Fred & Mary Brauti
 Janet Brem

William T. Bristow
 (The) Broadway
 Zel Brook/Brad Whiting
 Jay Brooks
 Gregory Buell
 Brian Brown
 Cathy Brown
 David Brown
 Joyce Brown
 Larry Brown
 James Browning
 Brudvig, Baker, Sartain & Johnson CPAs
 Leon Bruer
 Nancy Bryant
 John Buchner
 Bureau of Mines
 C. L. & Ida Burggraf
 Mr. & Mrs. Lural Burggraf
 Patrick Burkett
 John Burrus
 Burton's Oak Tree
 Ray Bushnell
 Shirley Buttenhoff
 Buzz's Refrigeration, Heating, Air Conditioning

• C

Irma Callahan
 Cameron's Restaurant
 Beth Camp
 Dristin Campbell
 Mary Campbell
 Janet Carlson
 Jon Carnahan
 John Carnegie
 Donna Carr
 Antionette Carson
 Cascade Area Council Inc.
 Cascade Corporation
 Casey Industrial Inc.
 Central Engine Machine Co.
 CH2M Hill
 Gordon Chamberlain
 Alexis Chambers
 Doug Chambers
 Henrietta Chambers
 Maynard Chambers

Donor Recognition

- | | | | | |
|---|---|--|--|--|
| Rebecca & Huntress Chambers
Wayne & Joann Chambers
Gwen Chandler
Kay Chapman
Chasko International
Alan L. Cheek
Ken & Vivian Cheney
Patsy Chester
Chevron Matching Gifts
Chevron USA Inc.
Frank Christensen
Chrysler Motors Corporation
Citizen's Bank
Doug Clark
Katherine & Robert Clark
Suzanne Clark
Thomas Clark
Jay Climer
Bill Clotere
Coastal Farm & Home Supply
Roger & Barbara Cochell
Susan Cogan
Arless Collins
Comanche Construction Co.
Comfort Inn in Bend
Gerry Conner
Maurice & Colleen Cook
John & Franceline Cooksey
Dr. Dalton Cooley DDS
Michael Corbitt
Corvallis Art Center
Corvallis Clinic
Corvallis Gazette Times
Covalt Enterprises
Creative Arts Guild
Creative Trends
Creditor's Collection Service
Credo Corporation
Sue Cripe
William & Evalyn Crocker
Myron Cropsey
Jim Crotts
Dale & Betty Curtis & Family | Nichols Cutting CPA

• D
D & D Electronics/
Robert Daly
D-n-D Market
Jack & Suzanne Darley
Emily Daschiell
Data Associates
Data I/O Corporation
Datametric
Charles & Wanda Daugherty
Katherine Davenport
Dr. W. A. Davis
Delbert & Joan Davis
Shirley Davis
DECA (LBCC)
Ted & Dee Deems
Keith Delaney
Cindy Demeyer
Design Etc.
Development Education Staff
Dewald Northwest Co.
Digital Equipment Corporation
Barbara & Paul Dixon
Jim Doherty Construction Co.
Linda Donald
Kirkwood Donavan
Marthajane Doogan
Dr. & Mrs. George Dooley III
Allen Dorfman
Jeanne Dost
Jean S. & Gerald Dotson
Douglas County School District
Douglas Educational Service District
Bill & Betty Dowless
Dean A. Dowless
DPMA Capitol City Chapter
DPMA Student Chapter
Audrey Draper
Duedall-Potts
Jeff DuMont
Pam Dunn
Sgt. Joseph Durham CM
Margi Dusek | • E
Kenneth Earwood
Arletta Eastland
Easton Corporation
Joyce Easton
Economy Supply
Ecru Garment Guild
Mark Edwards
R. H. & Marie Eggers
Dan Ehrlich
Electric Construction Company
Angie & Gerald Elger
Elks Charity Fund
Ian Elliott
Joyce Ellis
Monty & Linda Ellison
Emerson Electric Company
Elm Street Nuclear Imaging
Emmons, Kropp, Kryger, Alexander & Egan Attorneys
Endex Engineering, Inc.
Paula Engel
Alan England
Kelly Esbenshade
ESCO Corporation
John Eskeldson PA
Eugene Beauty Supply
Evanite Fiber Corporation
Austin Evanson
Evashevski & Elliott, PC | FFA of Redmond High School
Fiddler's Green
Fifth Generation System
First Interstate Bank of Oregon Albany Branch
First Interstate Bank of Oregon Charitable Foundation
First Interstate Development Corporation
First National Bank of Oregon
First Round
Kelly Ann Fish
Susan Fish
Fisher Funeral Home, Inc.
Fisher Implement
Ralph Fisher
Dr. David Fitchett
Joanne Fitzgerald
Five Hundred Mile Club
Frank & Carrol Flaherty
Robert L. Folkestad
Forestry Student Association
Michael Foster
Four Corners Champion Feed
Shirley Foust
John Fox
Verl & Edna Mae Fraley
Paul Franklin Chevron
Virgil, Anna May & Levonia Freed
Freedom Federal Savings & Loan
A. L. & Jane French
Nickie Frisch
Fuels Management Support Group
Full Circle
John & Georgia Fulton
Mr. & Mrs. John H. Fulton
Future Secretaries of America/LBCC
FVM Company | Doug Gamet
Richard & Elizabeth Garber
John & Carolyn Gardner
May Garland
Gazette Times
General Mills Inc.
Gensco Inc.
Georgia Pacific
Georgia Pacific - Toledo Division
Larry Giddings
Mary Gilbert
Jack Giles
Barbara Gladstone
Glenwood Manor
Glide Public Schools
Dr. Michael Goger DMD
(The) Gold Exchange
Golf Club of Oregon
Thomas Gonzales
Willis Grafe
Gravagraphics/Bruce Overbeck
Great Western Seed
Kinsey B. Green
Paula Grigsby
Sue Giles Green
Joseph Greene
Terry Greer
Michael Gregory
Russ Gregory
Jackie Grenz
Maxine Grenz
Ann Grieg
Paul Grindel
Al & Kay Guadagnoli
T. E. Gump |
| | | | | • H
Emalie Hadlock
Dr. Ken Haevernick
Dr. Patrick Hagerty DMD
Rachel Hagfeldt
C.G. Hall Trucking Inc.
Darwin Hall
Halton Co.
D. Hammer
Susan Hall
Hank's Concrete Products |
| | | | | • G
Gables Restaurant
Gary & Debra Gaetti
Roger Gaither |

Donor Recognition

Gene Hansen Life Ins.
 Kent Hansen
 Bernadean Hanson
 Vera Harding
 Elaine Harley
 Betty Jane & Daniel Harrington
 Carolyn Harris
 Hart Janitorial Service
 Hartford Steamboiler Inspection
 Gerald Hastings
 Tom & Betts Haswell
 Dr. & Mrs. Ken Havernick
 Greg Hawk
 Mildred Hawkins
 Bob & Sherry Hazelton
 Heart of the Valley
 Kathleen Heath
 Rachel Heister
 Virginia Held
 Mike, JoAnne, Chloe & Hannah Hellberg
 Hasso Hering
 Billie Hemelstrand
 June Hemmingson
 Henderson's Business Machines
 Dick & Lori Hendrick
 Della Hendricks
 Hewlett-Packard
 Howard Hickam
 Leonard Higgins
 Richard Highsmith, Jr.
 Lance Hill
 Lorna Hinck
 Earl & Bernice Hitchcock
 Lois Hobbs
 Elizabeth Hogeland
 Holley Grange No. 325
 Susan Holling
 Floyd & Dorothy Hopeman
 Don Hopper
 Douglas Horn
 Rich Horton
 Dr. R. Michael Houglum
 Hub City Concrete Co.
 Wes Hughitt
 Jerry Hull
 John & Janet Hull

Jack B. Huntress
 Rebecca Chambers Huntress
 Hurco Corporation
 Jan Huskey
• I
 Industrial Systems Technology
 Ingersol-Rand Company
 James & Sara Ingle
 Inkwell
 Insta-Print
 Intel Corporation
 Irwin Publishing
 Wes Itughitt
 IVAC Corporation

• J
 Elmer & Imogene Jack
 Jackson County 4-H/FFA
 Deborah Jackson
 Timothy Jackson
 Vern Jackson
 N.M. Jacobsen Screen Printing
 Jake's Athletic Schopp
 Donna James
 James River Corporation
 Janel Laboratories Inc.
 Fred Jansen
 Mathew Jarvis
 JayCees of Corvallis
 Glenn & Judith Jaquith
 Ray & Pat Jean
 Jefferson 4-H
 Barbara Jenkins
 Karl Jernstedt
 Jewett, Barton, Leavy, & Kern Insurance
 John Deere Company
 Anton & Lyndall Johnson
 Johnson Divison/UOP Inc.
 Jim Johnson Truck Repair
 Barbara J. Johnson
 Johnson Division UOP Inc.
 Geraldine (Louise) Johnson
 Larry & Candace Johnson
 R. F. Johnson & Sons

Taffy Johnson
 Mr. & Mrs. Robert Jones
 Jim & Carol Jordan
 Olivia Jordan
 Leo Judy
 Bill Jury
• K
 K & D Engineering, Inc.
 Kappa Kappa Gamma Alumnae
 Laurie Keebler
 Alan Keith
 Kelley Family Foundation Trust
 Irving Kellogg
 Rich Kellum Welder Repair

Mr. & Mrs. Patrick Kemp
 Kern Insurance
 KFLY/KEJO Radio
 KGAL Radio FM102.3/AM920
 Judith Kieff
 Ray & Lita Kilpatrick
 Ford & Mildred Kimpton
 Hal King
 Kevin King
 Dean Kingsbury
 Kings Road Medical Lab
 Marilyn Kirsch
 Kiwanis Takena Club
 Rick Klampe
 Sharon Klavano
 Carroyl Kleine
 KOK Accounting & Tax Preparation
 Judith Kraft
 Kraus & Dalke Consulting Engineers
 Alice & Daniel Krawczyk
 Wendy Krislen
 Roger Kroening
 Marion & Verda Krug
 Daniel Kuenzi
 Miriam Kuipers
 George Kurtz
 KWIL/KHPE FM Radio

• L
 Lauren, Leanore & Ray La Fond

Ralph Lae
 Dr. R.E. & Hallie Lahti
 Rita Lambert
 Mary Ann Lammers
 Jeffrey Lane
 Larsell Mechanical Service
 Stephen Larson
 Lassen Chevrolet/Toyota
 Tod Lassen
 Karen & Harold Leeson
 Terry Leeson
 LBCC Bookstore
 LBCC Business Division
 LBCC Development Ed Staff
 LBCC Faculty Association
 LBCC International Student Club
 LBCC Students
 Craig & Nancy Leman
 Ed Lemco & Associates
 Chester & Flora Leroy
 Monica Leroy
 Osia Lewis
 Liberty NW Insurance Corporation
 Max Lieberman
 Richard Liebert
 Lincoln County Veterinary Association
 Peggy Lind
 Dr. Richard Linder DMD
 Ling, Green & Associates
 Linn-Benton Tractor
 Earnest Loe
 Ralph Loe
 Rodney Loe
 Steven Long
 Lovegrave Auto Body
 Lovelace Floral
 Mona Luebbert
 Lynn & Barbara Lundquist
 William & Helen Lynn

• M
 Joe Malcolm
 Ann Malosh
 Charlie Mann
 Doyle Marchbanks

Wesley & Carol Marchbanks
 Mario Pastega Pepsi Bottling
 Marion County Teens 4-H Club
 Mark Thomas Motors
 Market Place Pizza
 Marriott Hotel
 G.E. Marshall
 Loy Marshall CPA
 Mike Martin
 MartInvest
 Mary Anna Bakery
 Greg Mason
 Mastertune-Auto
 Caroline E. Matejcek
 Roger Maurer
 Jean May
 James & Betty McCarty
 Dick McClain
 A. L. McCormick
 Terry McCormick
 Joyce McCoy
 Bill McCraw
 Rosemary McCusker
 Virginia McFarlan
 Carol McIntire
 McKenzie Outfitters
 Nancy McLean
 Joanne & Seaton McLennan
 Allen McMahan
 Ken McMilan
 Nancy McMorris
 Mary Lou McPheeters
 Ken & Pamela Mead
 Don Meade
 Mechanical Contractors North
 MESA/Management & Exempt Staff (LBCC)
 Mettek Inc./George Raimer
 Joan Meyer
 Mid-Valley Farms/Dennis Glaser
 Mid-Valley Gravel
 Vern Miebach
 Cecil & Bob Mikkelson
 Robert H. Mikkelson
 Bob & Linda Miller

Donor Recognition

Bryan Miller
 Carolyn Miller
 Hulan Miller
 Naomi Miller
 Ronald Miller
 Ann Mills
 Jack Miner
 Leo Mittag
 James Mohr
 Mollalla Union High School
 Maribel Montgomery
 Dr. Robert G. Moore MD
 Paul & Myra Moore
 Bruce & Zona Moos
 Jack Moran CPA
 C. Genevieve Morgan
 Gerald Morgan
 Morgan's Bicycle Shop
 Frank Morris
 Gretchen Morris
 Linn Morrison
 I.I. Morrow
 Morse Bros.
 Virginia Moskus
 Motorola SPS/University Support
 Dolores & Charles Mouradian
 Moxie Styling Salon
 Carla Mundt
 Elaine Murphy
 M. Louise Murry
 Bill Myers

• N

Louis M. Nagg
 National Association of Accountants
 National Semiconductor
 John W. Neal
 Ray Needham
 Deborah Neft
 Donna Nelson
 Dorie Nelson
 Linda Nelson
 William T. Nelson
 Gene Neville
 Virginia Newman
 Newman's Shell
 Newport Bay Restaurant

Glenys Nichol
 Betty Nichols
 Scott Nicholson
 NK Lawn & Garden Co.
 Mark Nofziger
 Robert Noll
 George Norek
 Gladys Norman
 Norpac Foods Inc.
 Northwest Natural Gas
 Laverie Norwood
 Mary Nosack
 Novak's Hungarian Paprikas

• O

O'Brien Dental Lab, Inc.
 Lorna O'Guinn
 Don O'Malley
 Daniel & Sharmon O'Neill
 John O'Rourke
 Ronald & Linda Olsen
 Arthur E. Olson
 Katherine & Kenneth Olson
 Omark Industries
 Oregon Fish & Wildlife Department
 Oregon Freeze Dry
 Oregon Girl
 Oregon Industrial Contractors
 Oregon Junior Angus Association
 Oregon Metallurgical Corporation
 Oregon Originals
 Margaret Orsi
 OSEA Chapter 151
 Ted Osgood
 Blair Osterlund
 OSU Book Stores Walnut Warehouse Staff
 OSU Folk Club Thrift Shop
 OSU Foundation
 Calvin Otta

• P

Brenda Pace
 Pacific International Livestock Expo

Pacific Mainline
 Pacific NW Personnel Managers
 Pacific NW Civitan District
 Pacific NW Pollution Control
 Pacific Power & Light
 Erna Packard
 Dr. Patricia Parker DDS
 Dorothy Parpart
 Hazel Parsons
 Betsy Parrent
 Mike Patrick
 Teresa Patterson
 Greg & Carol Paulson
 Jackie Paulson
 Payless Corvallis Drug Store/Bill Mundt
 Liz Pearce-Smith
 John & Sylvia Pearson
 PEO Chapter FA
 PEO Chapter EP
 Cathy Perry
 Joann & Frank Perry
 Deanna Peters
 John M. Peters
 John Peters
 David E. Peterson
 Dr. Janet Peterson DMD
 Loretta G. Petty
 Oliver Petty
 Annie Phelps
 David Phelps
 Phil Small's Mens Store
 Brian Phillips
 Judy Phillips
 Pickseed West Inc.
 Linda Pillsbury
 Ed Plannmuller
 Dr. Leslie Pliskin
 Pope & Talbot
 Lance Popoff
 Portland Electric & Plumbing
 Dr. Rita Kirk Powell
 Power Transmission Products
 Price, Koontz & Davies CPAs
 Printing Department Staff (LBCC)

Paul Pritchard
 Production Tool & Die
 Professional Secretaries International
 Marlene Propst
 PTI Communications
 Myron Pursley
 Roxie Putnam
 Puyallup Valley Civitan Club

• Q

Quality Machine Parts
 Bob Quinn

• R

Rainbow Color Lab/Dwane Marshall
 Ralph Scariano of Edward D. Jones & Co.
 Howard Ramey
 Lou, June & Jennifer Ramus
 Steve & Margaret Rasmussen
 Elgin Rau
 Don & Betty Rea
 Rick Rebel
 Red Carpet Real Estate
 Redmond Veterinary Clinic
 Wally Reed
 Ralph Reid, Jr.
 Republic Development Company
 Isabel Rex
 Mary Sue Reynolds
 Dr. Neil F. Reynolds DMD
 Rice Heating
 Dave Richards
 Patricia Rickard
 Dr. J. A. Ringler DMD
 Riverside Hogan District
 Wayne Robbins
 Randall Robertson
 Patricia Robidart
 Leonard Roche
 Edna Rogers
 Rogue River School District
 Jorry Rolfe
 Bob Ross

Charlie Ross
 Emogene Ross
 Robert A. & Judy Ross
 Ruth Madsen Ross
 Roths IGA
 Round-up Electronics
 Mr. & Mrs. Stanley Ruckman
 Marguerite S. Rudd
 Dick Running CPA
 Catherine & Floyd Runyan
 S. Doyne Ruppert
 Evonne Rutherford

• S

Saboe Chiropractic Clinic
 Christina Salter
 Janice Samish
 Gregory Sanders
 Vernon Sanders
 Ellen H. Sands
 Eldon & Lucy Schaffer
 Connie Schaffer
 Philip & Nancy Schary
 Barry Scheel
 Colette Scheele
 Henry Schien Inc.
 Mr. & Mrs. Lee Scholsser
 Dave Schmidt
 Loren & Diane Schrock
 Gretchen Schuette
 Larry Schuetz
 Don Schultz
 Richard Schwartz CPA
 Jackie Schweitzer
 Louis Schwindt
 Scio School District #95-C
 Pete Scott
 Scravel Hill Sew & Chat Club
 Sears Roebuck & Co.
 Seaside Chamber of Commerce
 Donna Selig
 Selmet Inc. Rem Products Division
 Dr. W. Scott Serrill MD
 Seven-up Bottling of Salem
 Connie Shaffer

Donor Recognition

Shanico Inn
 Sherry Shawe
 Shelton-Turnbull Printers
 Susan Sheythe
 Charlotte & Raymond Shike
 Kevin Shilts
 Showcase Publications
 Sids Furniture
 Bill Siebler
 Simpson Timber Co.
 Lester Sitton
 Skagit Valley
 Mark & Shirley Skinner
 L. L. Slate
 Mrs. Mack Slate, Jr.
 William Kent Slate
 Bill & Ann Smart
 Ann Smith
 Charlotte Sue Smith
 Frank Smith
 Janet Smith-Scott
 Linda Varsell Smith
 Smokecraft
 Snooky's Downtown
 John Snyder
 Paul Snyder
 David & Patricia Sorem
 John Soriano
 June Sorseth
 Jim Soukup
 South Santiam Education & Project Research
 Southern Willamette Dental
 Mary Spilde
 Spring Hill Country Club
 Molly Staats
 Richard Stach
 Dan Staggs
 Patty Standage
 Celia Staples
 Bond Starker
 State Federal Savings & Loan Association
 Warren & Maryanne Staton
 Stayton Heating
 Stayton Refrigeration
 Lorraine Steele
 Roger Steinmete

Karla Stewart
 Marti Ayers Stewart
 Jerri Stinson
 Stone Forest Industries
 Elaine & Benjamin Stout
 Lawrence Stover
 Dottie Stutzman
 Christopher Suhr
 Larry Sult
 Sunset Fuel Co.
 Supra Corporation
 Tiah Swanson
 Kay Sweet
 Doug & Bobbie Sweetland
 Katie Swett
 Robin Sword
 Systems & Computer Tech Corporation

• T

Tish Tack
 Bob Talbott
 John & Ruth Talbott
 Adah N. Taylor
 Darrell Tedisch
 Tektronix
 Teledyne Wah Chang
 Roxanne Tery
 Clarice Tetz
 Teresa Thomas
 Orval Thompson
 Marjorie Thurber
 Carla & Ron Thurlow
 TiLine, Inc./Jack Byrne
 Mr. & Mrs. Larry Tilley
 Timber By-Products
 Timberhill Athletic Club
 Timberland-McCullough, Inc.
 James Tolbert
 Dennis Tomlinson
 Town & Country Realty
 Tom Bell Truck Repair
 Irene Trappe
 Dale Trautman
 W. Sue Trautwein
 Lynn Trimpe
 Tripp & Tripp Realty
 Randy Tripp
 Russ Tripp

Laurie Trombley
 Carol Trueba
 Jerri Tubbs
 Frank Tucker
 Patricia Tunnell
 Jane Turley
 Judith Turner
 Cliff & JoAnne Trow

• U

David Ullman
 Mildred Underwood Estate/Harold & Joann Brandtner
 United Presbyterian Church
 United Telephone Marketing Department
 United Steel Workers of America
 US National Bank
 USAF 36th Tactical Wing

• V

Valley Appliance & TV
 Valley Cruise & Travel Service
 Valley Pacific
 Andrew Vanderplaat
 Mike & Susan VanLaere
 Douglas Van Pelt
 Tim VanSlyke
 Antone & Louise Van Vliet
 Annette Vedder
 Velvet Touch Candies
 C. Vierra
 Vitus Electric Supply Co.
 Oscar & Margaret Voegelé
 Linda Vosgien
 VWR Scientific

• W

Dr. Ralph & Betty Wade
 Beatrice & Jerome Wagner
 Mona Waibel
 Al Walczak
 Julie Walker
 Jim Wallace

Mike Ward
 Teresa Ware
 Warner, Price, Koontz & Co. CPAs
 Water Quality Lab
 Water Quality Analysts Section
 Diane Watson
 J. K. & Margaret Weatherford
 J. D. Weaver DMD
 L. B. Webb
 Bobbie Weber
 Peggy Weems
 Rosie Weidmann
 Dr. Steven Weintraub DMD
 Mark Weiss
 Michael Weiss
 Irene Wells
 Judi Wells
 J. & J. Werkstadt
 Dr. Dennis Wessels MD
 West Albany BP Service
 Viola West

Becky Westberry
 Westbrook's Restaurant
 Western Turbo/Jim Nash
 Charlie Weyant
 Whirlwind Press
 Ida Mae White
 Jane White
 Joan White
 Dr. Robert & Mrs. Hiliary White
 Loydine Whitehead
 White's Electronics
 Bradford Whiting
 Jay Widmer
 Dave Wienecke
 Ellen Wilkey
 Willamette Auto Service
 Willamette Industries
 Willamette Seed Co.
 Willamette Veterinary Clinic
 Llewlyn & Nina Williams
 Kenneth & Linda Williamson
 Robin Willie
 Glen E. Willis

Helen M. Wilson
 Robert & Joan Wimmer
 Wine Depot
 Kathy Winkenwerder
 Gail Wise
 Karl Wise
 Tom & Mariol Wogaman
 John W. Wolfe
 Patricia Wolff
 Susan Wolff
 Women of the Moose Corvallis Chapter 136
 Women's Club
 Wood Castle Fine Furniture
 Wood Castle Forest Products
 Marylee Wright
 Ralph W.G. Wyckoff

• X

X-Ray Products Corporation

• Y

Cynthia Yee
 Donald Yih
 Mae Yih
 YMCA/Lee Graff
 Ralph & Elsie Younce
 Todd Young
 Kitson & Mabel Yu

• Z

Zertech
 Sandra Zimmer
 Helen Zolsky
 Zonta Club of Corvallis

In 1991 & 1992 funds were given in memory of:

Jonathan Wright
 Dan Ashton
 Odess Emerson
 David Jordan

Reasons To Give



Jon Carnahan, President of LBCC, (left) and George Kurtz, Executive Director of the Foundation, (right) give lapel pins to Margaret and Steve Rasmussen in appreciation for their gift of real estate to the Foundation. This gift will appreciate to be one of the largest single contributions to the Foundation. The endowment from the gift will provide scholarship benefits to students at LBCC where Steve has taught in the sciences since 1971.

Gifts, Bequests and Donations

The Foundation receives private gifts, bequests, and donations in behalf of the college; it manages, invests, and accounts for these resources. Gifts to the Foundation may be made in any of several ways to support education and at the same time to achieve maximum tax benefits for the donor. Gifts may be made for specific purposes or without restrictions. Contributions may be in the form of:

1. Cash
2. Equipment
3. Securities
4. Insurance policies
5. Provisions of a will
6. Establishment of a trust
7. Real or personal property

Programs and Activities

Supported programs and activities include but are not limited to:

1. Providing scholarships and other financial aid for students
2. Enhancing the college library and other teaching resources
3. Buying instructional equipment
4. Supporting curriculum development and excellence
5. Funding of major new campus instructional facilities
6. Supporting community service efforts



We will be happy to provide additional information about the exciting opportunities available through the Foundation. Please contact the:

Executive Director

Linn-Benton Community College Foundation

6500 Pacific Boulevard S. W., Albany, Oregon 97321

Telephone: (503) 967-6100