

The



Commuter

President Welcomes New Students

By RAMOND J. NEEDHAM
President of Linn-Benton Community College



I would like to take this opportunity to welcome both students new to the campus of Linn-Benton Community College and those returning from last year. I believe the 1971-72 school year will be our most active year in the short history of LBCC for we are involved in many programs which have an importance to the college's continued growth, such as the accreditation process; construction of the new campus; development of new curriculum, and the increase of student body by approximately 30 per cent this year.

There are many indications that LBCC is a student-oriented school which is sincerely concerned about learning. I am of the opinion that the reason we exist as a community college is to provide a meaningful education for the students attending LBCC.

The name "community college" should have a great deal of meaning to all of us in that the word "community" indicates that we are an integral part of the total community of Linn and Benton Counties. I hope we have a true concern for the community in which we live, and the community which finances our educational programs. Also, the "college community" should be one where students, faculty, administrators and community all have a part in determining directions of our school for the future.

I would like to encourage students to become involved in their school. In the past we have cooperated with students in developing a committee structure where students can become involved in the development of policies from which the college will operate.

I believe LBCC has hired a staff that truly serves students. We have hired experts in many various fields and I am confident we have obtained the very best staff possible. We think our staff has varying points of view, and you can find many different types of expertise among the staff members.

I realize we are still living in temporary facilities and these facilities will be crowded this school year. We still will not have ample parking space although we do feel it is an improvement over last year.

Students will be able to witness construction of the new campus site occurring during this academic year. Students are welcome to view the construction, although I would caution that safety regulations require persons entering the construction site to wear a hard hat. These are available through the Deans' offices. The construction project that is underway is approximately a ten million dollar project. We hope to have some of our classes moved into the site in the fall of 1972 and the remaining in approximately January 1973. There will be 280,000 square feet of space that will be provided in the new building. It is to be a concrete and brick structure.

Another area I would like to mention is accreditation. We are presently in the process of a Self-Study. We plan to include students on the various accrediting teams. Accreditation gives us a chance to take a look at our institution and analyze and appraise our educational process.

A comprehensive community college includes many kinds of instructional programs. I hope you will feel free to explore and to look at the various kinds of programs and consider what program is best suited for your particular needs. We hope that through our counseling and advising services we can help you decide on a program that develops your potential to the greatest ability.

The students that are enrolled and take an active part in the first initial years of LBCC will have an effect on what happens in future years at LBCC. I sincerely hope the students become involved in the development of our new college for I think we have an opportunity to develop the best community college in the State of Oregon, here at LBCC.

I would like to extend greetings to each student for this year, and would like to invite you to work with us and plan with us for a better college. I hope I have the chance of meeting a large number of students during this academic year.

Scott Greets Fellow Students

By HARVEY M. SCOTT
Student Body President

On behalf of student government, I welcome all new and returning students to Linn-Benton. For those of you who have attended LBCC before, you will note many improvements that have been added over the summer. For those of you who are new, I hope that you join with the pioneering spirit that has helped develop Linn-Benton.

As Student Body President, I have traveled extensively throughout the state to view the other community colleges in action. I sincerely feel that we are attending the most diversified and student oriented community college in Oregon. One thing I hope each of you will remember, especially the new students, that most of your instructors are interested in you. If you should have any problems, take them to the instructor before they mushroom to the point of failing your class or losing interest in the course.

The Student Government offices are open between 8:00 a.m. and 5:00 p.m. We are going to work on a schedule for evening hours. We do maintain an open door policy in the Student Government Offices. Again, if you have any questions or problems, please feel free to ask any person associated with your student government. I am sure any of us would go to great lengths to help you.

Again, welcome aboard and I truly hope that your education and experiences here at LBCC are profitable.



EDITORIAL

You are now holding in your hands probably the most valuable reading matter available to a Linn-Benton student. It has the unfortunate motif of a school newspaper which most people find boring and uninformative.

However, THE COMMUTER is essential to the active student. All the details of sports events, dances, concerts, and convocations are announced in THE COMMUTER.

Students who feel an injustice is being perpetrated can write a letter to be published in the Tail Feathers section. All letters received are printed and space is available for letters with an opposing view.

The staff members of THE COMMUTER are offered a staff column to vent their opinions. One staff member of last year's COMMUTER staff wrote a staff column that led to the revision of LBCC's registration procedures.

THE COMMUTER also offers you, the student, a direct line to the political workings of Student Government.

All senate activities and elections will be covered fully for the benefit of those who vote — and that's you, again.

This year THE COMMUTER plans to run ads that will directly benefit LBCC students, ads that will provide information as to where to get what you need.

THE COMMUTER staff also hopes to publish a weekly instead of a bi-weekly paper. This will be a gradual process and will depend on several conditions. However, until the paper is readjusted to a weekly schedule, there will be special issues planned to supplement the regular bi-weekly issues during special events.

Effective communication is necessary, in fact essential, for a school to grow and prosper. THE COMMUTER will provide a full time relay system between you, the student, your administration, your Student Government, and your fellow students.

You are the final and most important link. By reading and contributing to THE COMMUTER, you are using LBCC's best communicator.

J.H.

THE COMMUTER

THE COMMUTER is a bi-monthly publication of the Associated Students of Linn-Benton Community College and students of Journalism 9.026. Editorial views are expressions of the individual staff writer and do not necessarily reflect the views of either the Associated Students or the Administration of Linn-Benton Community College.

Editor-in-chief
News Editor

Jean Hammel
Chris Broders

Reporters: Ellen Hillemann, Harvey Scott.

Advisor: Ken Cheney

Office hours in T 12 3-4 p.m. daily.

Address correspondence to: Editor, THE COMMUTER, P.O. Box 249, Albany, Oregon 97321.

OCCSA Visits Linn-Benton

LBCC hosted the last Oregon Community Colleges Students' Association Section Meeting before Fall Term on Saturday, August 21. Nine Oregon community colleges were represented.

Delegates from the other campuses began arriving at LBCC Friday evening and were invited to the home of one of our students for a "reacquaintance-get together."

Saturday morning agenda opening with a Convention Planning Committee meeting in the Schafer Lounge. The OCCSA Fall Convention will be held in Ontario, Oregon, October 21 - 24.

Wally Lien, President of the OCCSA, called the general meeting to order at 10:30 a.m.

Linn-Benton was presented with a Recognition of Membership Certificate, as was Treasure Valley Community College.

Schools in attendance were: Central Oregon, Clackamas, Clatsop, Lane, Linn-Benton, Mt. Hood, Southwestern Oregon, Treasure Valley, and Umpqua.

A luncheon in the Lariat Room, at Pop's Branding Iron, closed the event.

The next OCCSA Section Meeting will convene at Umpqua Community College on October 9.

Staff Editorial Column

by Chris Broders

There seems to be some confusion and an equal amount of grievances concerning the COMMUTER's editorial policy pertaining to "Tail Feathers" (Letters to the Editors). Apparently, few people know what our policy is, and a lesser number know the reasons behind our stand.

Simply stated, THE COMMUTER will print any letter to the editor that is signed and that adheres to the Oregon Code of Journalistic Ethics. (This generally pertains to questions of libel or abusive language.)

Any person may request that his name be withheld, but we reserve the right to omit any unsigned letters.

Some argue against this policy. Some feel all names should be printed, that no names should be withheld under any circumstances. Others feel that a school newspaper should be required to print any student's letter, signed or not.

As far as requiring that all names be printed, THE COMMUTER agrees that this would be ideal. Opinions presented usually carry more weight if they are signed, but we do not feel that if a student is reluctant to have his name in print that his viewpoint should be ignored.

If anyone disagrees with any letter or editorial printed in THE COMMUTER, it is a simple matter to write and present another opinion.

As to the printing of unsigned letters, THE COMMUTER must carry the responsibility and so must know who wrote the specific letter in order to show proof should it be requested. If the author is not willing to accept these guidelines, THE COMMUTER is not required to be responsible for the letter in his place.

This policy cannot, of course, please everyone. It is hoped, however, that by following these guidelines, more students will be able to express more opinions more freely.

Note: Letters to the Editor are accepted through Monday of publications week. A limit of one type-written page is requested. We encourage our readers to utilize available space for printing their comment on any worthwhile subject.

.....

Note: Letters to the Editor are accepted through Monday of publications week. A limit of one type-written page is requested. We encourage our readers to utilize available space for printing their comment on any worthwhile subject.

Faculty Column

By Dr. Robert A. Miller

Bob Miller is currently the Director of Student Activities at LBCC. He received a B.S. degree in 1966 from SOC, an M.S. in 1968 from O.S.U., and a Ph.D. from O.S.U. this year. He is married and has a 20 month old son, Sean Erick. His interests include golf, skiing, painting, sculpture, architecture, travel, music and investments.

.....

"The behavior of students today is so disgraceful that I can no longer remain at the University." This quote is not from my many pending letters of resignation but rather the words of Augustine when he resigned from the University of Carthage in 348 A.D. Recently within our society we have witnessed a movement among the students which has driven many men from ivy covered halls on the very premise which drove Augustine from Carthage — student revolt and protest.

I believe that many of my peers perhaps themselves have over reacted to the situation as there certainly exists an intermingling of good and bad motivation in every protest. Each action must thus be evaluated in terms of its goal and the means employed to reach that goal. A peaceful student demonstration in support of "environmental malpractice" is not of the same order as the demonstrating of student opposition to the war by the malicious bombing of ROTC buildings across the nation. Where the goals are distorted or the means destructive, student protest is dangerous; but when the goal is just and the means humane, we find that student protest will, and is, becoming one of the most creative forces in human life today.

This mood is captured by the words of Tennyson which were reiterated in Robert Kennedy's last book:

"The lights begin to twinkle from the rocks;
The long day wanes; the slow moon climbs; the deep
Moans round with many voices. Come my friends,
'Tis not too late to seek a newer world.
Push off, and setting well in order, smite
The surrounding furrows, for my purpose holds
To sail beyond the sunset, and the baths
Of all the Western stars, until I die."

The goal for us is the newer world and I personally feel that we are now in the process of approaching a more realistic and humane means toward that goal.

Former Warden To Address Students

Clinton Duffy, former warden at San Quentin Prison, will present a convocation in the Student Center, October 11, at 10 a.m. Mr. Duffy, who retired from State Correctional Service March 1, 1962 after 32 years and four months of service, will speak to students on his views of capital punishment. Despite the position he held that forced him to legally execute 88 men and 2 women, Mr. Duffy does not believe in capital punishment. He has spent much of his time writing books about the penal system and speaking before groups, colleges, and before his own co-workers within the penal system. Mr. Duffy is currently the National Consultant and Treasurer for the 7th Step Foundation, Inc. which is geared to work with prisoners about to be released and to assist them on their release in maintaining truth and honesty in the community, and he is the National Chairman and Consultant Advisor, for the Milestone Foundation, Inc., a rehabilitative, remotivation and redirection organization for alcoholics.

Mr. Duffy's talk will outline the methods of execution in the U.S., his reasons why capital

punishment is not only wrong but why it is no effective deterrent to crime, and what other alternative systems are available.

Notice

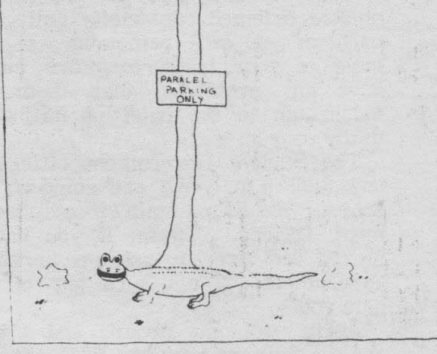
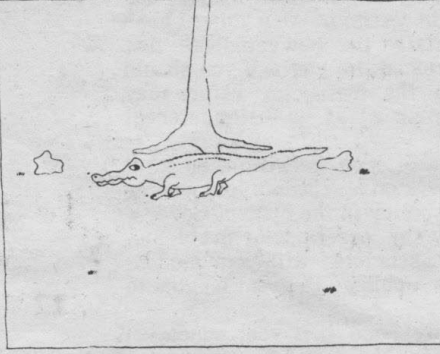
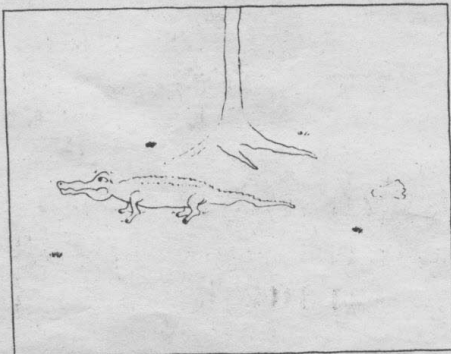
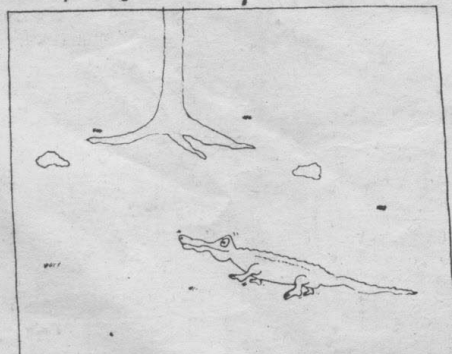
THE COMMUTER is still in need of a Sports Editor and a photographer. The Sports Editor is required to attend or send a reporter to all sports events, write the stories, and set up the sports page for printing. The position pays tuition.

The photographer will be paid according to services rendered. He should be knowledgeable of both a single and double lens reflex camera and the dark-room procedures.

Both positions require that the persons be members of Journalism 9.026 and attend a majority of the class meetings. Anyone interested in applying for the position should contact Mr. Ken Cheney in T 13 or the Editor-in-Chief in T 12 from 3 p.m. to 4 p.m. every day.

The GROUP

by john morgali



Orientation Week Activities Sponsored By Student Gov't

The AS-LBCC Student Government has officially designated the first week of Fall Term 1971 (Sept. 27 — Oct. 1) as Student Orientation Week. New students will be given the option of participating in a more expanded approach to college orientation.

"We hope to acquaint the new students with special events and have planned a variety of things to introduce them to LBCC," said Mary Huber, Second Vice President and Chairman of the AS-LBCC Activities Council.

Mary has taken considerable time in preparing a schedule of events for the Orientation Week.

An Information Booth will be available in the center of the middle mall during the day and evening of Monday through Wednesday for the students' benefit. The booth will be manned by Student Government members and will contain information concerning Student Services, plus maps of the campus, outlines of activities of the coming year, and posted cards for car pools.

Tuesday, September 28, will be designated as Student



Mary Huber
Second Vice President

Government Orientation Service Day. Members of Student Government will be present at 11:00 a.m. in the Student Commons to present informal talks about their roles of representing the student body. The AS-LBCC President will speak on openings for Directors, Freshman Senators, and vacated Executive Council positions.

Activities Council operations and positions available will be stressed by the Second Vice President. The duties and responsibilities of a senator will be discussed by one of the sophomore senators.

The administration will speak to students on the policies of the school, as well as services provided, on Wednesday, September 29, at 1:30 p.m. in the Commons. A member of the counseling staff will be on hand to talk about services available through their department.

"Flicker films" will be shown continuously in the Schafer Lounge on Thursday, September 30. Laurel and Hardy, Mae West, and W. C. Fields will be featured. This event, as is the case with most of the other activities of Student Orientation Week, is of no cost to the students or college personnel.

A free dance, sponsored by AS-LBCC Student Government, will be happening Friday night, October 1, from 8:30-11:30 p.m. Admission is by Student Body Card, with doors opening at 8 p.m. Refreshments will be served. As of this time, the band has not been selected.

Calendar of Events

September 27 — Art Exhibit — Collages by Mark Clarke in College Center foyer until October 22.

September 28 — Student Government Orientation Service Day — Members of student government will be in Student Center at 11:00 a.m. to give talks on their roles in representing the student body.

September 29 — Counseling staff will be in Student Center at 1:30 p.m. as well as members of the administration to discuss policies and services available.

September 29 — Intramural Football — Meeting in Schafer Lounge at 4 p.m.

September 30 — Films — Laurel and Hardy, Mae West, and W.C. Fields will be featured in Schafer Lounge continuously.

September 30 — OSU Convocation — Justice W. M. Douglas at 8:00 p.m. in Gill Coliseum.

October 1 — Dance — Free dance, sponsored by AS-LBCC Student Government, from 8:30 - 11:30 p.m.

October 3 — OSU Concert — Association at 8 p.m. in Gill Coliseum.

October 7 — Coffee Concert — Richard West to sing and accompany himself on guitar in LBCC Student Center at 8 p.m.

October 11 — Convocation — Clinton Duffy in LBCC Student Center at 10:00 a.m.

October 14 — Film — "The Kettles in the Ozarks," continuous showing.

October 16 — Football — OSU vs Arizona State at 8 p.m., in Portland Civic Stadium.

What the Veteran Can Expect From the G.I. Bill

It is hoped that all qualified Veterans have by this time made application for their G.I. Benefits. (That is, those veterans with at least 181 days of continuous active duty, any part of which was after January 31, 1955.) If discharged for a service connected disability, the minimum days (181) of service do not apply.

Assuming this application has been made, the veteran will after applying, in about a month to six weeks, receive a certificate of eligibility which must be turned in to the school registrars office for their certification. After certification by the school to the V.A., the veteran can expect about six weeks before receipt of the first allowance check.

There are several factors that affect the issuance of these checks, the prevalent ones being:

1. Change of address resulting in a check being returned to the V.A. which, if the V.A. has not received notification of change, will result in all checks being stopped. This means another six weeks delay in getting the checks started again.

2. Change of course load, mainly dropping a class which changes status from say, full time to three quarter time, again a delay is generated.

3. Failure to read everything received from the Veterans Administration and comply with instructions.

At the end of the Spring Term an I.B.M. Card is sent with each check received at the first of May for April's allowance. The next check is not issued until about three weeks after this card is returned to the V.A.

The above applies to all veterans pursuing a course of study leading to a standard degree, Associate Degree or higher.

Those students pursuing a

certificate program will receive an I.B.M. Card monthly with the next issuance of a check depending upon the receipt of that card by the V.A.

If in doubt about any aspect of the Veterans Administration Educational Assistance Program, the Veteran should contact the County Veterans Service Officer at the County Court House, Phone 926-2885. Generally speaking, the service offered is assistance in

completing forms, and advice as to what action needs to be taken regarding problems with the Veterans Administration.

90 per cent of cases where problems arise with the Educational Assistance Program can be traced to the Veteran failing to comply with instructions in correspondence from the V.A. However, it is apparent that the number of veterans attending school is reaching proportions that the V.A. cannot cope

with and provide benefits without what seems like undue delays. This is due to the number of cases handled, lack of personnel at the V.A., and procedures required by law.

In order for the Veterans Service Office to provide service in a proper manner, the veteran should allow sufficient time for the V.A. to take action, as inquiries slow down processing of any

claim. Ordinarily three to six weeks is required for any action to be completed. After initial checks have been received, the monthly checks should arrive between the 5th and 13th of each month.

Complaints about the V.A. are properly directed to your congressional representative. If you believe the system should be changed, offer constructive criticism to your congressmen and senators.

PANTS TAKE OVER THE CAMPUS

Pants' power. Hot on the trail to cause a sensational uprising. See 'em all in our super selection soon.

Shop our new arrivals
Blazer jackets
Hot pants sets
Capris
Service style slacks
Co-ordinate blouses

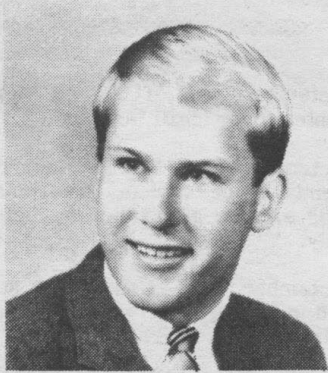
Graves

OPEN MON. & FRI.
NITES 'TIL 9
ALBANY, ORE
322 W. 1st - 928-8103

Who's who in student services



LEE ARCHIBALD, Dean Student Personnel Services.



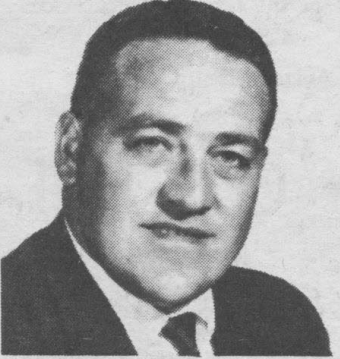
BOB MILLER, Director Student Activities - Student Center.



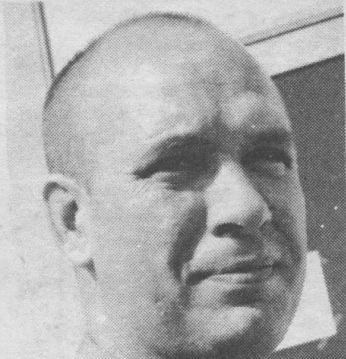
ROBERT TALBOTT, Director Counseling Services.



JANET BREM, Counselor.



RAY MILLER, Counselor.



BLAIR OSTERLUND, Counselor.

Not pictured are the two newly hired counselors, Rita Lambert and Dick Otto. Rita Lambert received her B.A. in Elementary Education from Mt. Angel college in 1965, has taught for several years and held a position as principal in the area of Elementary Education.

She also studied and became a philosophy instructor at Mt. Angel for three years. She taught at Hillcrest School for Girls for one year. At present she is in her second year of a Masters program in College Student Personnel Administration at O.S.U.

Dick Otto received his B.S. in Education in 1968 from O.S.U. and taught for two years at Seaside High School. Then he went on to earn his masters in Education, also from O.S.U. While studying for his masters, he spent two terms of practicum at LBCC last year.

Summer Brings Improvements

With the summer came many changes around the Linn-Benton campus. These improvements range anywhere from a College Center Mall to a newly paved parking lot.

Late Spring Term, a student project to create a "College Center Mall" along the south side of the College Center, was embarked upon. The plans called for a lawn, some shrubs and a few benches. The lawn was planted in late June and the shrubs were placed just this last week.

Twelve benches have been placed about the campus affording places for students and faculty to sit in the sun or the shade. This project was under the direction of Dan Sorenson and Scott Davis. The work on the benches was finished in early August after many delays due to the inclement weather of the early summer. Harvey Scott, Student Body President, said, "The rustic design was chosen over others because we felt these benches would offset the sterile appearance of the campus." Plans call for shrubs and trees to be planted later near the benches up and down the Mall area.

Another student project, directed by Harvey Scott, was the task of securing a flag pole for the College Center Mall. Flags were donated to the student body last spring by Senators Hector Macpherson and Bob Packwood. After these flags had been secured, the student body had no flag pole to fly them from. A local newspaper ran an article to this effect and several firms in the Albany area offered to assist with the project. These firms were Linn Pacific Inc., Pacific Power and Light, and the American Legion Post No. 10, all of Albany. A formal dedication of the flag pole and the hoisting of Linn-Benton's first flags will be held in the College Center Mall Thursday, September 30th, at 2:00 p.m.



A Pacific Power and Light employee watches closely as a company machine drills a 7-foot hole for LBCC's flagpole.

All students and faculty members are invited to attend. Senator Macpherson will dedicate the pole to the citizens of our district.

The most noticeable improvement and perhaps the most appreciated by the returning students is the newly paved parking facilities. The lots are arranged to function with a one way traffic pattern. Persons driving an automobile should enter the entrance closest to Highway 99 W and exit by the exit at the back of

the school. Not all signs are in place at this time, but will be shortly. The simple rule is, all traffic moves to the left.

The campus has expanded with the arrival of seven new single wide trailers. These new trailers will provide office space for faculty and some class room space. The room identification codes for these trailers are designated by the letter "T" and then the number.

Chubby's Corner in the College Center has been expanded. This student and faculty service provides sandwiches, salads, and an assortment of chips for those who wish to buy them during the lunch hours. The Corner is operated by students from the business class here at Linn-Benton.

Linn-Benton students have been attending classes on this temporary site for one year. The college has grown from the days of chemical toilets, no running water, and no electricity in many of the rooms to an institution now providing an education for nearly 4,000 students. We have had, this past year, a nationally recognized baseball team, and have expanded the curriculum to include music and auto-body-fender repair classes. We now have a flag pole, a lawn, and a small forest outside the College Center.



Pictured is LBCC's new flagpole fitted snugly in its newly dug station as Hub City Concrete pours the securing cement.

Art Work On Display

COLLAGES BY MARK CLARKE, an exhibition of new and exciting paper collages will be on display at Linn-Benton Community College, September 27 through October 22, 1971. Mr. Clarke, Assistant Director (for Exhibitions) of the Museum of Art at the University of Oregon is presently on tour of Europe for a year.

Mr. Mark Clarke is presently He has shown his own painting and sculpture in numerous regional and national exhibitions. His entry presented for the Pre-Pak Award Competition-70 won one of the \$1000 prizes. A series of 20 paper collages on one-quarter-inch masonite panels, with different pieces of cut and torn papers fused together with acrylic polymer medium and painted, constitute the colorful outcome offered to Statewide Services for circulation. The compositions were made directly on the support.

This exhibition is brought to Albany by the Statewide Art Services of the Museum of Art, University of Oregon, and is being coordinated locally by Mr. Robert Miller.



Above, Ellen Hillemann and Ed Kelley work together to plant trees and shrubs around the campus mall area. More trees and wild plants will be planted to complete the rustic motif in the mall.

*Brilliant
Beauty*



**CHOOSE FROM THE
WILLAMETTE VALLEY'S
LARGEST SELECTION**

Up To One Year
Divided Payments
No Interest
or Carrying Charges

BRIDAL SETS
Priced From \$100.00 **Annual Interest Rate: None**

MEMBER AMERICAN GEM SOCIETY
CERTIFIED GEMOLOGIST

French's

ALBANY'S JEWELERS SINCE 1879
326 W. FIRST 926-8855